

Barcode label printing

Added: Version 4.01

You might want to print barcode labels for your stock if an existing label is damaged, if you break a box down into smaller pack sizes and the contents don't have individual GS1 barcodes or if some stock comes into your warehouses and it doesn't have valid GS1 barcodes on it.

mSupply prints barcode labels onto stocky labels using a label printer. Before you try to print any barcode labels you must setup your printer. See for [Label printing preferences](#) details.

There are several places in mSupply where you can print barcode labels for your stock.

Item details page

You can print out the barcode labels for a single line at a time. Select the line you want to print the labels for then click on the *Print barcode labels* button:

Item details...

General
Misc
Usage
Stock
Ledger
Quotes
Backorders
Notes
Reconcile
Bill of materials
Purchase Orders
Order options
Dispensing
Reporting
Log
Requisitions
Stores
Barcodes

Item name: Test item 02
Item code: test02
Store: General

Show zero lines Print Split Update sell prices Show related invoices Consolidate Labels **Print barcode labels**

Line	Available packs	Total packs	Hold	Pack size	Batch	Expiry date	Supplier	Manufacturer	Location	Cost Price	Sell Price	Status	Tot...
1	1998	1998	<input type="checkbox"/>	1	uiopo6...	31/01/2020	testsup...		b1	0.00	0.00		0
2	3000	3000	<input type="checkbox"/>	2	zxcv67	30/04/2023	testsup...		a2	0.00	0.00		0
3	200000	2000...	<input type="checkbox"/>	1	cvbrv...	30/04/2024	testsup...			0.06	0.06		0

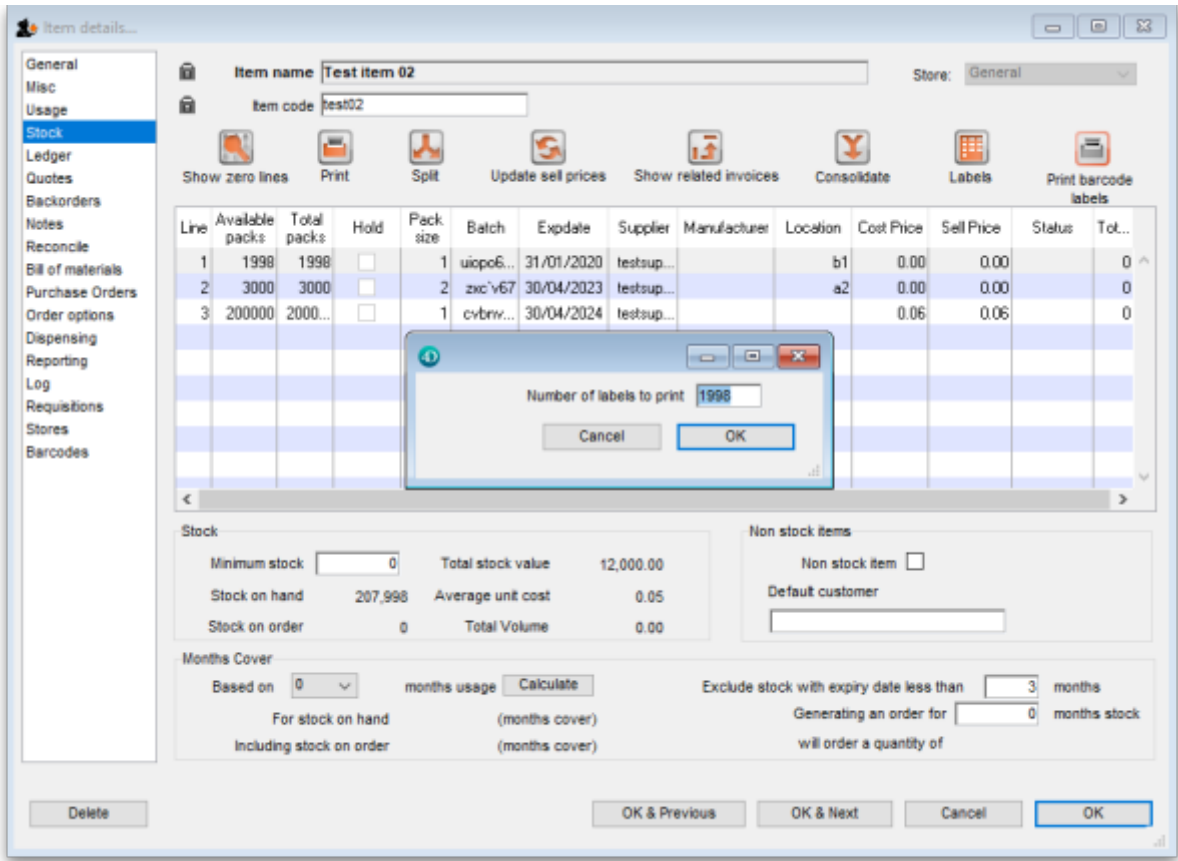
Stock
Minimum stock: 0
Stock on hand: 207,998
Stock on order: 0
Total stock value: 12,000.00
Average unit cost: 0.05
Total Volume: 0.00

Non stock items
Non stock item: ☐
Default customer:

Months Cover
Based on: 0 months usage
Calculate
For stock on hand (months cover)
Including stock on order (months cover)
Exclude stock with expiry date less than: 3 months
Generating an order for: 0 months stock
will order a quantity of:

Delete OK & Previous OK & Next Cancel OK

mSupply will offer to print a label for each pack in the selected line by default:



You can edit the number to something else if you wish. When you click on the **OK** button, the entered number of labels will be printed from your label printer.

Supplier invoice

When the preference to use barcode scanners is turned on, a supplier invoice has a *Print barcode labels* button:

Supplier invoice

Name: Test supplier 01
Their ref: testsup01
Comment:
Confirm date: 00/00/00
Category: None
Colour: Black
Invoice number: 0
Entry date: 28/01/2019
Status: nw
Goods received ID: 0
Purchase Order ID: 0
Entered by: user 1 (pass=
Store: General

New line Delete line **Print barcode labels**

L...	Lo...	Item Name	Qty	Pack	Batch	Expiry	Cost Price	Sell Price	Price extension

Other charges

Item(s):
Amount: 0.00

Subtotal: 0.00
0 % tax: 0.00
Total: 0.00

☐ Hold
☐ Finalise

Export batch: 0
Margin: 0.00

OK & Next Delete OK

After adding lines to the supplier invoice you can print barcode labels for them. If you select a single line then click the button, mSupply will by default offer to print a label for each pack in the line:

The screenshot shows the 'Supplier invoice' window in mSupply. At the top, there are fields for 'Name' (Test supplier 01), 'Their ref' (testsup01), 'Comment', 'Confirm date' (00/00/00), 'Category' (None), 'Colour' (Black), 'Invoice number' (4), 'Entry date' (28/01/2019), 'Status' (nw), 'Goods received ID' (0), 'Purchase Order ID' (0), 'Entered by' (user 1), and 'Store' (General). Below these are buttons for 'New line', 'Delete line', and 'Print barcode labels'. A modal dialog box is open in the center, titled 'Number of labels to print', with a text input field containing '1000' and 'OK' and 'Cancel' buttons. The background table shows two items: 'test item 01' (Qty 1000, Pack 1, Batch asd, Expiry 31/05/2021, Cost Price 0.01, Sell Price 0.01, Price extension 10.00) and 'Test item 03' (Qty 3.00, Pack 1, Batch asd, Expiry 31/05/2021, Cost Price 0.01, Sell Price 3.00, Price extension 90.00). At the bottom, there are 'Other charges' fields, a 'Subtotal' of 100.00, '0 % tax' of 0.00, and a 'Total' of 100.00. There are also checkboxes for 'Hold' and 'Finalise', and buttons for 'OK & Next', 'Delete', and 'OK'.

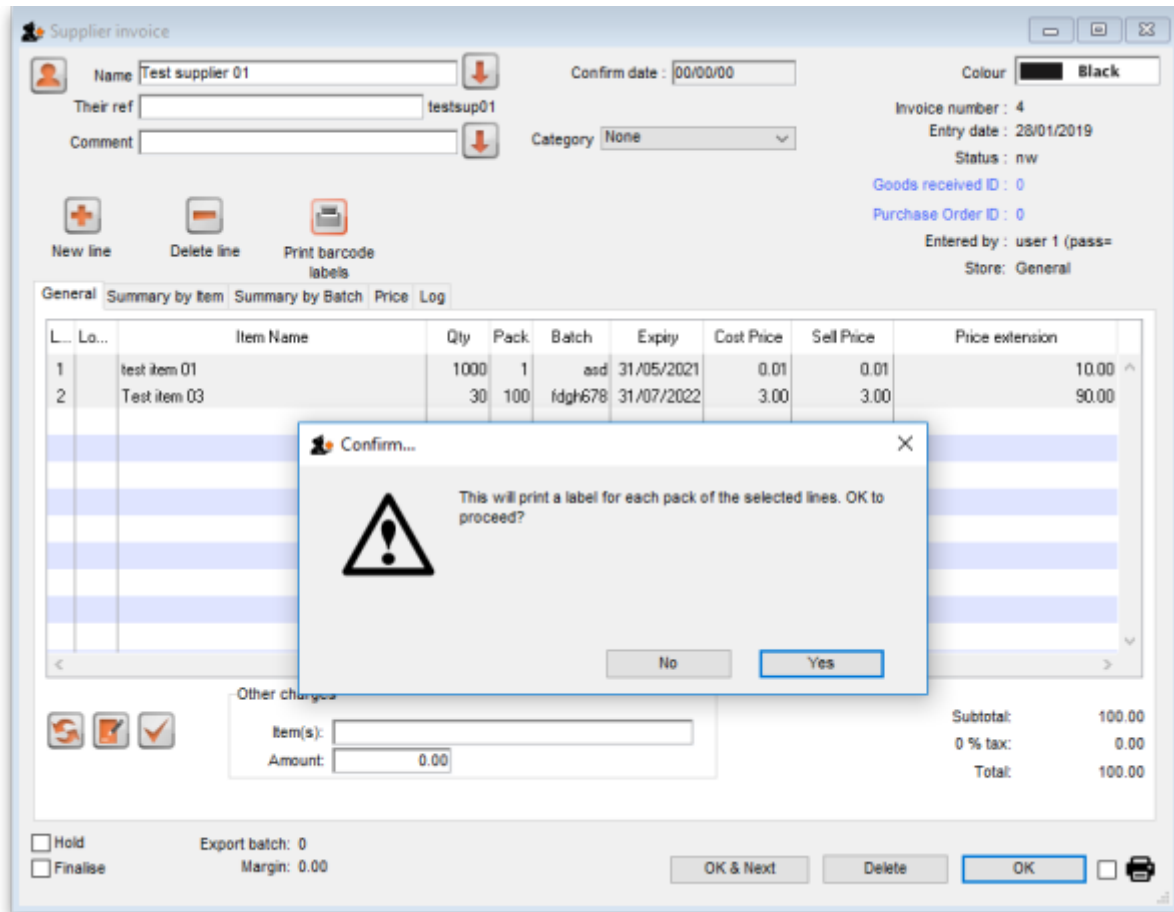
L...	Lo...	Item Name	Qty	Pack	Batch	Expiry	Cost Price	Sell Price	Price extension
1		test item 01	1000	1	asd	31/05/2021	0.01	0.01	10.00
2		Test item 03	3.00	1	asd	31/05/2021	0.01	3.00	90.00

Other charges	
Item(s):	
Amount:	0.00

Summary	
Subtotal:	100.00
0 % tax:	0.00
Total:	100.00

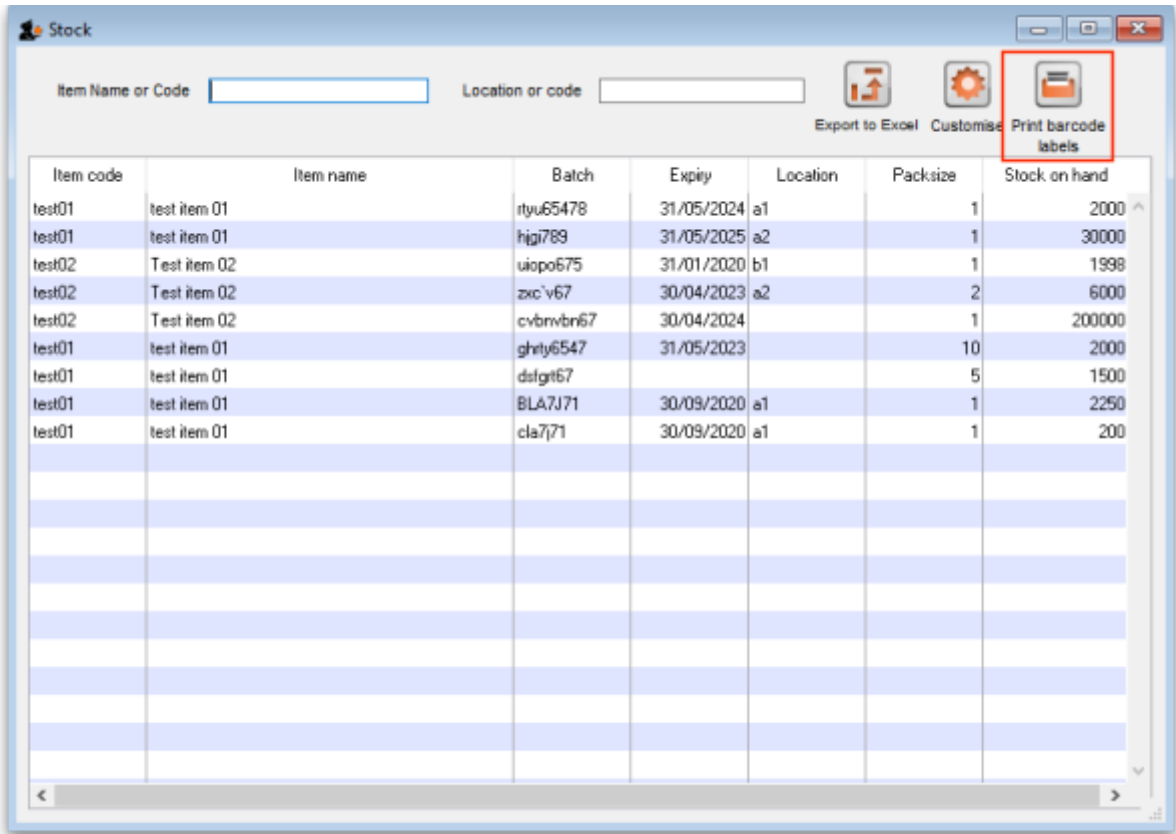
You can edit the number to something else if you wish. When you click on the **OK** button, the entered number of labels will be printed from your label printer.

If you select multiple lines on the supplier invoice before clicking on the *Print barcode labels* button, mSupply will print a label for each pack in the lines selected. This could be a lot of labels so mSupply asks you to confirm before telling the label printer to print them all:

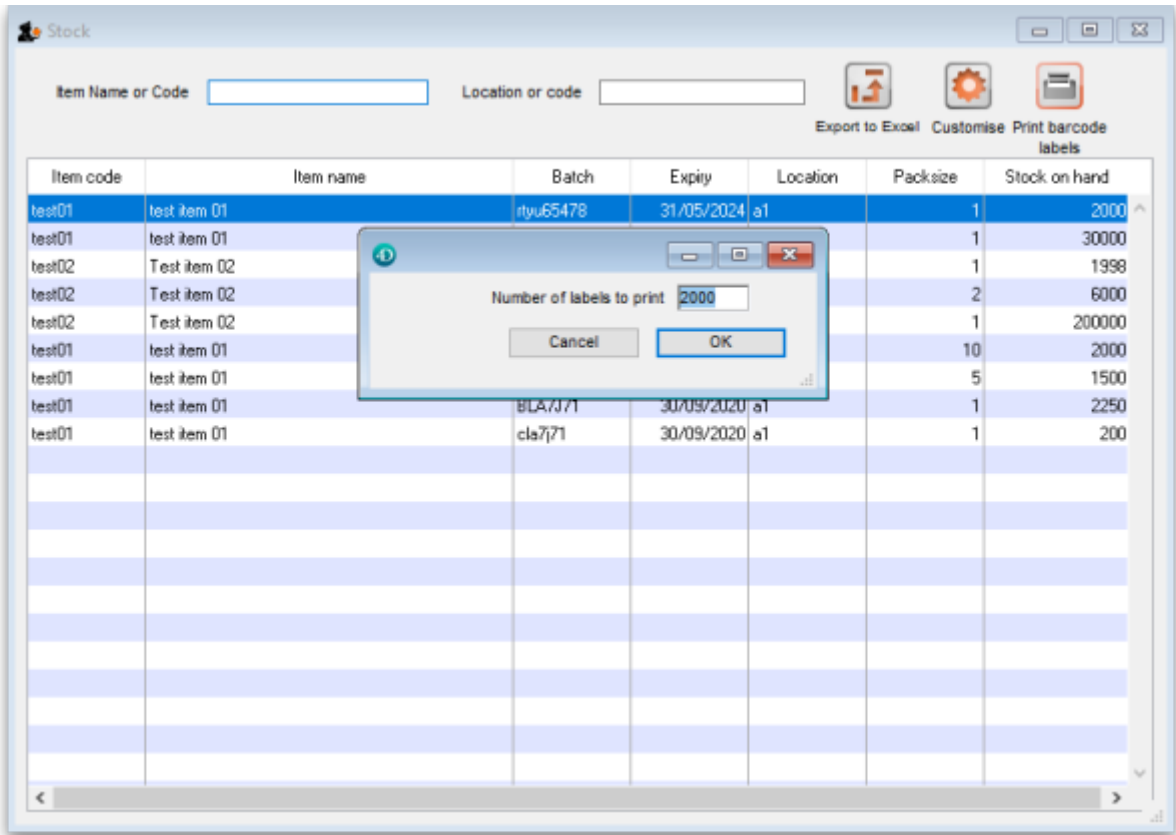


Stock list

Like a supplier invoice, the stock window (*Item > Show items with stock* on the menus) has a *Print barcode labels* button when the preference to use barcode scanners is turned on:

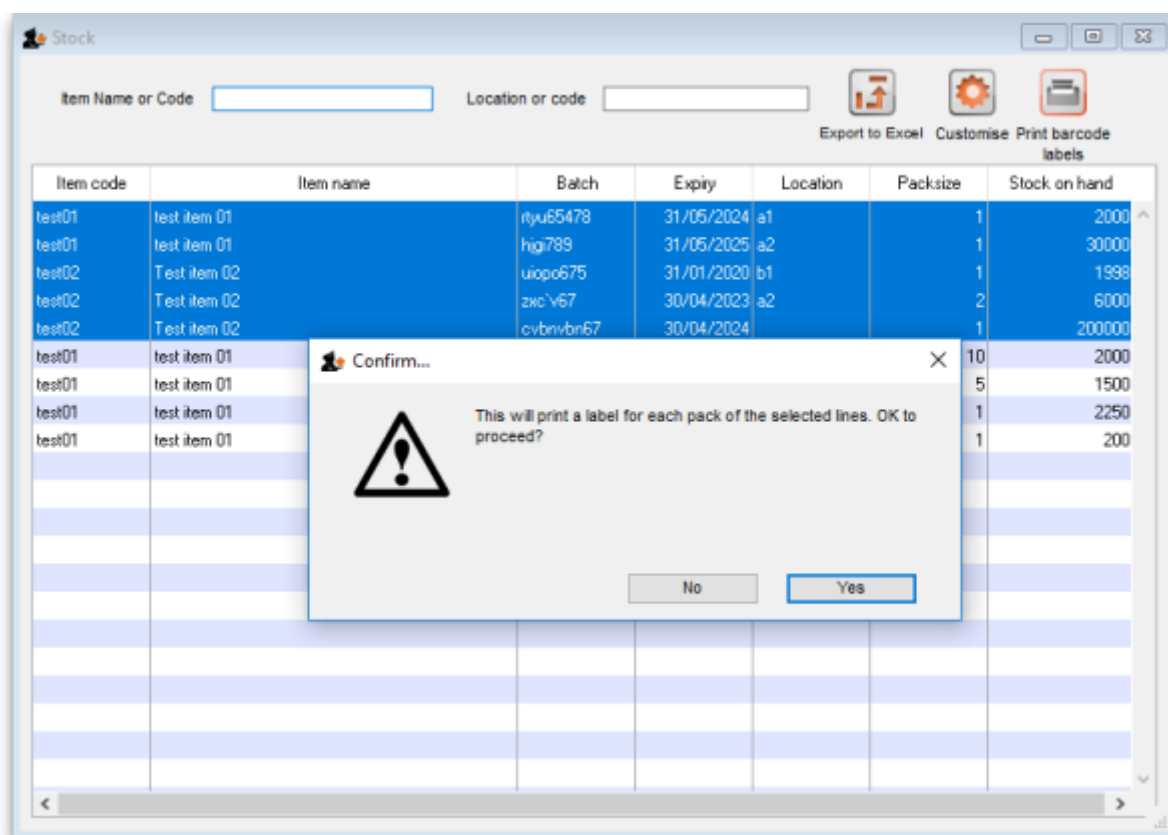


You can click on a single line before clicking on the *Print barcode labels* button, in which case mSupply offers to print a label for each pack in the selected line. You can edit the number to something else if you wish:



When you click on the *OK* button, the number of labels entered will be printed from your label printer.

You can also select multiple lines before clicking on the *Print barcode labels* button. If you do that, mSupply will offer to print a label for each pack in all the lines you have selected. Obviously, this could be a lot of labels, so mSupply asks you to confirm before it asks the printer to print them all:



Previous: [Pick list checking](#) Next: [Why an HIS module for mSupply?](#)

From:
<https://docs.msupply.org.nz/> - mSupply documentation wiki

Permanent link:
https://docs.msupply.org.nz/barcode_scanning:barcode_label_printing?rev=1549970065

Last update: **2019/02/12 11:14**

