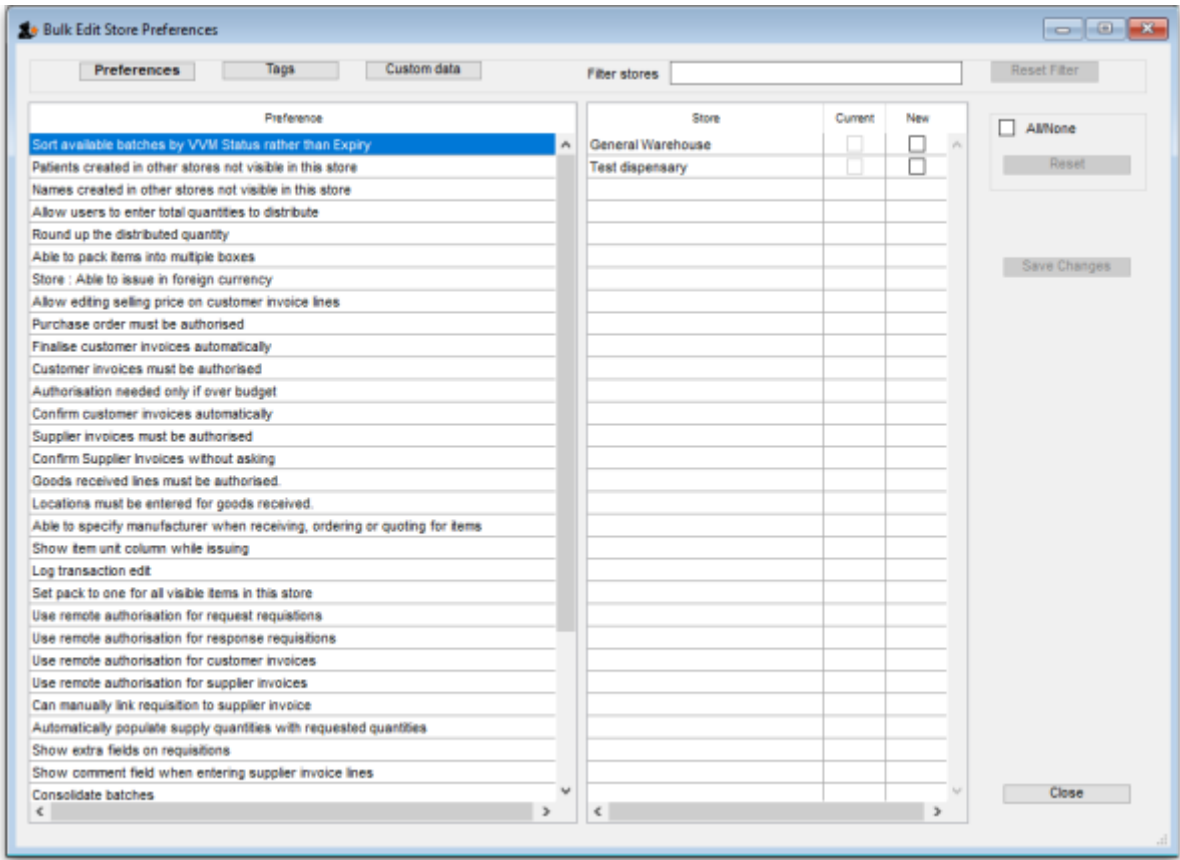


24.09. Bulk Store Preferences Editor

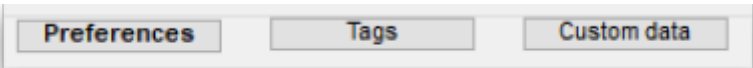
The **Bulk Store Preferences Editor** allows changing preferences and other properties for many (or all) stores at once. This will be particularly useful in any system where you have many stores in a single datafile.

For a user to be able ot use this function, they must have the *Edit store details* permission turned on (see the [Managing users](#) section for details).

Open the editor by choosing the *Special > Bulk edit store preferences...* menu item. This window will open:



The editor allows editing of basic **Preferences**, **Custom Data** (Not yet implemented but coming soon!) and **Tags** (Not yet implemented but coming soon!). Preferences are selected by default when the window opens but click one of the others in the top panel if you want to work with another type of store setting:



The *Preferences* table in the left hand panel shows all the available settings of the type specified above. The *Stores* list in the right hand panel shows all the stores in your datafile that you can edit the settings for (normal stores, dispensaries and report type stores).

When you select a Preference, the Stores list shows the current settings for each of the stores in the

Current column - this column is read only and can't be changed.

To change a selected preference, click on the checkbox in the **New** column to switch the preference on or off.

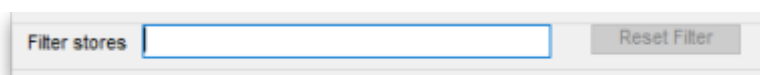
You can apply a setting to all displayed stores with the **All/None** checkbox on the far right panel. If you want to undo what the **All/None** button did then click on the **Reset** button.

Once you're done making changes for this preference, click the **Save Changes** button to write your preference settings to the database. The **Current** column will be updated with the new settings to reflect the saved changes.

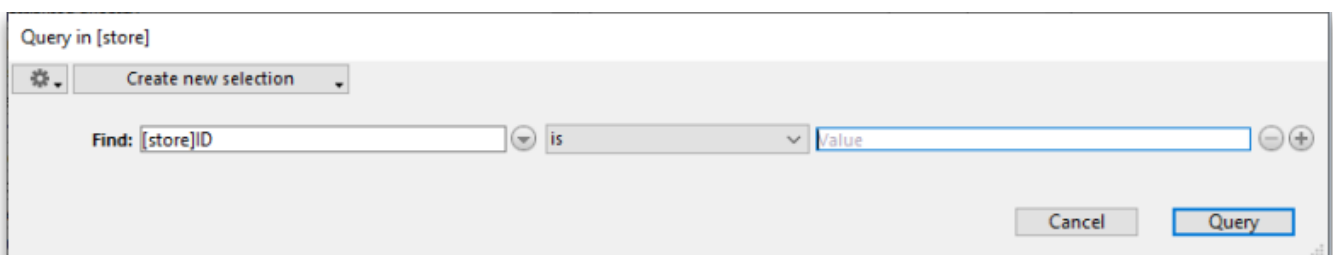
Please note: You *must* save changes before switching to another setting, or your changes will be lost. mSupply won't stop you moving to another preference before saving changes but it will tell you if you lose unsaved changes.

Filtering stores

If you only wish to make changes to a subset of stores, you can filter the Stores list with the *Filter stores* bar in the top panel:

A horizontal bar with the text "Filter stores" on the left, a text input field in the center, and a "Reset Filter" button on the right.

When you click the text entry field, you will be presented with a simple query editor:

A query editor window titled "Query in [store]". It contains a "Create new selection" button, a "Find:" label, a text input field containing "[store]ID", a dropdown menu showing "is", and another text input field containing "Value". There are also minus and plus icons next to the second input field. At the bottom right are "Cancel" and "Query" buttons.

Submitting this query will update the list of Stores to match the query you created. Restore the full list of Stores with the **Reset Filter** button.

Previous: [26.07. Virtual stores](#) | | Next: [26.09. Custom data](#)

From:
<https://docs.msupply.org.nz/> - mSupply documentation wiki

Permanent link:
https://docs.msupply.org.nz/other_stuff:bulk_store_preferences_editor?rev=1588600293

Last update: 2020/05/04 13:51



