

15.06. Entering a new logo

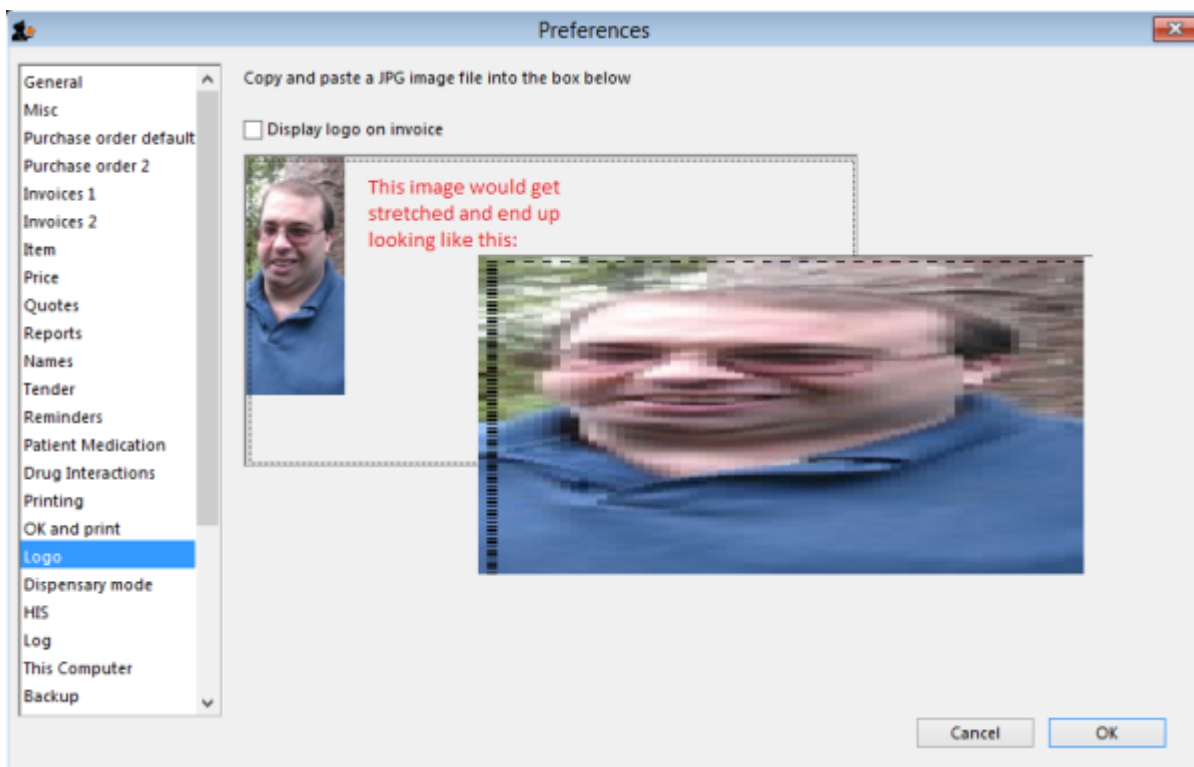


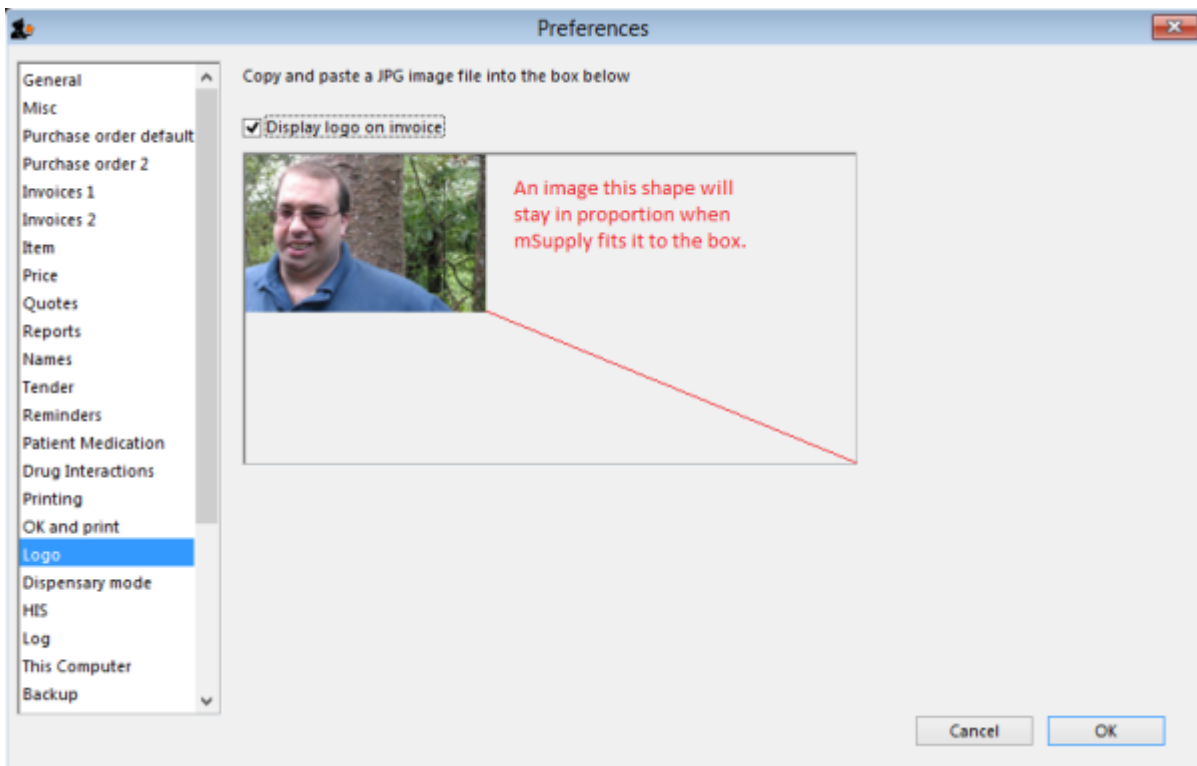
- The preferences described here (accessed through **File > Preferences...**) apply to all stores on an mSupply server.
- In a [synced system](#) there will be multiple 'sync satellites' and these settings can be different on each sync satellite.
- There are some settings that are 'per store' - refer [Store preferences](#), and store preferences can be different for each store on an mSupply server.

Select *File>Preferences*. On the left hand side choose *Logo*.

If you want this logo to be printed on invoices then tick the box.

Copy your image onto your clipboard (control+c) and paste into the area provided (control+v). Be careful to use an image of the aspect ratio 16:10 (16 wide to 10 high) as mSupply will stretch the image to fill the available area.





Previous: [Setting Up Dashboards](#) Next: [Synchronisation](#)

From: <https://docs.msupply.org.nz/> - **mSupply documentation wiki**

Permanent link: <https://docs.msupply.org.nz/preferences:logo?rev=1567591696>

Last update: **2019/09/04 10:08**

