

## 19.06. Mobile Dashboard set up (after v4.0)

August 2020:



- The instructions on this page are for configuring both:
  - [mSupply's legacy web dashboard](#). This is now superseded by the [mSupply Grafana web dashboard](#)
  - [mSupply Mobile dashboards](#). The instruction on this page are still the only way to configure them for mSupply versions 4.0 and later



The following instruction are for setting up dashboards for mSupply versions 4.0 and later. For mSupply versions earlier than v4.0, the dashboard setup is accessed and configured via the mSupply Preferences menu, refer to [Dashboard set up \(prior to mSupply v4.0\)](#).

### **Before you set the dashboard up you must:**



- know what ports are already in use on the server
- have an appropriate [SSL Certificate](#) set up.
- make sure your [webserver](#) is currently running.

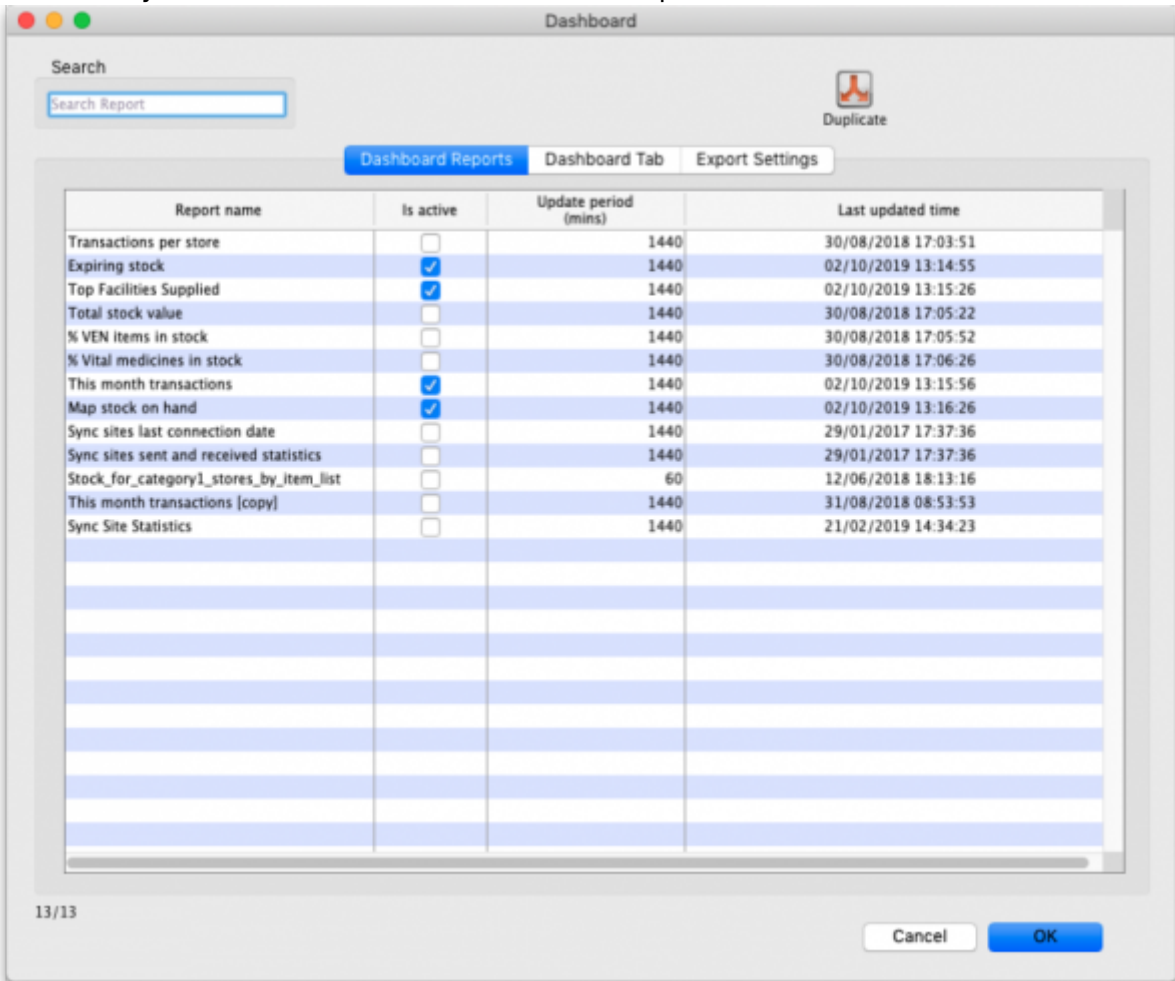
Sustainable Solutions can help with these.

## Access the dashboards configuration

1. On the **Admin** tab of the Navigator click on the **Dashboard** button:



2. This will show you a list of the available dashboard reports:



Configure the dashboards

1.

Tick the box in the **Is active** column for each report that you want generated. Note that if one or more reports are selected, the scheduled process for generating and refreshing the dashboard reports is automatically started, there is no separate setting for turning it on and off. Similarly, if no reports are selected the dashboard report generating process will be turned off automatically.
2.

Set the number of minutes in the **Update Period (mins)** column to set how often each of these reports is generated. 1440 is one full day.

• The **Export settings** tab is for telling mSupply when and how to update the data behind the dashboard (see the [Exporting msupply data to the dashboard](#) tab section below).

• The *Dashboard Tab* tab is for setting up Dashboard tabs (see the [Dashboard tabs](#) section below) for the Legacy mSupply dashboard. As of 2024, this section is most likely irrelevant.
- Available dashboard reports
- There are several built-in dashboard reports that everyone can use. The table below documents what they show and what properties can be edited:
- 
- If you would like help with adding one of these reports to your list, contact Sustainable Solutions on [support@msupply.org.nz](mailto:support@msupply.org.nz)
- | Report  | Method                                 | Format           | Parameters      |  |
|---|--|------------------|-----------------|--|
| <b>Expiring items for Store</b> Shows a list of items, for a given store, which will expire within a specified number of months.<br>v4.01 | <i>dashboardReportExpiringItemList</i> | Table, Bar chart | monthsToInclude | The number of months before expiry that the report includes (defaults to 3 if this parameter is missing)     |
|   |  |                  | storeCode       | search for a single store matching this code   |
|   |  |                  | dataElement     | Looks for the dataElement in the aggregator table. If blank, will default to AMC                             |
|   |  |                  | customisation   | allows for a client customisation: currently supports MAM.   |
|   |  |                  | ven_category    | V, E, N or E, N or V, E ..etc will filter for the respective VEN values. If blank, no filtering by VEN value |
|   |  |                  | chartType       | bar, table. If blank, will default to table  |
- mSupply documentation wiki - <https://docs.msupply.org.nz/>

Report	Method	Format	Parameter s
<b>Expiring Stock</b> Shows a graph of total value of stock expiring grouped by the number of months in which the stock will expire.	<i>dashboard_rep_expiring_stock</i>	Bar chart	None
Report	Method	Format	Parameters
<b>Items issued this month</b> Shows a list of items, per store, which were issued in the last 30 days. Uses store tag and master list to select items to be displayed.	<i>dashboard_itemRow_storeCol_usag</i>	Table	store_tag Identifies stores to display. Multiple stores can be selected by separating them by comma or space e.g. "bacau,CHC" or "bacau CHC"
			master_list Show items which are included in this master list
			period Number of days from the current date to look back
Report	Method	Format	Parameters
<b>Map stock on hand</b> Shows a map of the area specified, with an "X" if the facility is out of stock of the item, or a dot representing the amount of stock on hand.	<i>dashboard_map_stock_on_hand</i>	Map	country Name of country - compulsory but not shown
			item_code the code of the item to display
			lat_nw_corner the latitude of the North-West corner of the map
			long_nw_corner the longitude of the North-West corner of the map
			lat_se_corner the latitude of the South-East corner of the map
			long_se_corner the longitude of the South-East corner of the map
			store_tags A comma separated list of tags - or omit this parameter if you want to show stock for all stores
Report	Method	Format	Parameter rs
<b>Monthly transactions</b> Shows a bar chart of the number of purchase orders, goods receipts, supplier and customer invoices created this month.	<i>dashboard_rep_month_transacs</i>	Bar or Line chart	None

Report	Method	Format	Parameters	
<b>Stock_for_category1_stores_by_item_list</b> Shows a table of items in rows and stores in columns, with the stock on hand for that item in that store in each cell.	dashboard_rep_stk_StoreCols_Itm	Table	store_code	code or codes of stores to show. to specify multiple stores enter multiple store_code params (append @ for a "starts with" search)
			master_list	VHP - All Items Will search for items that are part of the master list : "VHP - All Items"
			item_code	items whose code matches this code (append @ for a "starts with" search)
			Category1_description	private Will search for names whose name category 1 is "private"

Report	Method	Format	Parameters	
<b>Store Transaction Count</b> Shows a count of each store's transactions for the past 7 and 30 days	dashboard_rep_count_store_trans	Line or Bar chart	store_tags	matches stores with this tag

Report	Method	Format	Parameters	
<b>Sync sites last connection date</b>	dashboard_report_last_sync_date	Table	None	

Report	Method	Format	Parameters	
<b>Sync sites sent and received statistics</b>	dashboard_report_sync_stat	Table	None	

Report	Method	Format	Parameters				
<b>Sync sites statistics</b> Shows a range of statistics related to synchronisation v4.02+	dashboardSyncSiteStatistics	table	storeTag	(default = %) - report will select stores where tags match % {storeTag} and sync_id_remote_site > 1			
			syncDayThreshold	(default = 5) - color cell red when days since last sync > syncDayThreshold			
			unfinalisedSIThreshold	(default = 0) - color cell red when number of unfinalised supplier invoices > unfinalisedSIThreshold			
			stocktakeDayThreshold	(default = 30) - color cell red when days since last stocktake > stocktakeDayThreshold			
			requisitionDayThreshold	(default = 30) - color cell red when days since last requisition > requisitionDayThreshold			
			lookBackPeriod	(default = 50) - Look back number of days for Supplier Invoice, Stocktake and Requisitions			
			lookBackPeriodCI	(default = 30) - Look back number of days for Customer Invoice			
			daysWithCIThreshold	(default = 0.2) - color cell red where 'days with customer invoice' divided by `number of working days` < daysWithCIThreshold			
Report		Method		Format	Parameters		
<b>This month's transactions</b> Shows a bar chart of the number of purchase orders, goods receipts, supplier and customer invoices created this month.		dashboard_rep_month_transacs		Bar chart	store_name	If provided the report shows details for the given store, otherwise the default store is used	
Report			Method		Format	Parameters	
<b>Top facilities supplied</b> The 10 customers in your store to which you have sent the greatest value of stock. Shows the value of stock for each customer.			dashboard_rep_top_facilities		Bar chart	None	

Report	Method	Format	Parameters
<b>Total stock value</b> A single figure in your default currency, showing the total value of the stock you have in the store you are viewing the dashboard for.	<i>dashboard_rep_total_stock_value</i>	h2	None
Report	Method	Format	Parameters
<b>Transactions per store</b> Shows a table of the transactions per stores within 30 days	<i>dashboard_rep_month_transacs</i>	Table	store_code Specify a store by entering a store code, or leave blank for the default store
Report	Method	Format	Parameters
<b>Trends in critical stock</b>	<i>dashboard_rep_in_stock_trends</i>	Time series chart	store_id the ID of the store you're interested in, or no value for all stores
			critical_stock TRUE if you want to include items with this field checked, false for all items
Report	Method	Format	Parameters
<b>Unfinalised Stock transfers</b> Shows unfinalised stock transfers within the specified time period for each facility which matches the "store_tags" parameter. If no store tags are passed in, transactions are shown for all stores.	<i>dashboardReportUnfinalisedStock</i>	Table	store_tags Queries only stores with matching store tags
			days_older_than Queries transactions that were created 'x' number of days ago
Report	Method	Format	Parameters
<b>VEN items in stock</b> Shows stock on hand of each items that belongs to the VEN (Vital, Essential, Necessary) category	<i>dashboard_rep_item_ven</i>	Line or bar chart	store_code store code - if empty then default store is chosen
			ven_category V,E,N or E,N or V,N ..etc will filter the VEN items. If blank all visible items for the store are chosen

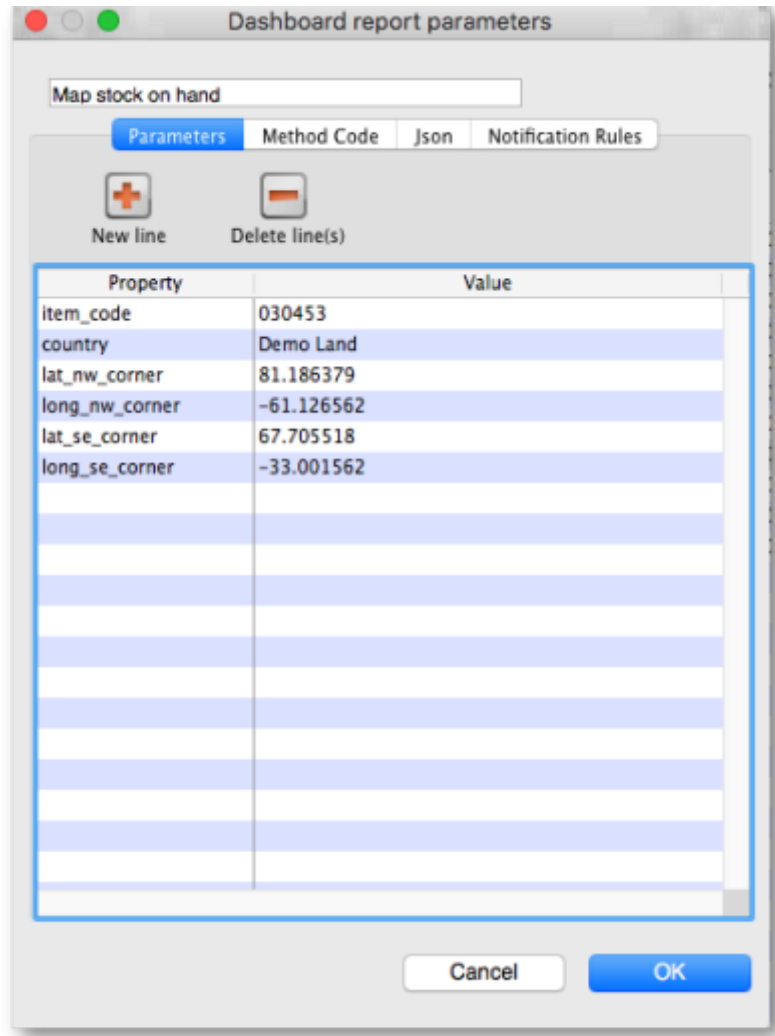
Report	Method	Format	Parameters	
<b>Vital items in stock</b> Shows a bar graph of the percentage of medicines of the chosen category in stock at each facility	dashboard_store_stock_percent	Bar chart	ven_category	v or e or n if you want to include items that are Vital or Essential or Necessary
			user_field_4	TRUE if you want to include items with this field checked
			user_field_7	TRUE if you want to include items with this field checked Note that the labels for fields 4 and 7 may be different, as they are set up in the mSupply preferences (misc tab)
			critical_stock	TRUE if you want to include items with this field checked, false for all items
			store_tags	entering healthcentre will only include stores with the "healthcentre" tag
Report	Method	Format	Parameters	
<b>Item Stock on Hand and Months Cover</b> Shows a table of item VEN status, Stock on Hand, Monthly Consumption, and Months Cover	dashboard_rep_stock_on_hand	Table	store_code	search for a single store matching this code
			lookBack_months	how many months of data to review when calculating; defaults to 6
			ven_category	V,E,N or E, N or V, N ..etc will filter the VEN items. If blank all visible items for the store are chosen. If not supplied the filter is not used; specify 'blank' to show items with empty ven. Note: each category in combination must be separated by comma, example: either v,e,n or v,e or v,n
			item_code	Searches for items matching this code
			customisation	Allows for a client customisation: currently supports MAM.

If you can't make a dashboard report that does what you want then please speak to us, it's usually a fairly simple matter for us to create one for you.

## Editing dashboard reports

Double-click a report in the list shown above and the following window will open:





## Parameters tab

- If there are any properties shown in the list, these can be edited to change what is displayed.
- To edit a property or value, click once to select the row, and then click again in the appropriate cell to edit it.
- To add or delete a row use the **New line** and **Delete line(s)** buttons at the top of the window.
- In the example shown in the screenshot above (a map report), the coordinates of two of the map corners and the item code of the item whose stocks will be shown on the map have been entered. Note that if you add extra properties to the default reports they'll be ignored.

## Method code tab

This tab is password protected. After entering the password you are shown the code used to execute the report, which you can edit as necessary.

## Json tab

This tab shows the JSON formatted text that was returned from the last successful execution of the report.

## Notification Rules tab

On this tab you can enter JSON formatted text to define the rules for notifying users with the results of the report. To Add, edit or delete any rules you must first click on the **Click to unlock** button and enter the password to allow editing.

An example of a valid rule is:

```
{ "Rules": [ { "userTags": [ "Monthly_report_emails" ], "notificationPeriod": 1, "lastSentAt": "2022-02-07T08:28:42Z" } ] }
```

The elements are as follows:

- `userTags` defines the tags the users must have to be sent the report. Add as many as you wish.
- `notificationPeriod` the period in whole days between sendings of the report.
- `lastSentAt` the date and time the report was last sent, in the format YYYY-MM-DDTHH:MM:SSZ. If set to "" (blank) this will trigger the sending of the report when the time in `notificationPeriod` has elapsed, measured from the time the **OK** button is clicked on this window.

## Exporting mSupply data to the dashboard

The mSupply Grafana dashboard has its own separate Postgres database to improve performance and prevent use of the dashboard slowing mSupply down. This means that the data for the dashboard must be exported from the mSupply database to the dashboard's database. You control the settings for this process by clicking on the *Export settings* tab of the window which is displayed when you click on the *Dashboard* icon on the *Admin* tab of the Navigator:

Dashboard

Dashboard Reports Dashboard Tab **Export Settings**

Postgres Server

Server

Port

User

Password

Database name

Export Settings

☐ All/None

Table	Export
abbreviation	<input type="checkbox"/>
account	<input type="checkbox"/>
adverse_drug_reaction	<input type="checkbox"/>
aggregator	<input checked="" type="checkbox"/>
asset	<input type="checkbox"/>
asset_condition	<input type="checkbox"/>
asset_document_type	<input type="checkbox"/>
asset_property	<input type="checkbox"/>
asset_property_asset_join	<input type="checkbox"/>
asset_status	<input type="checkbox"/>
asset_type	<input type="checkbox"/>

URL

Next scheduled export:  
14/02/2022 3:26 PM

## Postgres server section

Enter the details of the dashboard's Postgres server in here:

- **Server:** the URL of the server the database resides on
- **Port:** the port the database is being served on
- **User:** the username mSupply will use to login to the dashboard's database
- **Password:** the password ms will use to login to the dashboard's database
- **Database name:** the name the dashboard's database has been given in Postgres

Test connection button: when you have entered all the details in this section, click on this button to test the connection to the dashboard's database. mSupply will tell you whether the connection is successful or not.

## Export settings section

In the table select the tables in the mSupply database that you want to export to the dashboard. Care needs to be taken here; you need to choose all the tables that will provide the information you need in the dashboard but not those you do not need as this may impact on the speed of the export, and therefore how quickly your dashboard can be updated.

Use the **All/None** checkbox to quickly check or uncheck all the tables in the list.

The **URL** field shows you the URL that mSupply is exporting the data to.

**Full export of Checked Tables button:** Clicking this will force mSupply to empty the dashboard database and export all the data from the selected tables to the dashboard database.

**Run Next Scheduled Export Now button:** Clicking this will make mSupply immediately export to the dashboard database all the data that has changed in its database since the last export to the dashboard.

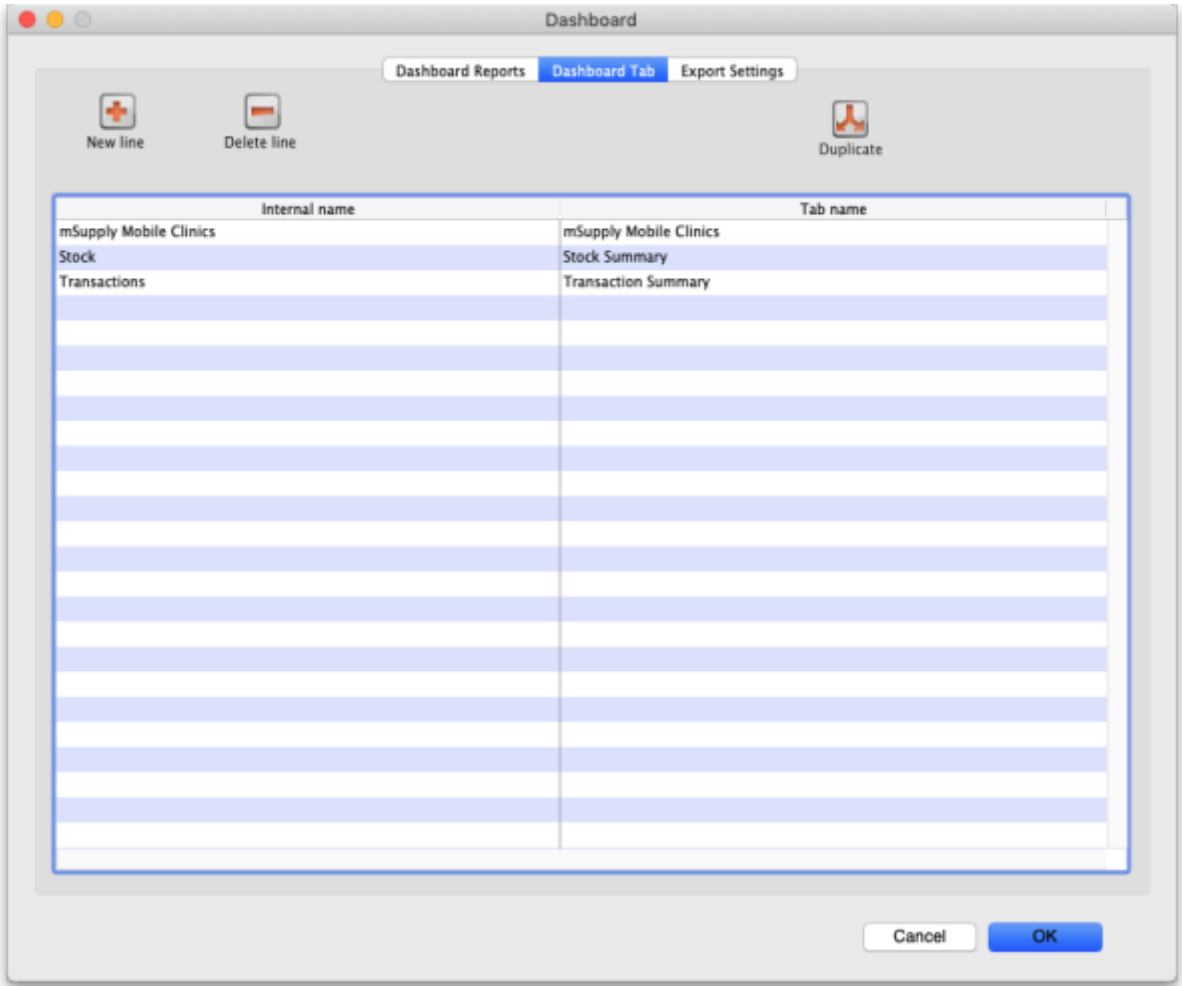
When these settings have been saved, mSupply will use them to automatically export the selected data to the dashboard according to the schedule that has been set.



August 2020: The remaining instructions on this page are for configuring mSupply's legacy web dashboard. This may still work, but is no longer supported as it has been superseded by the [mSupply Grafana web dashboard](#). The instructions are left here for historic reference only.

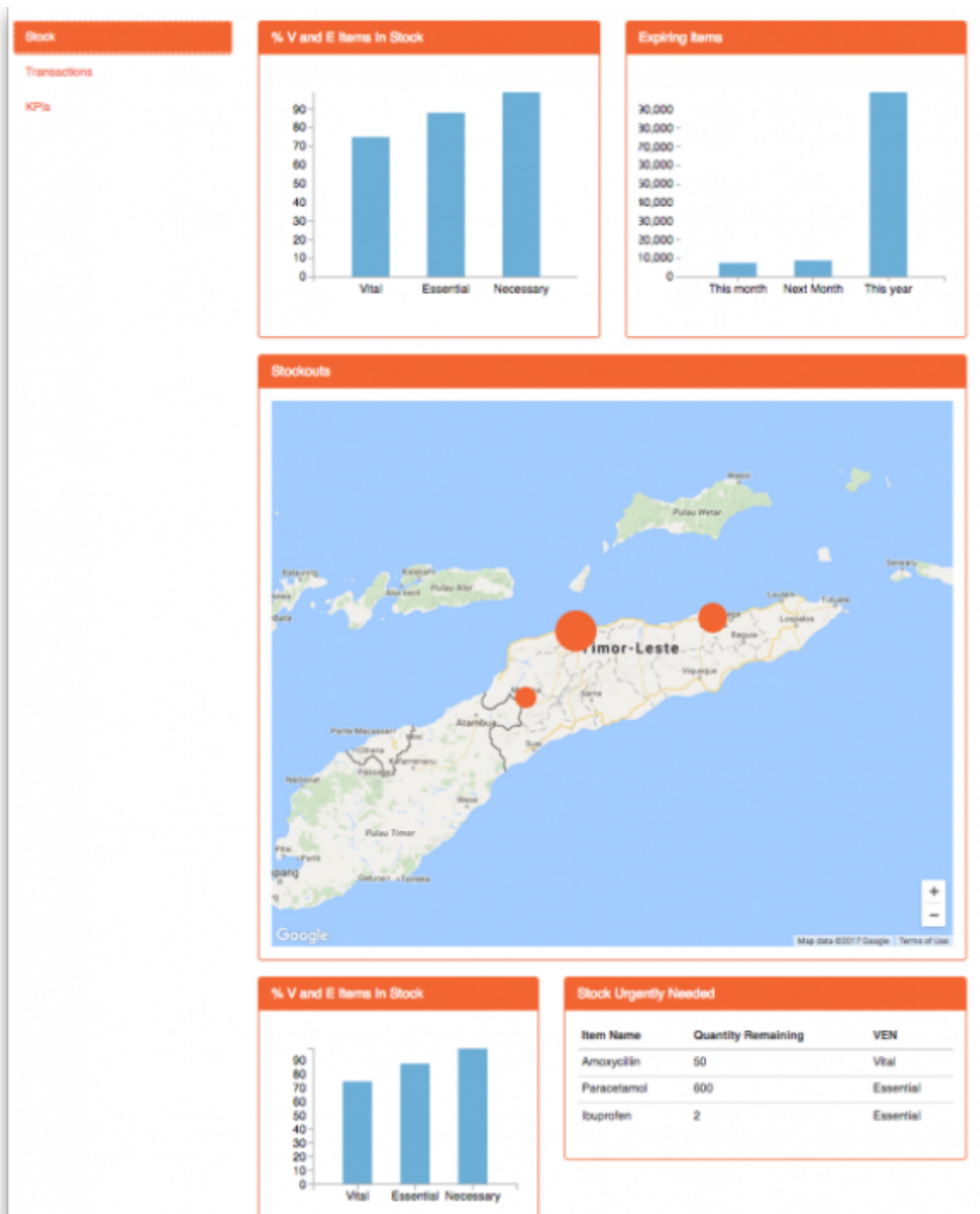
## Dashboard tabs

You set up Dashboard tabs which will display on your dashboard. Dashboard tabs are “containers” for one or more dashboard reports. To edit them click on the *Dashboard Tabs* tab of the window which is displayed when you click on the *Dashboard* icon on the *Admin* tab of the Navigator:



To add a tab click the **Add** button. To edit a tab, double-click it. You will be shown a window for editing a dashboard tab:





- The tabs themselves occupy their own space on the left of the window- they aren't considered when laying out the dashboard
- The first row has two reports- each report takes up half the row. So for the first report:
  - Row 1, Col 1, width 12 ("12" means it takes up the full width of the cell it is in- "4" would mean it would take up 1/3 of the width)
- For the report at the top right:
  - Row 1, Col 2, width 12
- For the map
  - Row 2, Col 1, width 12
- The next two reports are on the same row, but are divided into 5/12 and 7/12 of the width of the window, so we put them in the same cell but change the width settings:
  - Row 3, Col 1, width 5
  - Row 3, Col 1, width 7

## Adding a report to a dashboard tab

Click **New Line** to add a new report to the tab. Then edit the values in each column

- **Row:** The row it will be in
- **Column:** The column within the row- set to "1" if you don't have multiple reports on this row.
- **Report title:** The title that will show in the Orange heading bar for the report. Note that the same report can display different information depending on the parameters you set for that report- hence the need for the ability to customise report names
- **Type:** You'll need to know the appropriate type for the report you're displaying. The options are
  - bar\_chart
  - table
  - pie\_chart
  - time\_series
  - map
  - line\_chart
- **Width:** The fraction of the cell width in "twelfths" that this report will take up ("6" will make it take up half the cell width)
- **Report:** Choose the report name from the drop-down list of available reports

## Configure users to have access to dashboards

Once the tabs have been setup you have to choose which users will see which tabs. You do this in individual users' settings. For instructions on how to do this, see:

- [Managing users > General tab > Users can:](#) (Use the Dashboard permission)
- [Managing users > Dashboard tab](#)

Previous: [19.05. Web Dashboard](#) | | Next: [19.07. Online catalogue](#)

From:

<https://docs.msupply.org.nz/> - mSupply documentation wiki

Permanent link:

[https://docs.msupply.org.nz/web\\_interface:dashboard\\_setup](https://docs.msupply.org.nz/web_interface:dashboard_setup)

Last update: **2024/04/09 02:01**

