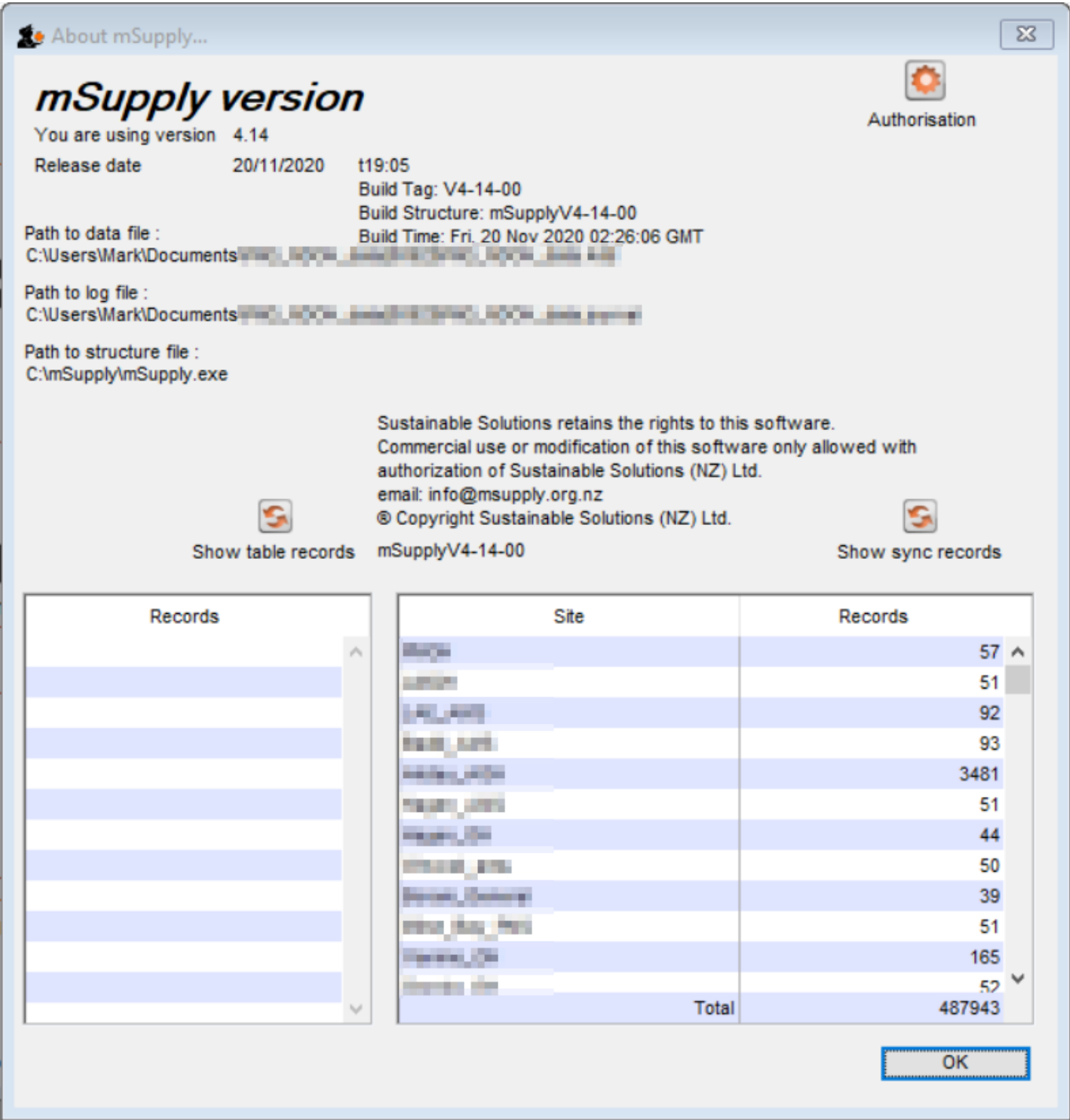


# 23.21. Help menu

## Help > About mSupply

Choosing this item displays information about your mSupply installation.



## Authorisation

The Authorisation button is provided largely for our support team to assist with resolving any issues.

You can safely ignore it.

## Updating mSupply

For single user versions of mSupply, you can see if you have the latest version by choosing **Special > Check for updates**

Choosing this item from the *Special* menu will connect to the mSupply web site and compare your current mSupply version with the version you are now using.

If an update is available, you will be shown a window where you can click to download the latest version.



Previous: [25.20. Server troubleshooting](#) | | Next: [26. Other Topics](#)

From:

<https://docs.msupply.org.nz/> - mSupply documentation wiki

Permanent link:

<https://docs.msupply.org.nz/admin:updating?rev=1612130772>

Last update: **2021/01/31 22:06**

