

# Barcode label printing

Added: Version 4.01

You might want to print barcode labels for your stock if an existing label is damaged, if you break a box down into smaller pack sizes and the contents don't have individual GS1 barcodes or if some stock comes into your warehouses and it doesn't have valid GS1 barcodes on it.

mSupply prints barcode labels onto stocky labels using a label printer. Before you try to print any barcode labels you must setup your printer. See for [Label printing preferences](#) details.

There are several places in mSupply where you can print barcode labels for your stock.

## Item details page

You can print out the barcode labels for a single line at a time. Select the line you want to print the labels for then click on the *Print barcode labels* button:

Item details...

General  
Misc  
Usage  
**Stock**  
Ledger  
Quotes  
Backorders  
Notes  
Reconcile  
Bill of materials  
Purchase Orders  
Order options  
Dispensing  
Reporting  
Log  
Requisitions  
Stores  
Barcodes

Item name: Test item 02  
Item code: test02  
Store: General

Show zero lines Print Split Update sell prices Show related invoices Consolidate Labels **Print barcode labels**

Line	Available packs	Total packs	Hold	Pack size	Batch	Expiry date	Supplier	Manufacturer	Location	Cost Price	Sell Price	Status	Tot...
1	1998	1998	<input type="checkbox"/>	1	uiop6...	31/01/2020	testsup...		b1	0.00	0.00		0
2	3000	3000	<input type="checkbox"/>	2	zxcv67	30/04/2023	testsup...		a2	0.00	0.00		0
3	200000	2000...	<input type="checkbox"/>	1	cvbrv...	30/04/2024	testsup...			0.06	0.06		0

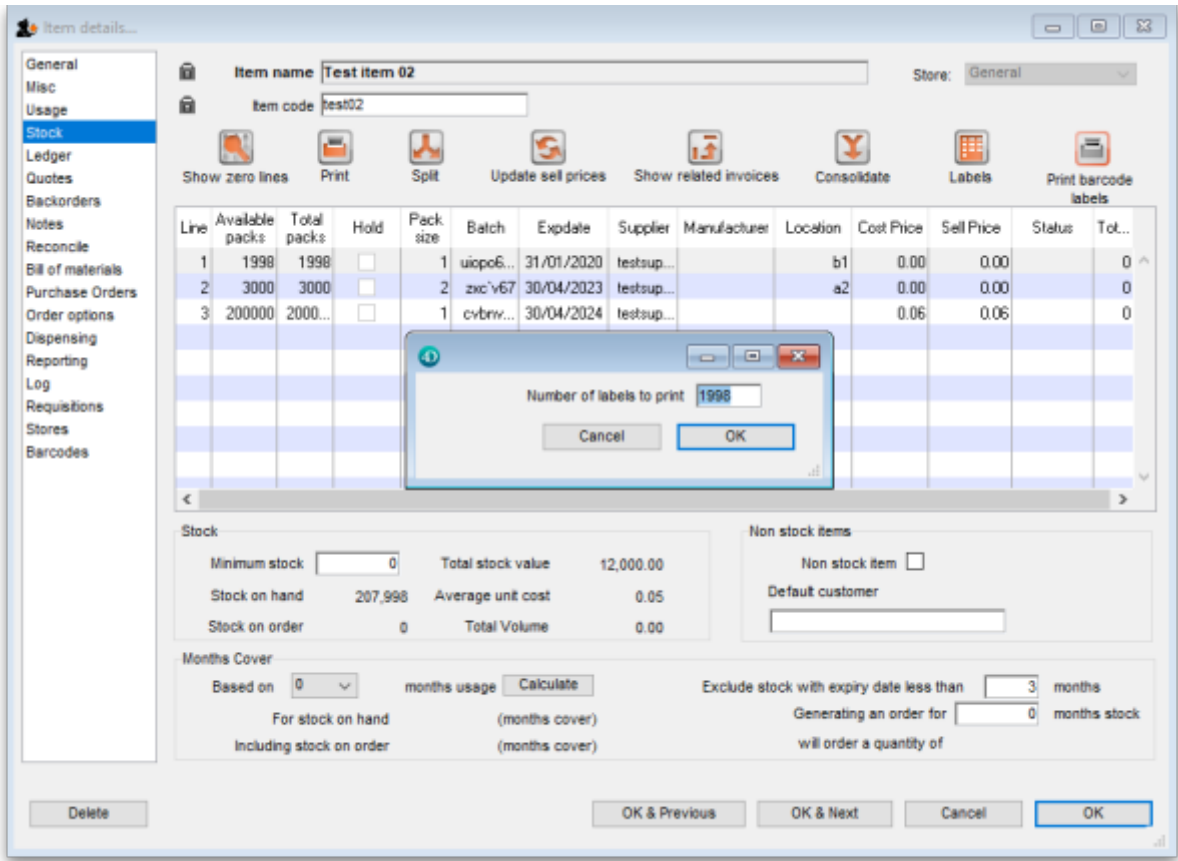
Stock  
Minimum stock: 0  
Stock on hand: 207,998  
Stock on order: 0  
Total stock value: 12,000.00  
Average unit cost: 0.05  
Total Volume: 0.00

Non stock items  
Non stock item: ☐  
Default customer:

Months Cover  
Based on: 0 months usage  
Calculate  
For stock on hand (months cover)  
Including stock on order (months cover)  
Exclude stock with expiry date less than: 3 months  
Generating an order for: 0 months stock  
will order a quantity of:

Delete OK & Previous OK & Next Cancel OK

mSupply will offer to print a label for each pack in the selected line by default:



You can edit the number to something else if you wish. When you click on the **OK** button, the entered number of labels will be printed from your label printer.

## Supplier invoice

When the preference to use barcode scanners is turned on, a supplier invoice has a *Print barcode labels* button:

**Supplier invoice**

Name: Test supplier 01  
Their ref: testsup01  
Comment:   
Confirm date: 00/00/00  
Category: None  
Colour: Black  
Invoice number: 0  
Entry date: 28/01/2019  
Status: nw  
Goods received ID: 0  
Purchase Order ID: 0  
Entered by: user 1 (pass=  
Store: General

New line Delete line **Print barcode labels**

L...	Lo...	Item Name	Qty	Pack	Batch	Expiry	Cost Price	Sell Price	Price extension

Other charges  
Item(s):   
Amount: 0.00

Subtotal: 0.00  
0 % tax: 0.00  
Total: 0.00

☐ Hold  
☐ Finalise  
Export batch: 0  
Margin: 0.00

OK & Next Delete **OK**

After adding lines to the supplier invoice you can print barcode labels for them. If you select a single line then click the button, mSupply will by default offer to print a label for each pack in the line:

Supplier invoice

Name: Test supplier 01  
Their ref: testsup01  
Comment:   
Confirm date: 00/00/00  
Category: None  
Colour: Black  
Invoice number: 4  
Entry date: 28/01/2019  
Status: nw  
Goods received ID: 0  
Purchase Order ID: 0  
Entered by: user 1 (pass=  
Store: General

New line Delete line Print barcode labels

General Summary by Item Summary by Batch Price Log

L...	Lo...	Item Name	Qty	Pack	Batch	Expiry	Cost Price	Sell Price	Price extension
1		test item 01	1000	1	asd	31/05/2021	0.01	0.01	10.00
2		Test item 03						3.00	90.00

Number of labels to print: 1000  
Cancel OK

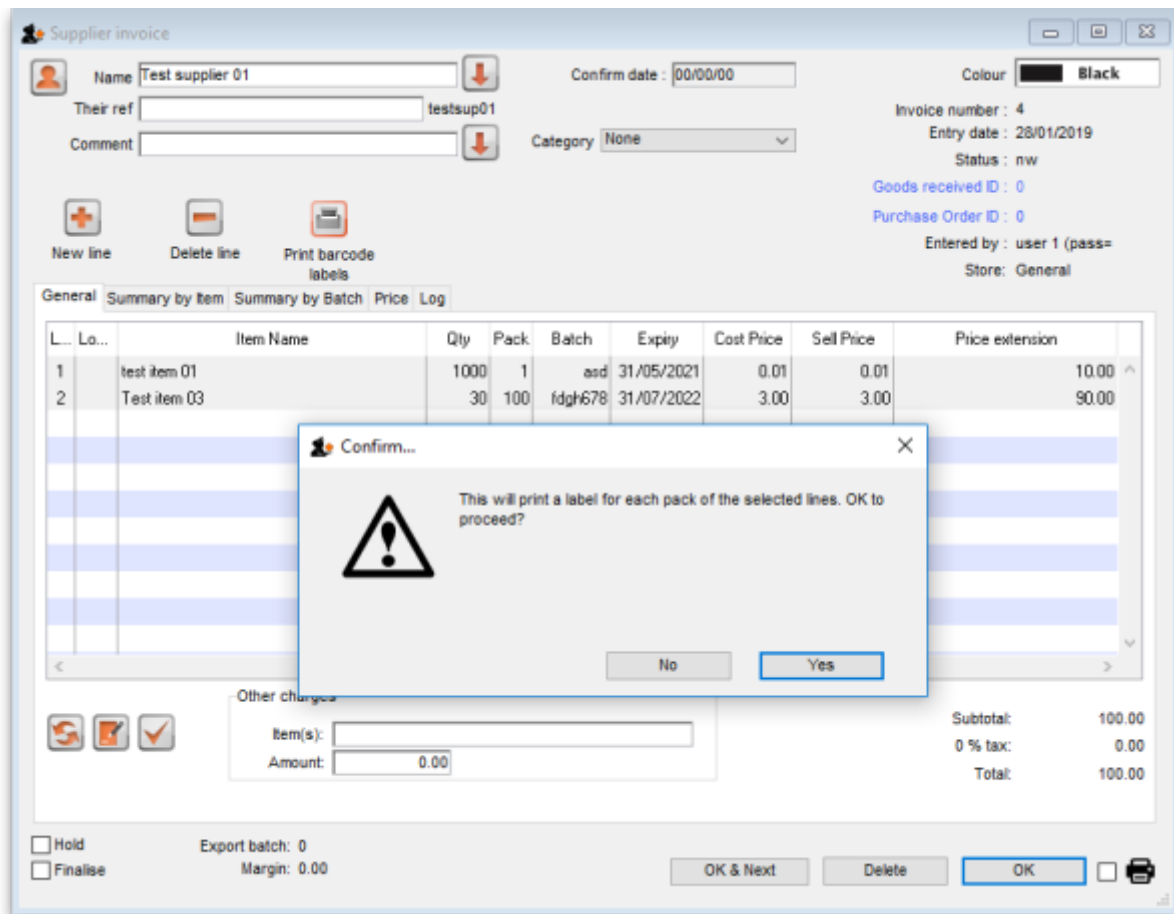
Other charges  
Item(s):   
Amount: 0.00

Subtotal: 100.00  
0 % tax: 0.00  
Total: 100.00

Hold  
Finalise  
Export batch: 0  
Margin: 0.00  
OK & Next Delete OK

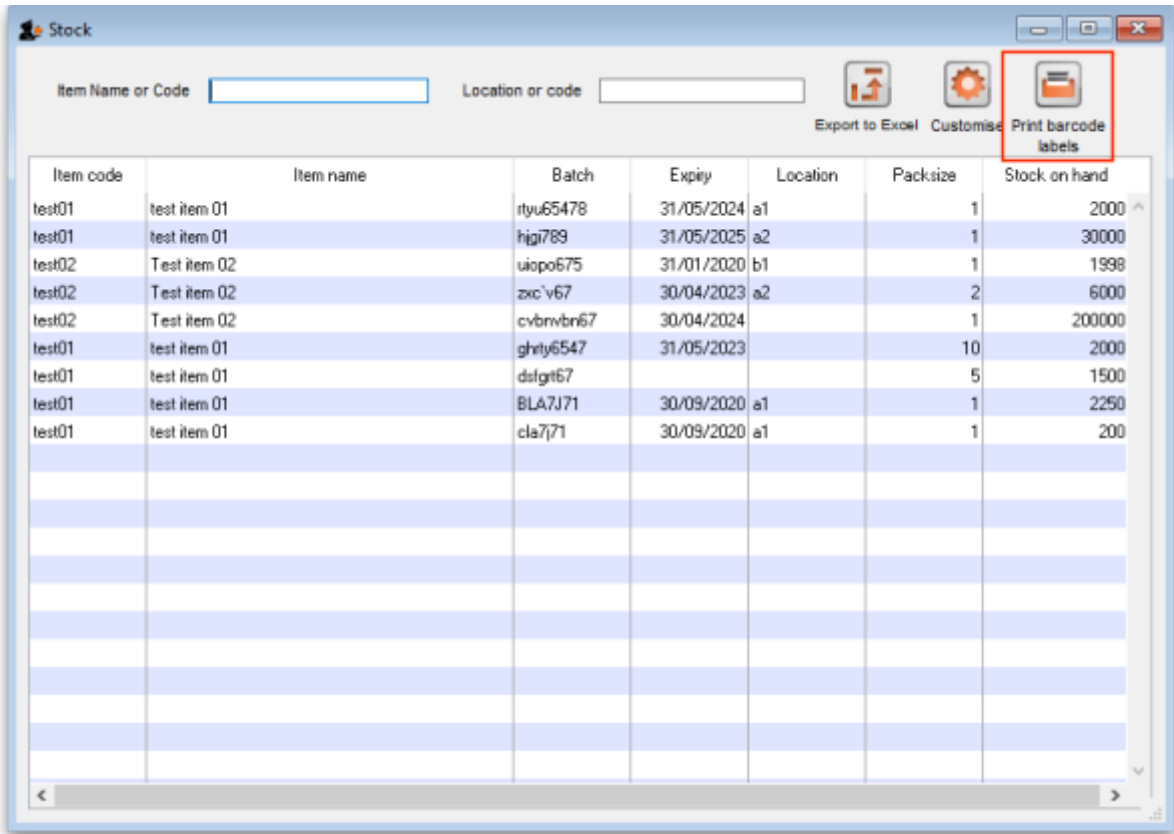
You can edit the number to something else if you wish. When you click on the **OK** button, the entered number of labels will be printed from your label printer.

If you select multiple lines on the supplier invoice before clicking on the *Print barcode labels* button, mSupply will print a label for each pack in the lines selected. This could be a lot of labels so mSupply asks you to confirm before telling the label printer to print them all:

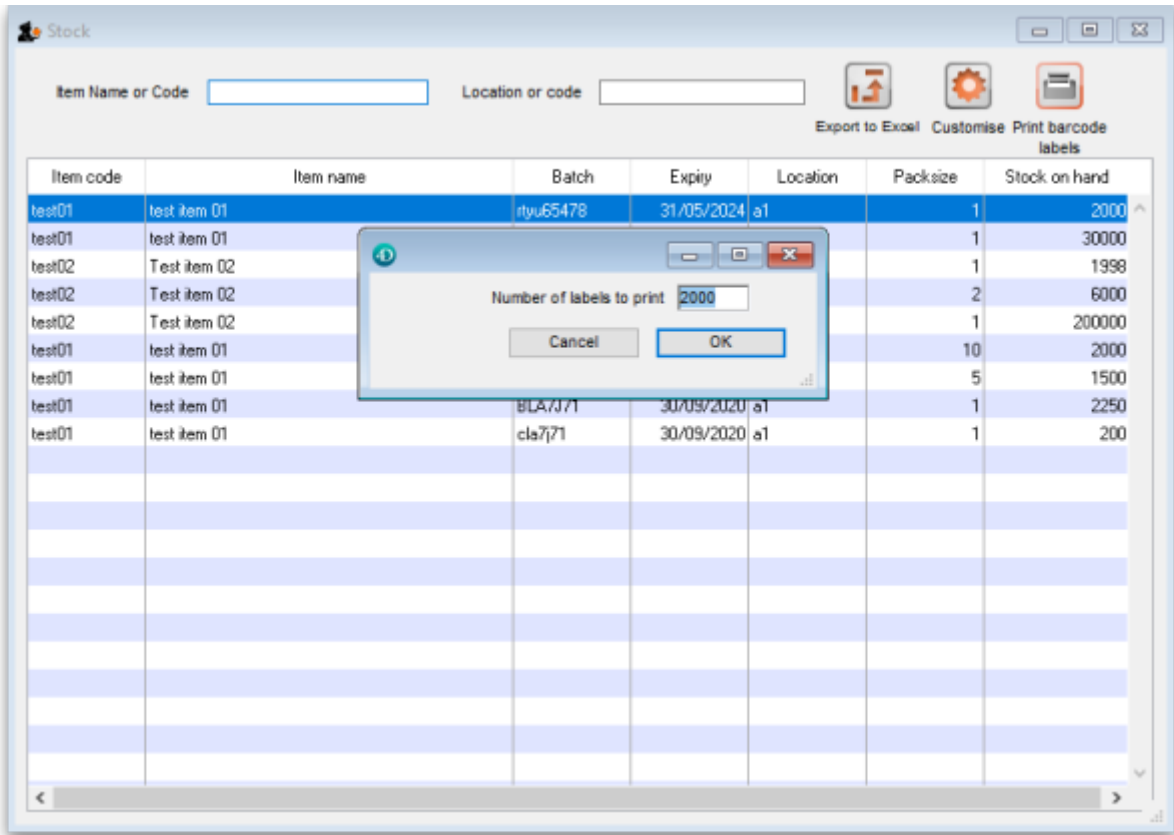


## Stock list

Like a supplier invoice, the stock window (*Item > Show items with stock* on the menus) has a *Print barcode labels* button when the preference to use barcode scanners is turned on:

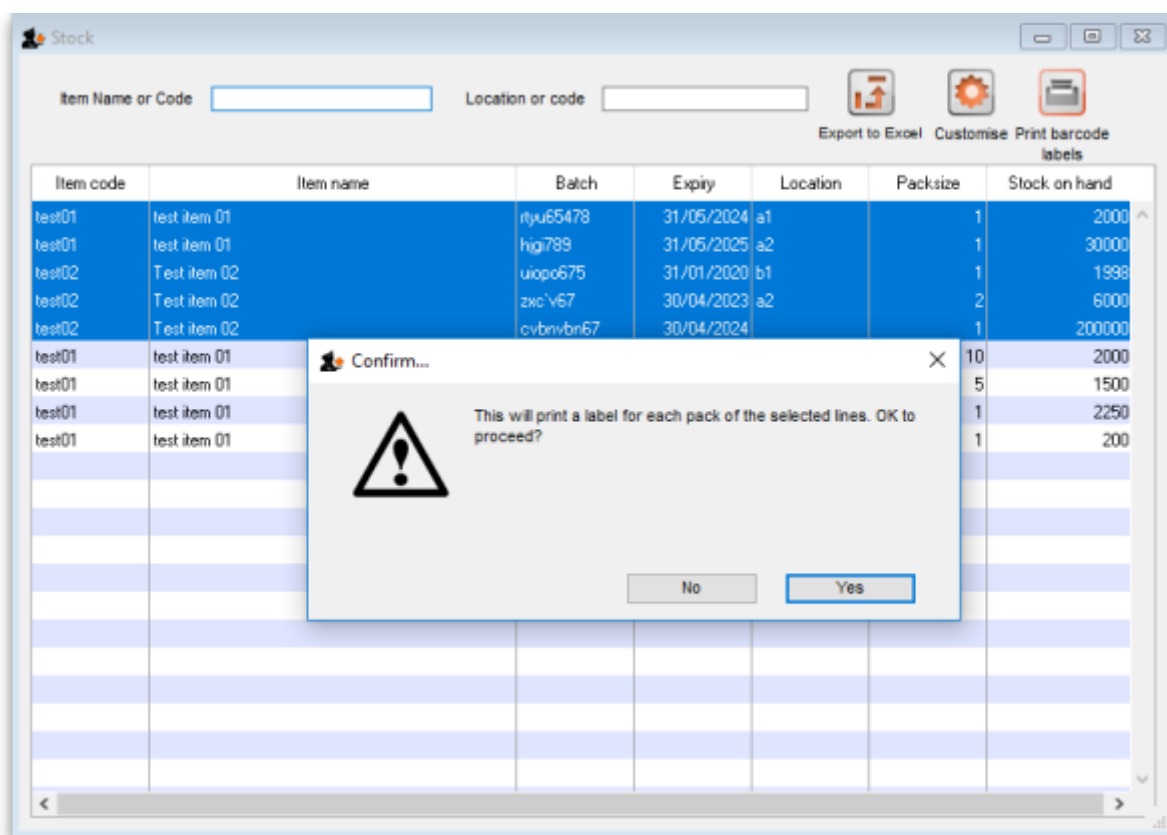


You can click on a single line before clicking on the *Print barcode labels* button, in which case mSupply offers to print a label for each pack in the selected line. You can edit the number to something else if you wish:



When you click on the *OK* button, the number of labels entered will be printed from your label printer.

You can also select multiple lines before clicking on the *Print barcode labels* button. If you do that, mSupply will offer to print a label for each pack in all the lines you have selected. Obviously, this could be a lot of labels, so mSupply asks you to confirm before it asks the printer to print them all:



Previous: [Pick list checking](#) Next: [Why an HIS module for mSupply?](#)

From:  
<https://docs.msupply.org.nz/> - mSupply documentation wiki

Permanent link:  
[https://docs.msupply.org.nz/barcode\\_scanning:barcode\\_label\\_printing?rev=1549970065](https://docs.msupply.org.nz/barcode_scanning:barcode_label_printing?rev=1549970065)

Last update: **2019/02/12 11:14**

