



This Doc is under review : Read with caution !

## 28.17. Zebra Label Printer : How to print via the windows driver



This guide covers connecting a Zebra label printer on **Windows** (USB or Network) so it can be used to print labels from any mSupply reports.

mSupply normally prints directly to the Zebra Label Printer via the use of EPL command which does not require the normal print driver that is provided by the vendor.

The main advantage of using the Windows or MAC driver is that you can use mSupply's reporting feature to print labels.

Here is the workflow that can be achieved :

- You want to print a list of label for each item or even location. For this example let say items.
- The Zebra Label Printer can be added as a printer using the printer driver supplied by the vendor.
- A custom label size of 70mm x 35mm (70cm x 3.5cm) must be defined for the printer.
- A report using the `custom label size` can be designed. For this the support team will have to create a custom report.
- Finally from the mSupply report menu : You can run a report like Report > Item & stock > item list... Simply choose the custom report for the label.
- Preview the report
- Print to the Zebra Label Printer and a bulk of label can be printed.

### Requirements

- A Windows PC or laptop
- Zebra label printer (USB or LAN-connected)
- Zebra Setup Utility (Windows) — download link below
- Label stock: 75mm x 35mm (7cm x 3cm)

### Step 1: Download the Zebra Setup Utility

Download the Windows Zebra Setup Utility from Zebra's site:

[Zebra Setup Utility / Nucleus Connector download](#)

This utility handles driver installation for both USB and network-connected Zebra printers.

## Step 2: Connect the printer

### Option A – USB

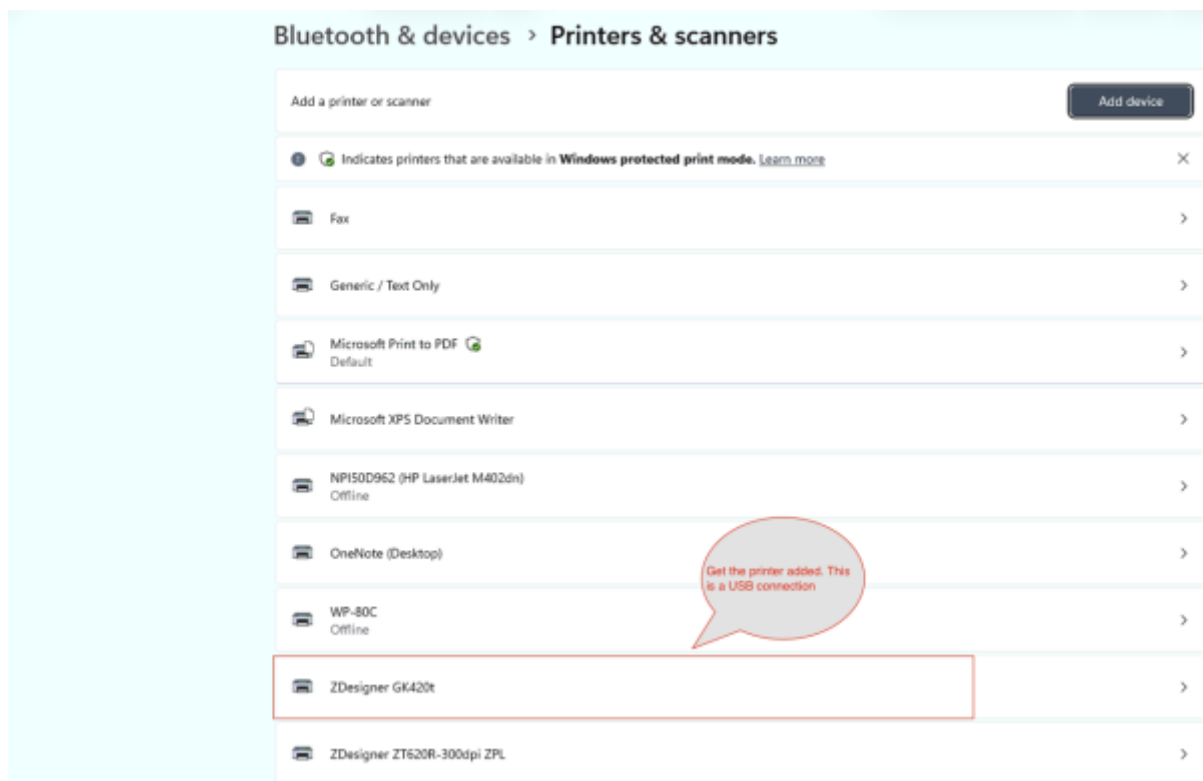
1. Connect the Zebra printer to the Windows PC via USB cable.
2. Open the Zebra Setup Utility.
3. Follow the wizard to install the printer driver for the detected USB printer.

### Option B – Network (LAN)

1. Confirm the Zebra printer is connected to the same network (it will have its own IP address — check the printer's network config page/printout if needed).
2. Open the Zebra Setup Utility.
3. Choose to add a new printer, and select the **network/LAN connection** option instead of USB.
4. Enter the printer's IP address when prompted.
5. Complete the wizard to install the driver.

Both connection methods have been confirmed working.

If properly installed, the label printer should appear as part of your windows printer list.



## Step 3: Set the label size

The label size must be defined to match the label size you have:

- **Most common Label size: 70cm x 35cm (70mm x 35mm)**

This is set either in the Zebra Setup Utility's printer configuration/media settings, or in the Windows printer driver's preferences (Page Setup / Stock / Media Size), depending on the exact Zebra model. Set this **before** printing a test label, otherwise output will be misaligned or clipped.

## Step 4: Create a report based on the Zebra label print and custom page size

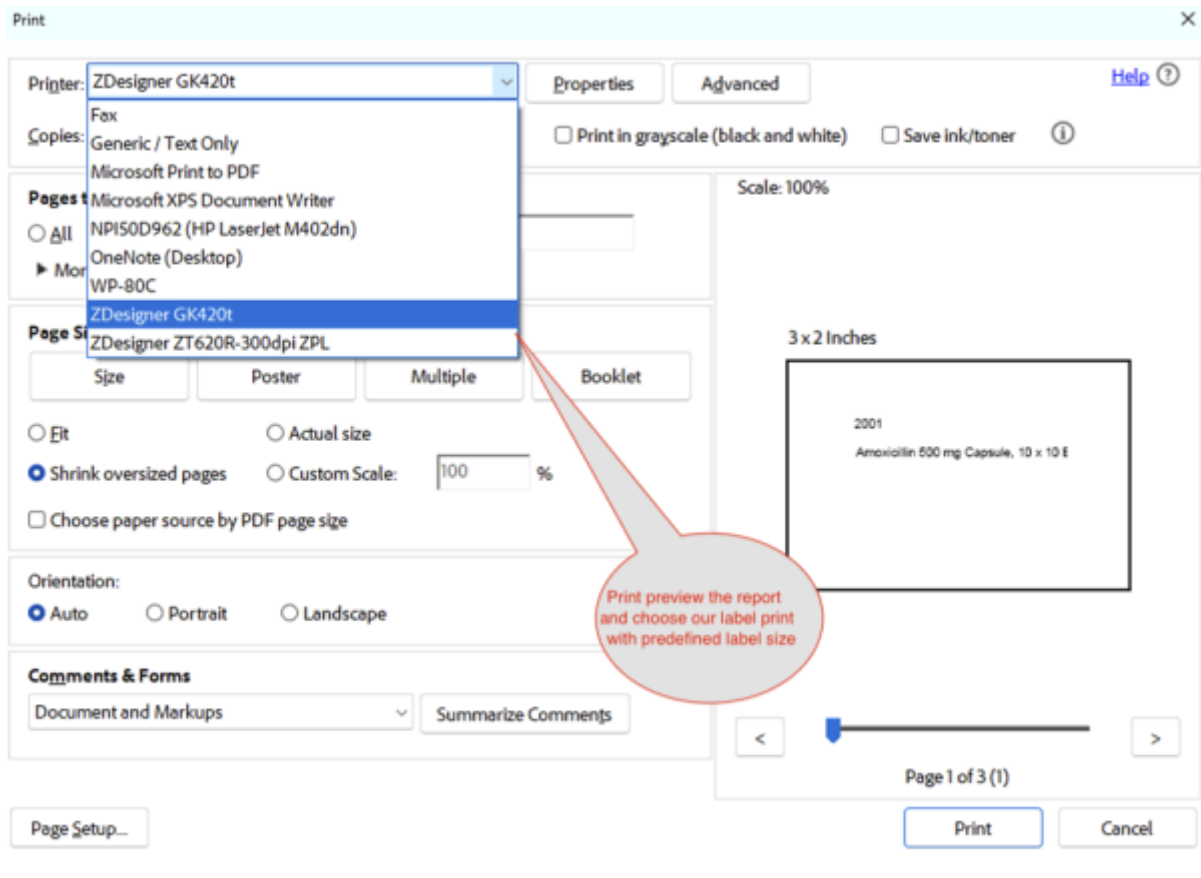
Locate a report that you can use to print labels. For example, mSupply has a report : Report > item & Stock... > Item List ... This report can be used to print a item per label. So if the report was to report on ten items, you could print ten labels at once.

Design the report for this task. If you need help then ask support.

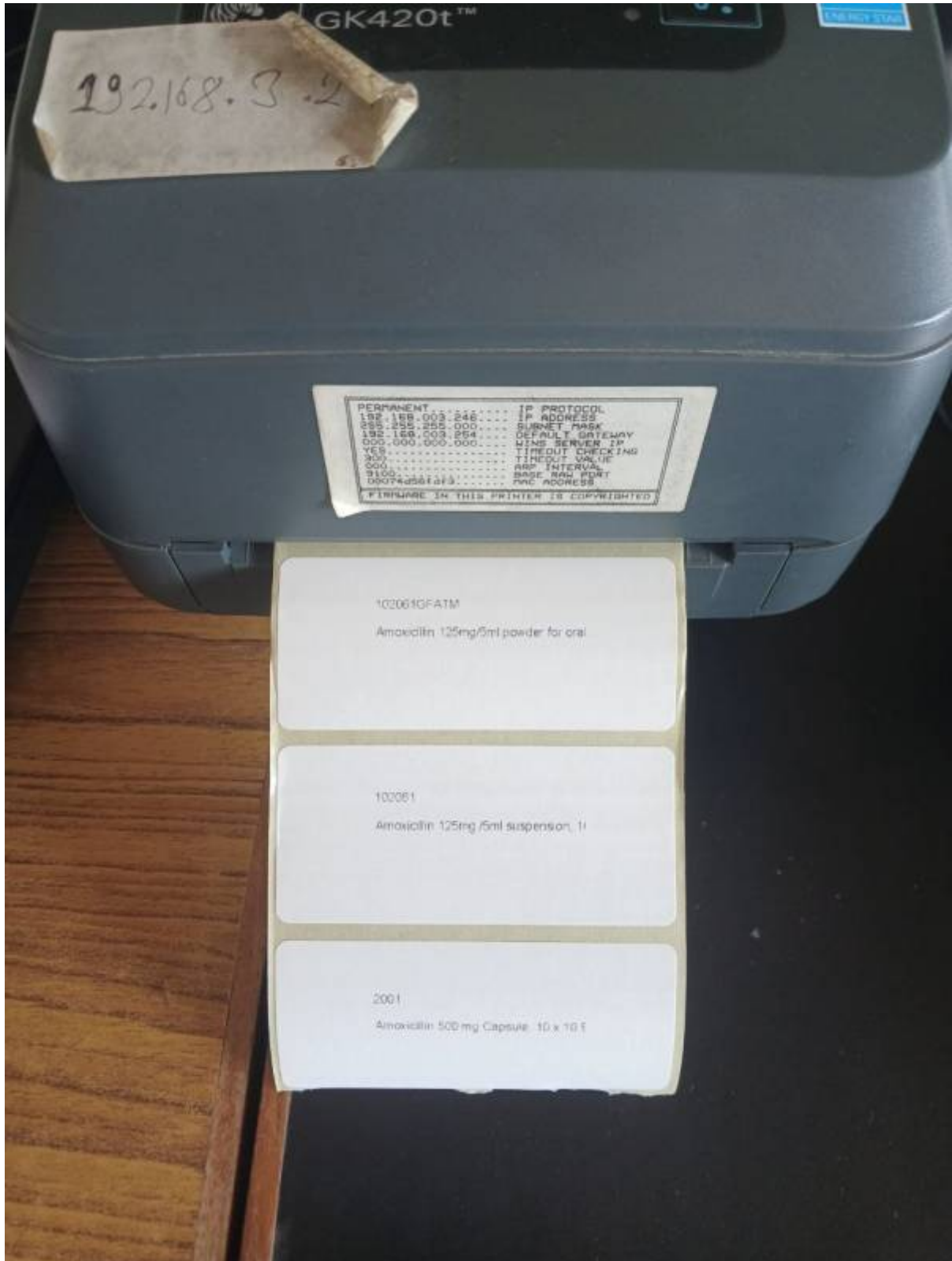
## Step 5: Print the labels

The designed report in `Step 4` can now be introduced to mSupply. The you can run the report : Report > item & Stock... > Item List ... from the mSupply menu.

- Choose the `Designed report` to print your labels.
- Print preview the report.
- Print and choose the label print in the printer dialog.



- Then Print



From:  
<https://docs.msupply.org.nz/> - mSupply documentation wiki

Permanent link:  
<https://docs.msupply.org.nz/faq:label-printer-via-windows-driver?rev=1783500862>

Last update: **2026/07/08 08:54**

