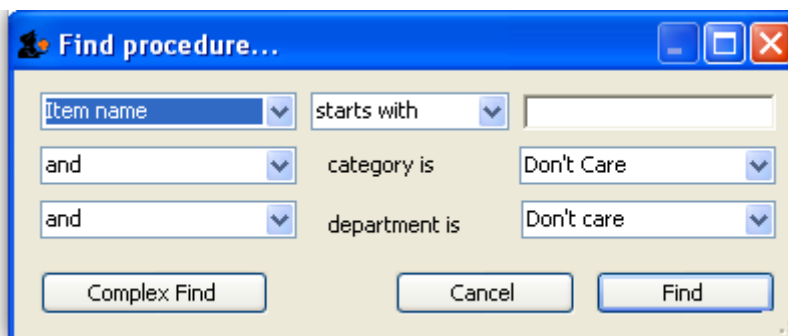


# Procedures

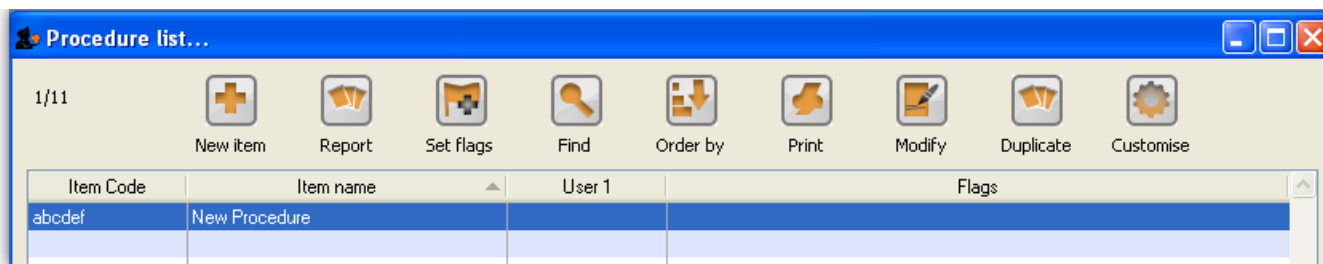
\*

<note>Internally, a procedure in HIS is treated like a service item in mSupply, so many of the same concepts apply - see [Items](#)</note>

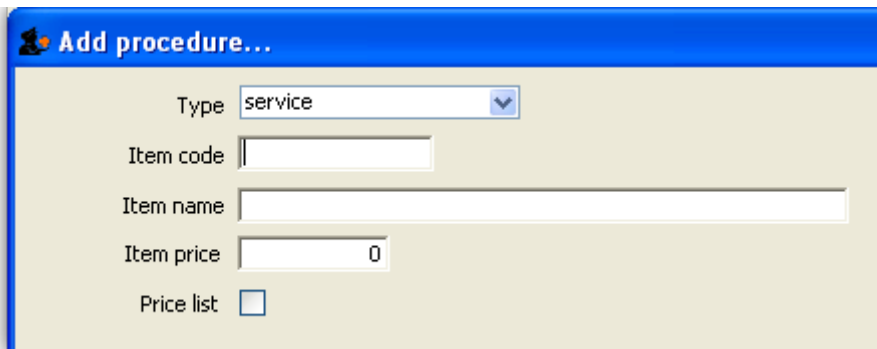
The **Special > Show procedures** menu item allows you to track surgical and other procedures performed on patients. It brings up the following window:



After setting the parameters, and clicking on OK, it will either show the list of procedures:



in which case, you can double-click on a procedure to view/edit it or select *New item* to create a new one. Or, if there are no existing procedures, it will go straight to the *Add procedure* window:



The type of a procedure is fixed as "service". As for items, once a procedure has been added, there are extra fields and tabs available. However, only a subset of the normal item fields are available.

The screenshot shows a software window titled "Procedure details...". On the left is a sidebar with a tree view containing "General", "Usage", "Ledger", "Notes", "Misc", and "Misc 2". The main area is titled "Item name New Procedure" and has a "Store:" dropdown menu set to "Hospital Info System".

The "General..." section contains:

- Item code: abcdef
- Category: None (dropdown menu)
- Item flag: [empty text box]
- Catalogue code: [empty text box]
- Hide in this store:

The "Pricing" section contains:

- Default margin: 0
- Default price: 2,000.00

The "Full description" section contains a large empty text area with scrollbars.

The "Custom fields..." section contains seven text boxes labeled user\_field\_1 through user\_field\_7, with checkboxes next to user\_field\_4, user\_field\_5, user\_field\_6, and user\_field\_7.

[Previous Topic: ICD10 disease codes](#) | [Next topic: Other lists](#)

<note>To continue to the next section of the mSupply® user guide click [here](#)</note>

From:

<https://docs.msupply.org.nz/> - **mSupply documentation wiki**

Permanent link:

<https://docs.msupply.org.nz/his:procedures?rev=1342023811>

Last update: **2012/07/11 16:23**

