

17.02. Importing stock

We strongly recommend:



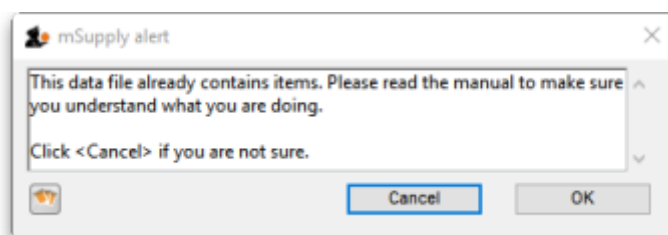
- * You take a backup of your datafile before attempting any imports.**
- * You test any import on a copy of your data before you do it on the real data.**

Don't say you haven't been warned



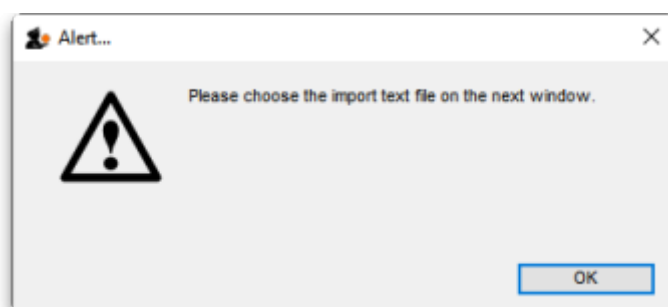
The Import stock function allows you to import stock into a store after the items have been created (manually or by using the item import function).

Choose *File > Import > Import stock* from the menus. You will be shown a warning:



This is telling you to take care! The stock you are importing will be imported on top of the stock you already have in the store you are currently logged into. If you are not sure what you are doing, stop and make sure!

After clicking the **OK** button you will be told the next step is to select the import file:



Click the **OK** button on this window and an operating system window will open for you to select the import file. Find the file and double-click on it or click on it and click the **Open** button.

This window will open:

Import item and stock

☐ First line contains column headers

☒ Remove quote characters on import

We recommend you have an up-to-date backup of your data file before attempting import. Click the cancel button below if you are not sure.

Preview

Previous Next Record number 1

Field	Value
Code	code
Item Name	item_name
Units	units
Pack size	pack_size
Quantity	quantity
Cost Price	cost_price
Sell Price	sell_price
Batch	batch
Expiry date	expiry_date
Description	description
Department	department
Location	location
Donor	

Cancel Import now

- **First line contains column headers checkbox:** Check this by clicking on it if the first line of your file contains the column headers. If this checkbox is checked, mSupply will ignore the first row of the import file and only import from the second row onwards.
- **Remove quote characters on import checkbox:** Check this if you want mSupply to remove quote (") characters from the various fields as it does the import. This is often needed if your import file has come from Excel or another spreadsheet application. You can check if there are unwanted quote characters in the fields using the preview **Next** and **Previous** buttons (see below).
- **Next and Previous buttons:** Use these to move through the rows in the import file. mSupply will show you the information is is going to import from each field in the import file. You will be shown a warning if you try to view lines before the start or after the end of the file.

If you spot any problems, click on the **Cancel** button, fix them and try again. If all is well, click on the **Import** button and mSupply will carry out the import. A progress bar will show you how far through the whole process mSupply is. When it gets to the end you will be shown a message telling you how many lines were imported successfully and how many were skipped (because the item could not be identified - because the item code was missing or did not match an item in your datafile).

Import file format

- The import file must be a tab delimited text file.
- The first row can contain the column titles but all other rows in the file should contain data to be imported.
- The table below details the fields you should have (and the order they must be in) in each row

of the file.

Column	Field	Description
1 (A)	Item code	Mandatory , Text, up to 18 characters. mSupply uses this to recognise which item this row of stock belongs to. If this code is missing or does not belong to an item already in your datafile, this line of the import file will be skipped.
2 (B)	Item name	Optional , ignored during the import. Text, up to 80 characters. The name of the item, here for reference so you can easily tell which item each row refers to.
3 (C)	Units	Optional , ignored during the import. Text up to 60 characters, for your reference only. The unit the item is to be measured in e.g. Tablet, Each, ml, g, bottle, vial, Ampoule.
4 (D)	Pack size	Mandatory , Integer. The number of units in a single pack for this stock line.
5 (E)	Quantity	Mandatory , Integer. The number of packs (containing the number of units in column 4) in this stock line. Equal to the total quantity if the Pack size is 1.
6 (F)	Cost price	Optional , Real number. The price you pay for one pack.
7 (G)	Sell price	Optional , Real number. The price the customers of this store pay for one pack. Set this to the same as the cost price or leave it empty if you do not actually sell the stock that you issue.
8 (H)	Batch	Optional , Text, Up to 20 characters. The batch of this stock line.
9 (I)	Expiry	Optional , Text, in short format (dd/mm/yy or mm/dd/yy, depending on the format set in your computer's operating system). The date this stock line will expire.
10 (J)	Description	Optional . Text, Up to 32,000 characters. The full description of the item. Be careful not to have any carriage return characters in the text though, or the import file will not be valid!
11 (K)	Item Department	Optional , Text, up to 30 characters. If you import a department name that doesn't exist, the department will be created.
12 (L)	Shelf Location	Optional , Text, Up to 60 characters. The code for the shelf location of this stock line. If the location does not exist, the location will be created as the stock is loaded. You can then edit the location details after the import.
13 (M)	Donor	Optional , Text, Up to 60 characters. The name of the donor of this stock line. If the donor doesn't exist, it will be created.
14 (N)	Custom stock field 5	Optional , Text. The value to be entered in custom stock field 5 for this batch. If the value doesn't already exist as an option for custom stock field 5 then it will be added. See the 7.05. Custom stock fields page for details of custom stock fields.
15 (O)	Outer pack size	Optional , Integer. The number of packs that fit in a carton (NOT the number of units in a carton!).
16 (P)	Volume per pack	Optional , Decimal number. The volume that a single pack of this batch occupies on the shelf in m ³ .
17 (Q)	Weight per pack	Optional , Decimal number. The weight of a single pack of this batch in kg.



Please note: It is not part of the import file but, if an item's default Volume per pack is set (see the **Volume per pack** field on the [4.01.02. Items - Storage tab](#) page for details) then this will be applied to the stock line's volume per pack. The value will be



proportionately increased or decreased if the stock line's pack size differs from the item's default pack size (**Preferred pack size** field on the [4.01.02. Items - Storage tab](#) page).

[Here is a blank spreadsheet you can use with the right columns:](#)

msupply_stock_import.xlsx

Note: the first row of data in red is an example row - delete it before you import it!

You can create the import file in various ways:

1. Manually using the blank template above.
2. Manually using any text editor.
3. Export the current stock from a store in this or another mSupply datafile (and modify it if necessary) and import that.

If you use a spreadsheet application like Excel remember to export the file in Tab delimited text format before trying to import it into mSupply.

You can import as many batches of an item as you wish, there is no limit. And it doesn't matter whether batches of the same item are next to each other in the import file.

Previous: [17.01. Importing items](#) | | Next: [17.03. Importing names](#)

From:
<https://docs.ms supply.org.nz/> - mSupply documentation wiki

Permanent link:
https://docs.ms supply.org.nz/import_and_export:import_items_and_stock?rev=1682046655

Last update: **2023/04/21 03:10**

