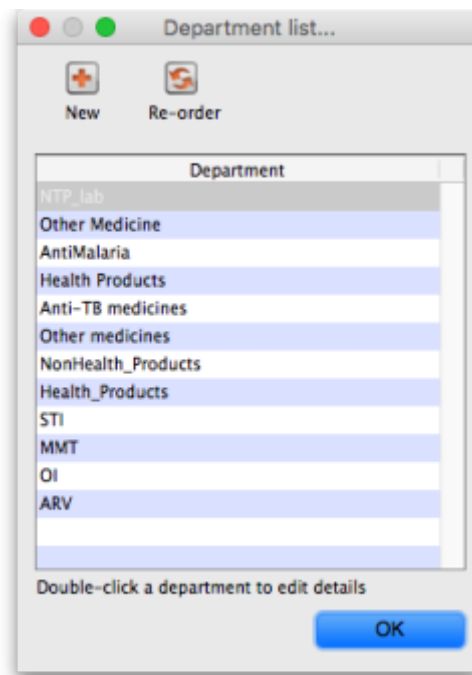


Managing Item Access...

*

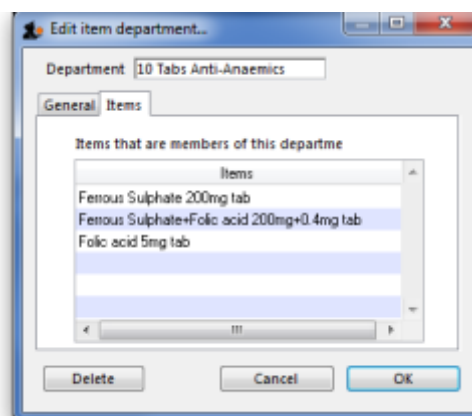
Choosing **Show departments** from the **Item** menu displays the **Edit departments...** window, where you are able to create and edit item departments. Once you have created departments the window might appear something like this, and you are now ready to assign each item to a department:



Item departments are a bit complicated. Here's what you need to remember:

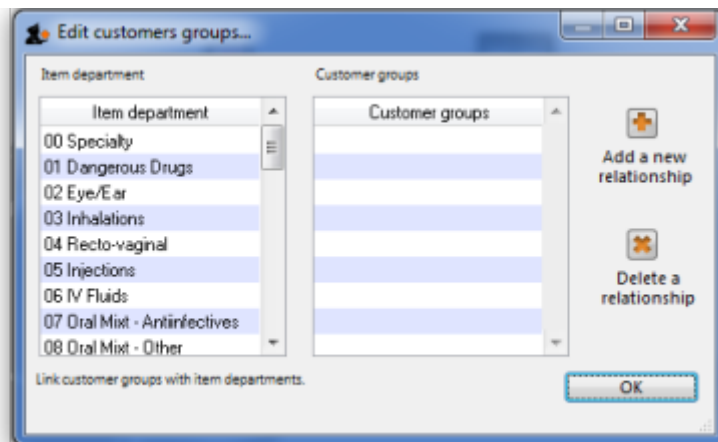
- Each customer is a member of one group.
- Each item is a member of one department.

Taking as an example the group **Anti anaemic tablets**, the items in the group are shown by clicking **Show item departments** . on the **Item** menu, and then double clicking on the appropriate group:

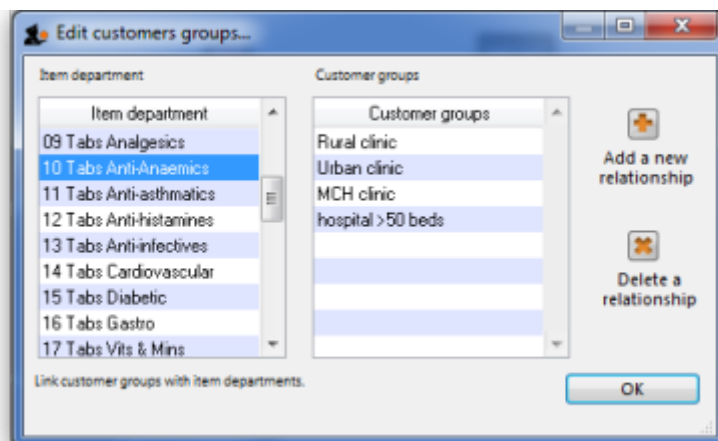


- Each group can have any number and combination of item groups in it.
- When you attempt to issue stock to a customer whose group does not contain the department

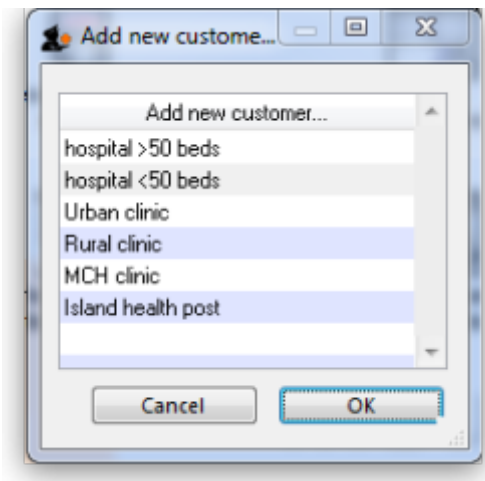
of the item you are issuing, either a warning will be displayed or mSupply® will not allow you to issue the stock. From the **Item** menu, choose **Manage item access...**, and this window is displayed:



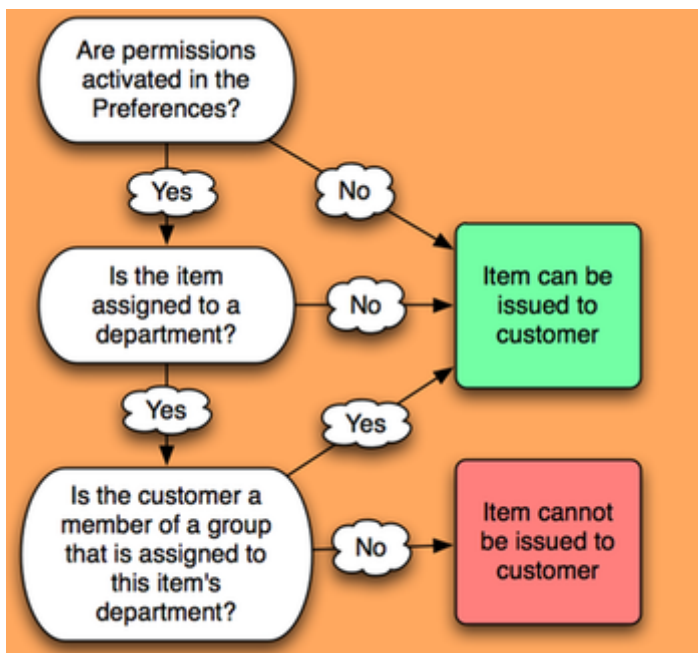
- The left hand list shows the available departments
- The right hand list shows the customer groups that are presently members of the department which is highlighted on the left hand side.



- The example shown identifies the four customer groups which are linked to the Anti-anaemic item department
- The icons on the right side allow you to add and/or remove groups from the highlighted department. Clicking the **Add a new relationship** button shows a list of groups you can add.
- Double-click (or click and then click OK) to add a group to the current department. You will be given a warning if you try to add the same group twice.



- Depending on how the item department options are configured, attempting to issue an item to a customer whose group is not a member of that department will either result in a warning message or in mSupply refusing to issue the stock.
- Note that the option must be turned on in the *Preferences* under the *Invoices2* tab before this option will have any effect.
- Here is a summary of how department groups affect whether or not an item can be issued.

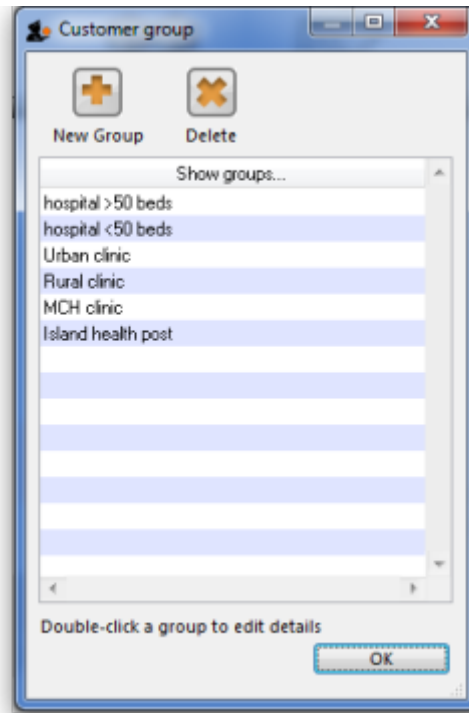


Show groups...

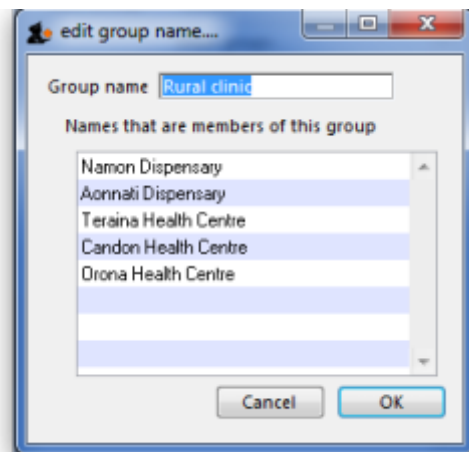
Customer groups can be used to group customers (or suppliers) together for reporting purposes, and also to set up an item restrictions scheme, allowing some items to be issued only to certain customers.

See the explanation of how to set up a restriction scheme by clicking [here](#).

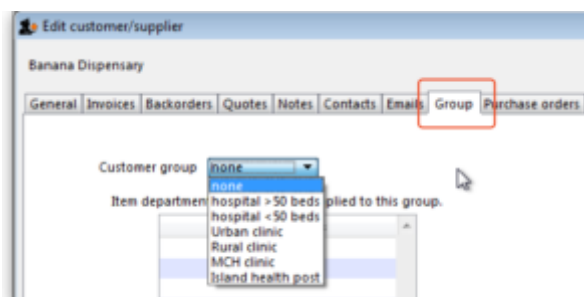
The groups window allows you to set up group names:



- Click the **New group** button to add a new group.
- Double-click an entry to edit its name:



- You can enter or edit the group name in the top field.
- The list displays all names which are members of this group.
- Click the **Delete** button to delete a group. You can only delete groups that have no names as members. You can remove group members from the **Groups** tab of the name viewing window (From the **Customer** menu, choose **Show Customers** and find the required customer in the usual way.)

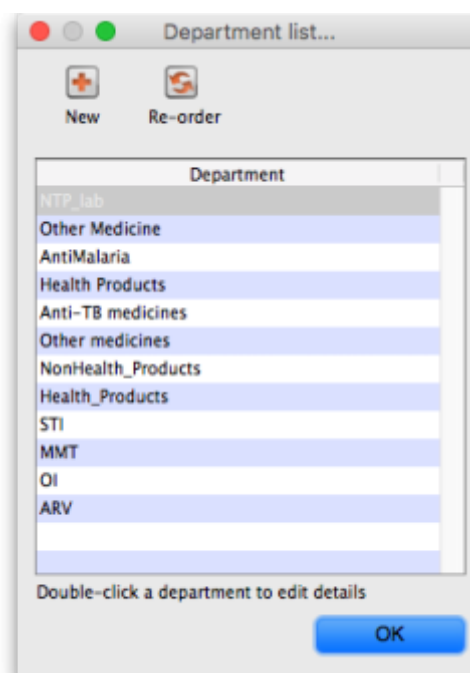


- The drop down list displays the group to which this customer belongs, and to remove the customer, make sure **none** is selected from the drop down list; to assign the customer to a different group, highlight the new group in the drop down list.
- Click **OK** to leave the window.

Departments

Overview: A manufacturer might create departments for raw materials, packing materials, and quality control reagents. A drug store or hospital might create departments according to dose form or according to pharmacological classification, etc.

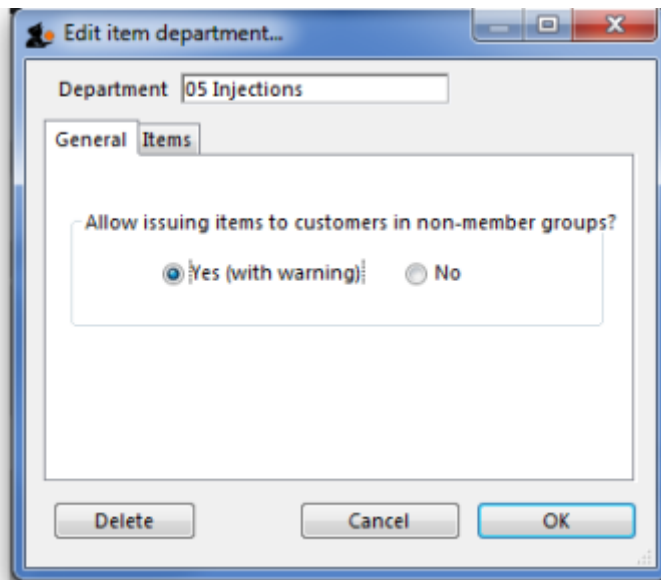
From the **Item** menu, choose **Show departments ...**; you are shown a list of departments:



By default the list displays in alphabetic order; clicking on **Departments** toggles between alphabetic order and reverse alphabetic order; you may also drag and drop individual departments to any position in the list to suit your own requirements, and on clicking OK you will be asked whether or not you wish to save the list in the order you have specified.

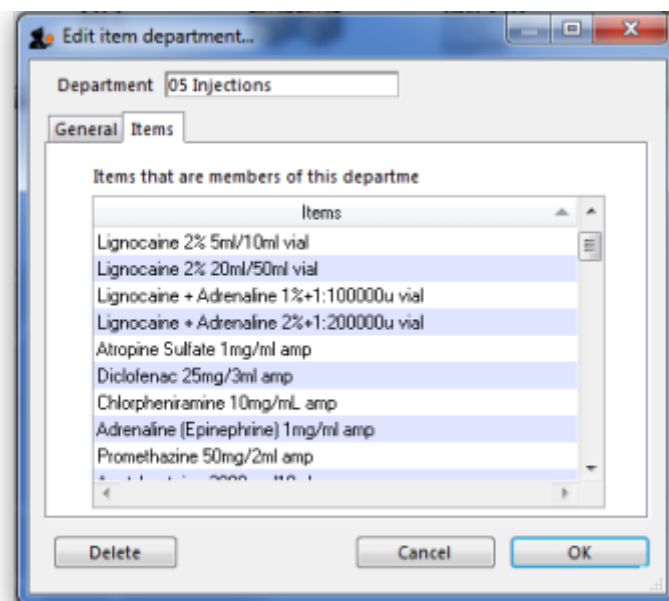
To add a new department, click the **New dept** button.

To edit a department, double-click the department you want to edit. You are shown a window allowing you to edit the department name:



The radio buttons allow you to choose what will happen when you attempt to issue an item to a customer who is not a member of a linked group. Either the user can be warned or the issue can be disallowed. This only applies if you have **Activate restricted item access by customer group** turned on in the Preferences - otherwise you can ignore this setting.

The **Items** tab displays a list of items that are members of the group you are viewing:



To delete a department

Double-click it to display the entry window, then click the **Delete** button. Note that you can not delete a department that has item members. You will be warned if you try to do this. To delete a department with Items, click the items tab and note the items that are members, then edit those items (using the **Items > Show items ...** menu command) and set their departments to either none or a different department. You will then be able to delete the department.

Previous: [Managing drug interaction groups](#) Next: [Prices in mSupply](#)

From:

<https://docs.msupply.org.nz/> - mSupply documentation wiki

Permanent link:

https://docs.msupply.org.nz/items:department_management?rev=1343995449

Last update: **2012/08/03 12:04**

