

22.12. Asset management

mSupply allows you to manage assets you may have in your facility such as computers and vehicles.



In order to use this function users will need to have assets enabled in page 3 of permissions. See [Managing users](#)

The functionality allows you to record

- The location of the asset
- It's current condition
- A unique ID you've given it (e.g. the license plate if a vehicle, or the serial number of a computer)

Showing the Asset list

Choose **Special > Show Assets**

Serial	Description	Location	Type	Status	Condition	Note
	Facsimile - Sharp FD-P610	CMS		In use/oper	Working	
3026980481315	Filing cabinet	CMS		In use/oper	Working	
	Filing cabinet (copy)	CMS		In use/oper	Working	
	Filing cabinet (copy) 2	CMS		In use/oper	Working	
7114127	Finger print machine with colour (black and grey)	CMS		In use/oper	Working	
OC1A	Oxygen Cylinder			Full		
0605083259	Phone, white extension (ext 152)	CMS		In use/oper	Working	
8397769	Photocopier - Sharp AR-M207	CMS		In use/oper	Working	
41J091301236	Thermal printer - Zebra TLP 2844	CMS		In use/oper	Working	
Registration - G 661	Truck - Kia Bongo	CMS		In use/oper	Working	
Registration - G 942	Truck - Toyota	CMS		In use/oper	Working	
Total shown: 11						

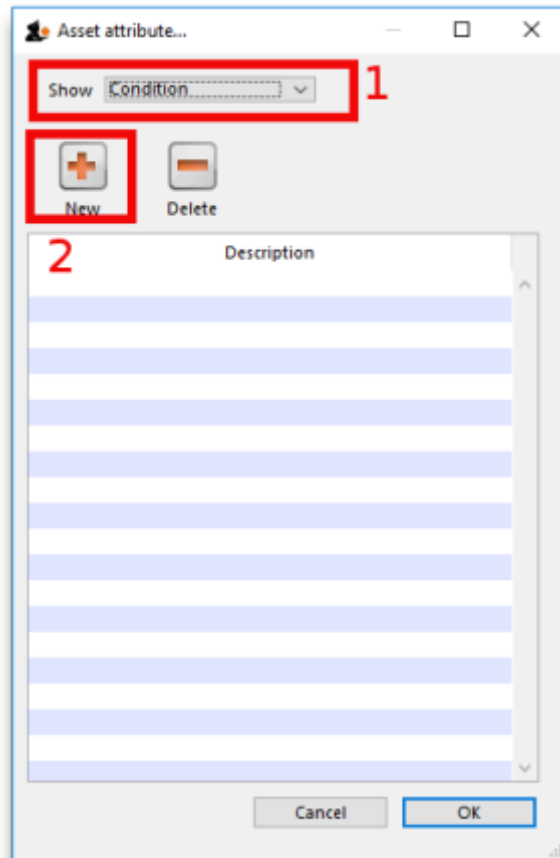
Setup

Before starting to track your items you may need to set up the kinds of data you are tracking. For instance. If you are tracking Oxygen cylinders you may want to keep records of whether they are full or empty. To do this we would set up a "Status" field.

To do this click on **Setup**



A new window will open:



To setup tracking for our oxygen cylinders we would choose "Status" at the top field (1). Then click "New" (2). Type in Full and click OK. Repeat the process for "Empty"

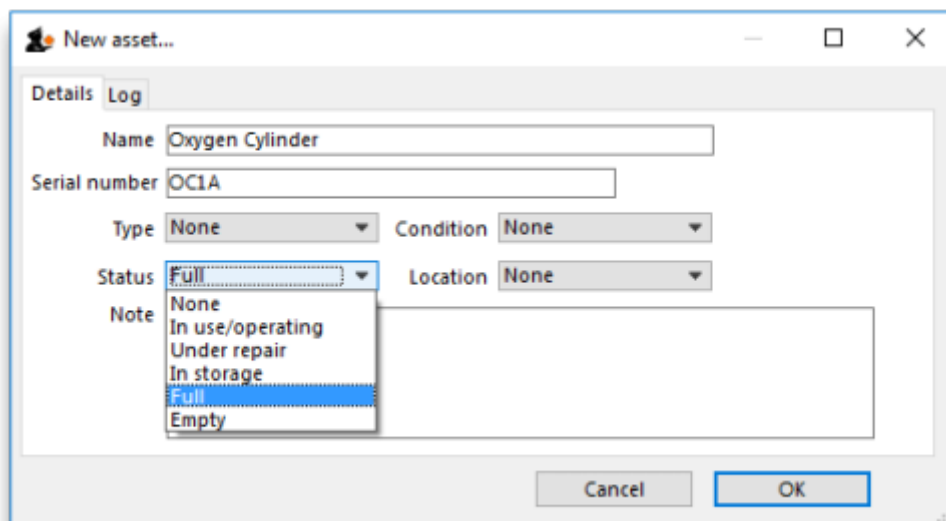
Now you have two statuses set up that can be linked to an asset.



Let's create an asset to track.

New

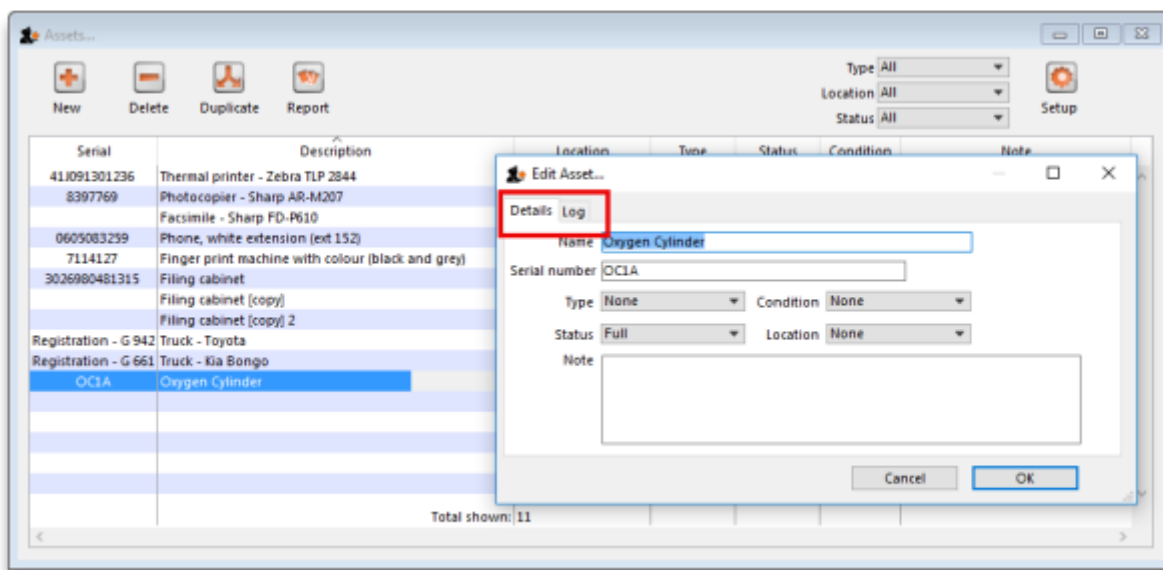
Clicking **New** Opens a window allowing you to enter new assets:



In this example I have created the Asset: Oxygen Cylinder. I have recorded its serial number and I have chosen the Status: Full.

Editing an Asset

If you want to change one of the Conditions, Type, Status or Location of an asset you can do so by double clicking the asset from the Show Assets window.



You can switch between the **Details** and **Log** tabs to either edit the fields or view the log for this asset.

Previous: [FrontlineSMS Integration](#) Next: [ARV regimen data recording](#)

From: <https://docs.msupply.org.nz/> - **mSupply documentation wiki**

Permanent link: https://docs.msupply.org.nz/other_stuff:assets?rev=1571233099

Last update: **2019/10/16 13:38**

