

# 25.15. Product (drug) registration

## Introduction

The process by which a governing authority controls which products can be supplied in a country is called registration. The process involves keeping a register of the products that are allowed to be supplied by particular suppliers. Each supplier must:

- Obtain a supplier registration number and
- Obtain a registration for each product they wish to supply. This registration will be per brand and dose form, and will usually be time-bound and need renewal.

A critical part of the process is supplying documents to verify product quality. The functionality in mSupply is all about recording and tracking the status of suppliers' registrations and storing the documentation for easy retrieval.

## Getting started with the Registration module

### Activate the Registration module

Before using the Registration module you will need to activate it in the Drug registration tab of the [General Preferences](#).

### Making the Registration module visible

mSupply treats the Registration module like a store (see [Virtual stores](#)). A user won't be able to log in to a virtual store on the login window unless they have permission to do so (see [Managing users](#)). You will need to allow the users who are going to do the registration work to see the Registration Module 'store'.

### Making things visible in the Registration module 'store'

When a new store is created, no existing items or names (suppliers, manufacturers, customers, etc.) are visible in it. This clearly needs to be fixed if you are going to register existing items, suppliers, or manufacturers!



Any items, suppliers and manufacturers created after the Registration module 'store' has been created will be automatically made visible in the Registration module 'store'.

## Make existing suppliers and manufacturers visible

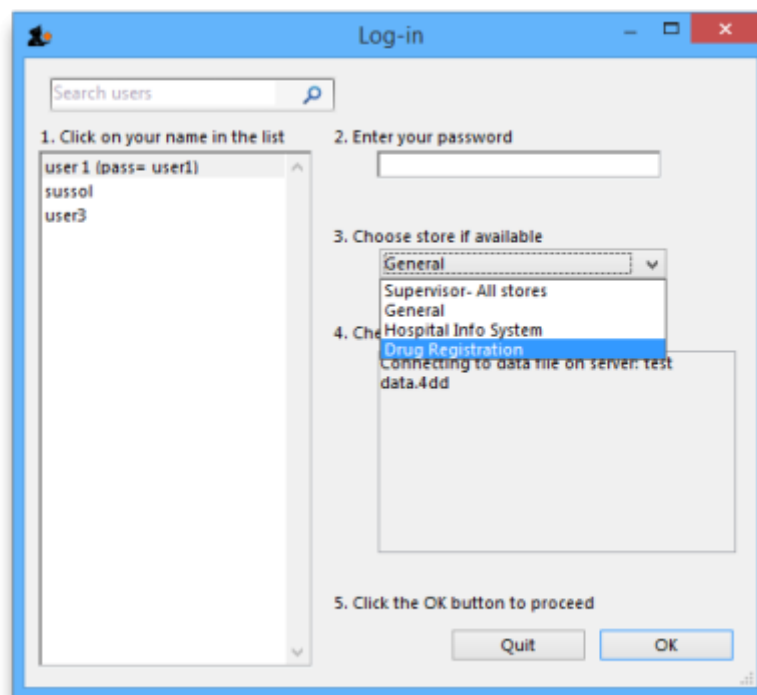
To make existing suppliers and manufacturers visible, you need to make them visible in the Registration module 'store' - refer [Names: Using, adding and editing, the Store tab](#).

## Make existing items visible

To make existing suppliers and manufacturers visible, you need to make them visible in the Registration module 'store' - refer [Items, the Stores tab](#). This must be done while logged in to another store.

## Using the Registration module

The Registration module has its own Navigator. If mSupply doesn't start in Registration mode when you log in you may switch to it by choosing *File > Switch...* and selecting Registration:



You will then be presented with the Navigator for Registration:



### Show (list) registrations

To see a list of registrations click on the List button:



This will open the filter window to allow you to refine your search. The filters all work in the normal way so, if you want to list all registrations, do not enter anything in the filters:

Find Registrations whose

Expiry date is on or b...

and

Supplier Name starts with

and

Item code starts with

and VEN Category Don't Care

and category 1 is Don't Care

and category 2 is Don't Care

and category 3 is

and category 4 is

and Status is Don't Care

Cancel Find

Clicking the *Find* button will display a list of all the registrations that match your search criteria:

Item Name	Supplier	Status	Application number	Registration number	Trade name	Is registered	Registration expiry
Test_item	Test Drug Reg		1	1	guardian	<input type="checkbox"/>	
Co-trimoxazole [Septrin] 40mg/...	Academy Chemic...		6	6	Test trimoxazole	<input checked="" type="checkbox"/>	3/5
ABC 300mg, tablet	Access Spectrum		3	3	Natural ABC	<input checked="" type="checkbox"/>	12/0
Fendona 10kg	Hetero Labs Limi...		4	4	Hetero Fendona	<input type="checkbox"/>	
Levofloxacin, 1g	Alere Medical Co...		5	5	Alere Levofloxacin	<input type="checkbox"/>	
Diclofenac sodium 50mg, tablet	FIND		7	7	DH Diclofenac	<input type="checkbox"/>	
Artesunate injection 60 mg	Nanova Co.Ltd		8	8	Artesunate	<input type="checkbox"/>	
Ball bearing for plug fan motor	Drug Registration		9	9	Ball AHF	<input type="checkbox"/>	4/0
NMCP Future item 2	Waimaw Townsh...		10	10	Manufacturer	<input checked="" type="checkbox"/>	12/0
Cefixime 100mg, tablet	Indaw township	Refused	11	11	fireg	<input type="checkbox"/>	
Rack with lid for 1-2ml Cryo vial	Drug Registration		12	12		<input type="checkbox"/>	
Lab requisition form	Lanmadaw Town...		13	13	labreq	<input type="checkbox"/>	
ABBOTT EID m2000 Reagent Kit...	Hitiin Township		14	14		<input checked="" type="checkbox"/>	7/0
Hand Compression Sprayer Ca...	Bago MMA	Waiting for docume...	15	15	higy	<input checked="" type="checkbox"/>	4/0
Water for injection 5ml, bottle	Indaw Township		16	16	jubilee	<input type="checkbox"/>	
Zilprenium	Zegong Township		17	17	asd	<input type="checkbox"/>	
Zilprenium	Zabbuthiri Town...		18	18	jsd	<input type="checkbox"/>	
Quinine DHCL, Inj 300mg/ml,2ml	Waw Township		19	19	gdfdg	<input type="checkbox"/>	
Laboratory Coat, Medium	Tabayin Township		20	20	ddfgd	<input type="checkbox"/>	
Water for injection 5ml, bottle	Waibargi Towns...		21	21		<input type="checkbox"/>	
Gene Xpert Machine (4 modules)	JICA		22	22		<input type="checkbox"/>	
ABC 300mg, tablet	Alere Medical Co...		23	23		<input type="checkbox"/>	
Electronic Pipette Boy	Access Spectrum		24	24		<input type="checkbox"/>	

### New

This will allow you to enter new registrations. See the section [New Registration](#).

### Delete

You may remove registrations by highlighting an item on this list and clicking the delete button.

### Find

This allows you to refine your search without having to go back to the previous window.

### View / edit registration

To view and edit the details of a registration, **double click** it in the list and it will bring up a window where you can view and edit the details:



### New registration



To enter a new drug registration record, click on

This will open the following window where data can be entered in fields as described below:



## Manufacturer

As above enter the first letter of the manufacturer, press Tab, and select from the displayed list. If the manufacturer is not displayed a new record for the manufacturer will need to be created by clicking on the New Manufacturer button.

## Trade name

As trade names for drugs vary widely this is a field to fill out manually.

## Currently registered

If this item has been approved for registration then tick this box. The approval date will change to today's date once the window has been closed.

## Status

You can assign a drug registration a status you have previously defined in the Drug Registration status window

## Documents

You may attach documents to the registration record by clicking the plus button. This will open a window to allow you to navigate to and choose a locally stored document. To view documents stored in this way simply double click the document listed below.

## Logs

The log tab allows you to see a list of events such as when this item was approved.

## Show (list) suppliers

See [Show Suppliers](#)



## New supplier

See [Names: using, adding and editing](#)



## Show / new manufacturers

The process for viewing or adding a new manufacturer is the same as the process for viewing/adding a supplier - refer to the instructions above.

## Reports



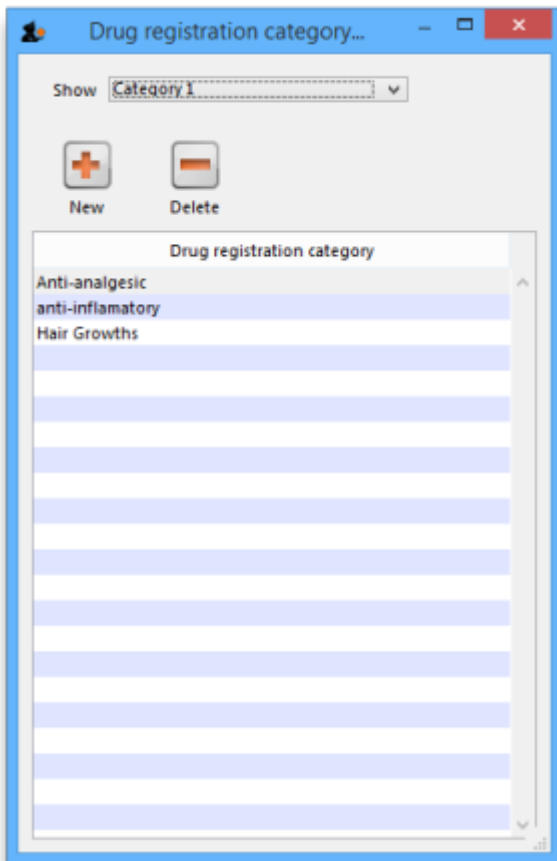
Clicking on Registrations will open a report listing all of your registration records.

## Registration categories

Item categories are a great way of grouping your items. This enables you, for example, to report on specific groups of products by filtering by category. This can be extremely helpful.



To create a new category click on the Cat. This will open this window:



### View registrations in category

- To view a list of registrations assigned to each category **double click** on the category in the list.

### New

- Click the **New** button to add a new category.

### Delete

- Click the **Delete** button to remove a category.



If there are registrations assigned to a category, then mSupply will not let you delete the category until you have removed the category from the *drug registration records*. mSupply will open the category so that you can see the Registration records that are assigned to this category.





### Edit a status

To edit a status, double-click on it. You can change its name or identifying color. The drug registrations that have been assigned this status will be affected by the change.



### Add a new status

\* Click the **New** button to add a new status.

## Delete a status

\* Click the **Delete** button to remove a status.



If this status has been assigned to registrations, then mSupply will not let you delete the status until you have removed the status from the *drug registration records*. mSupply will tell you how many drug registrations have been assigned this status.

Previous: [arvregimendatarecording](#) | | Next: [26.13. Using the mSupply remote client](#)

From:

<https://docs.msupply.org.nz/> - **mSupply documentation wiki**

Permanent link:

[https://docs.msupply.org.nz/other\\_stuff:registration?rev=1617202306](https://docs.msupply.org.nz/other_stuff:registration?rev=1617202306)

Last update: **2021/03/31 14:51**

