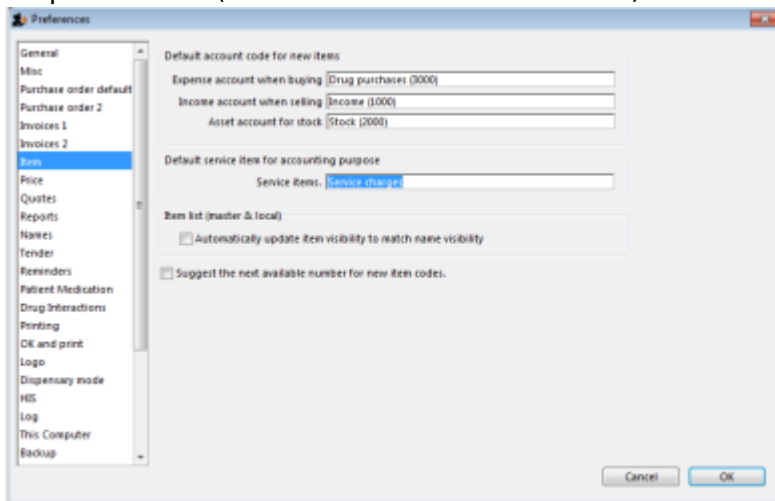


Assigning item codes automatically

- If you want item codes to be assigned automatically, check the checkbox on the items tab of the preferences (**File > Preferences > Items**)



-
- end

From:

<https://docs.msupply.org.nz/> - mSupply documentation wiki

Permanent link:

<https://docs.msupply.org.nz/preferences:items?rev=1302609060>

Last update: **2011/04/12 11:51**

