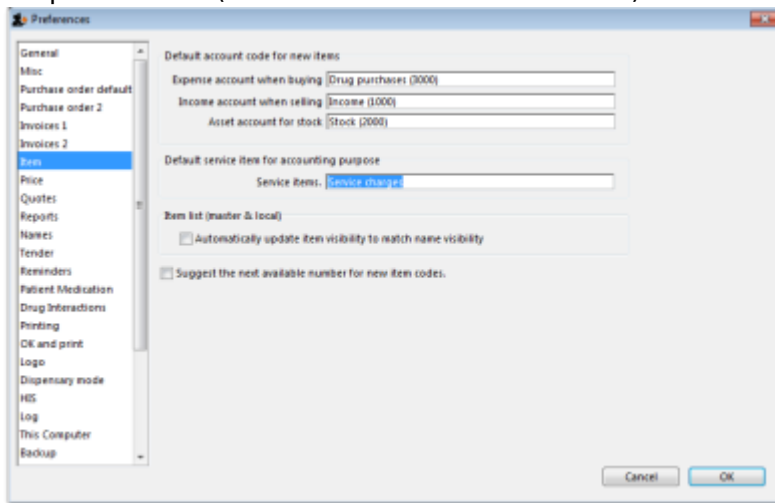


# Assigning item codes automatically

- If you want item codes to be assigned automatically, check the checkbox on the items tab of the preferences (**File > Preferences > Items** )



\*

From:

<https://docs.msupply.org.nz/> - mSupply documentation wiki

Permanent link:

<https://docs.msupply.org.nz/preferences:items?rev=1307076984>

Last update: 2011/06/03 04:56

