

## 15.10. Options (standard reasons)

You can create a list of options (or reasons) for the user to select from when they use perform certain actions in mSupply (in drop down lists etc.). Options are an alternative to the user typing free text, and can help standardise information being recorded in mSupply.

You can enter options for:

- **Requisition Line Variance:** Reasons for a variation between the suggested quantity and entered quantity in a requisition line.
- **Positive Inventory Adjustment:** Reasons for a positive adjustment between the snapshot quantity and entered quantity in a stocktake line (to help answer the question *why is there more stock than expected?*).
- **Negative Inventory Adjustment:** Reasons for a negative adjustment between the snapshot quantity and entered quantity in a stocktake line (to help answer the question *why is there less stock than expected?*).
- **New Cash Out Transaction:** Reasons for a cash out transaction.

### Creating options

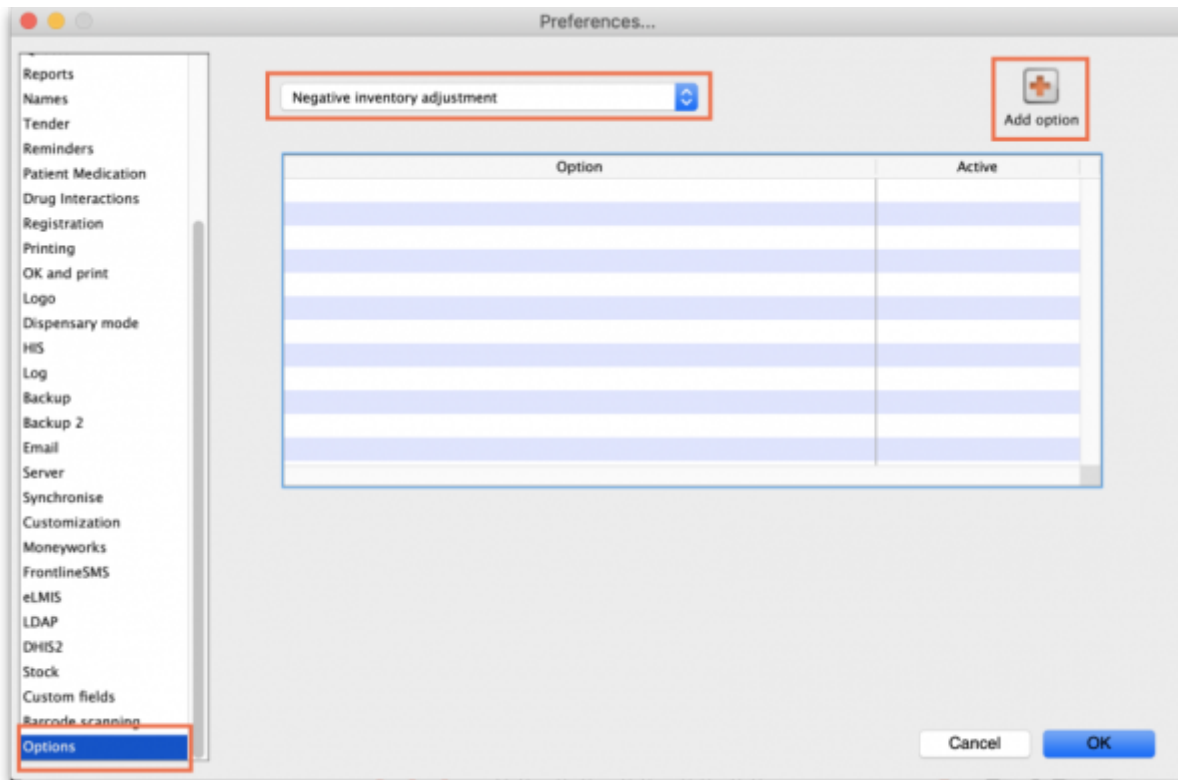


In a sync system, Options must be added on the **central server** and will then sync to other sites.

1. Go to the **Admin** tab on the Navigator and click the **Preferences** button:

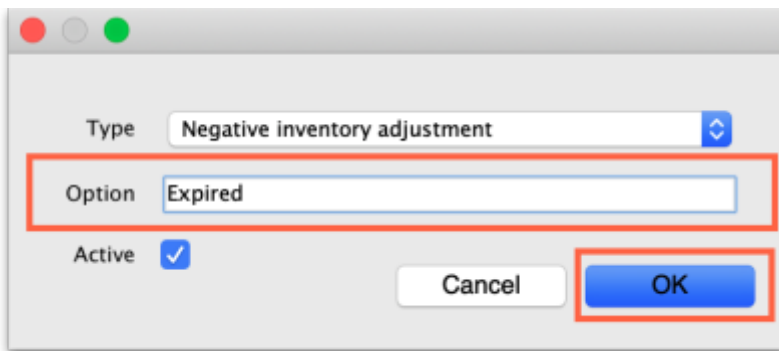


2. Click on the *Options* tab in the list on the left hand side to see this page:




3. Select the transaction type requiring options from the dropdown list at the top. When you do that, the table will show all the existing options for that type.

4. Click the **Add Option** button and this window will open:



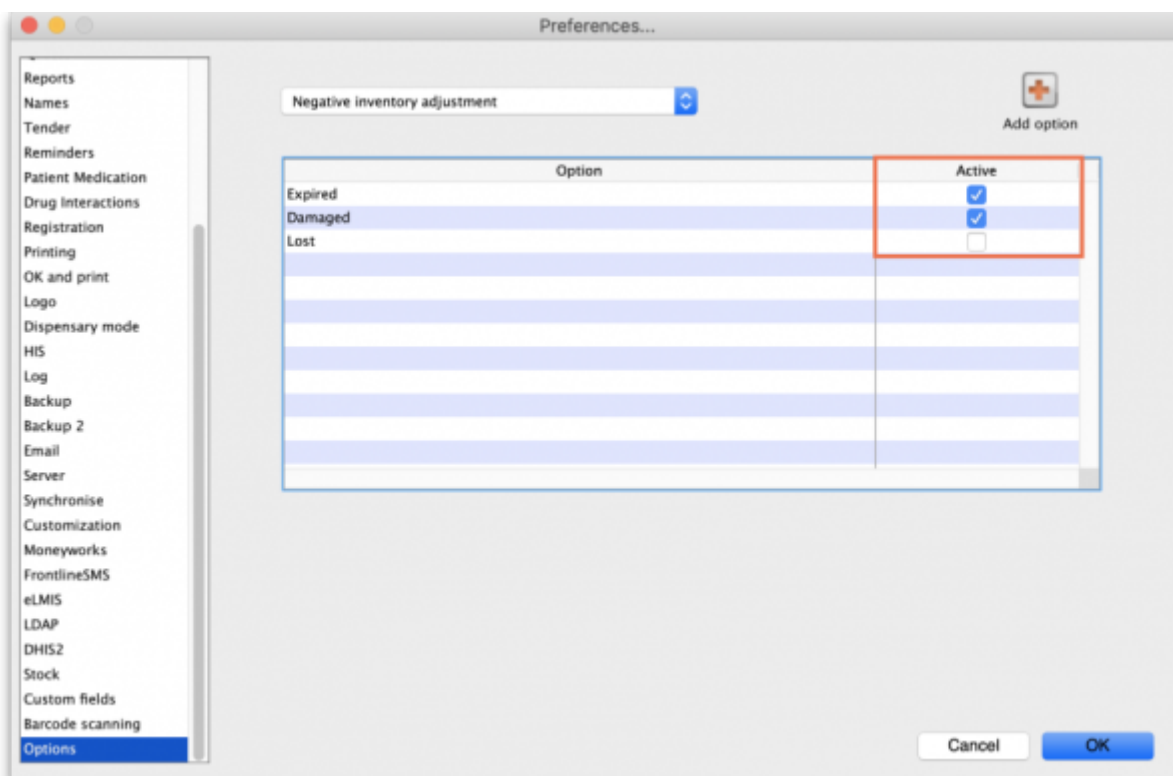
5. Enter a name for the option in the **Option** field, then click on the **OK** button to save it.

 **Once an option is saved, it *cannot* be deleted.** Check carefully before pressing OK! If you need to prevent an option being available for selection by users then make it inactive. This will mean old options can be displayed correctly in historical records but they are no longer available for use by users.

All options in use have the **Active** box ticked and will now appear for selection in the given transaction type.

If an option is no longer in use, find it in the list, double-click on it and uncheck the **Active** checkbox. This will remove it from the list of options available for a user to select.

This is what the list looks like with some active and some inactive options:



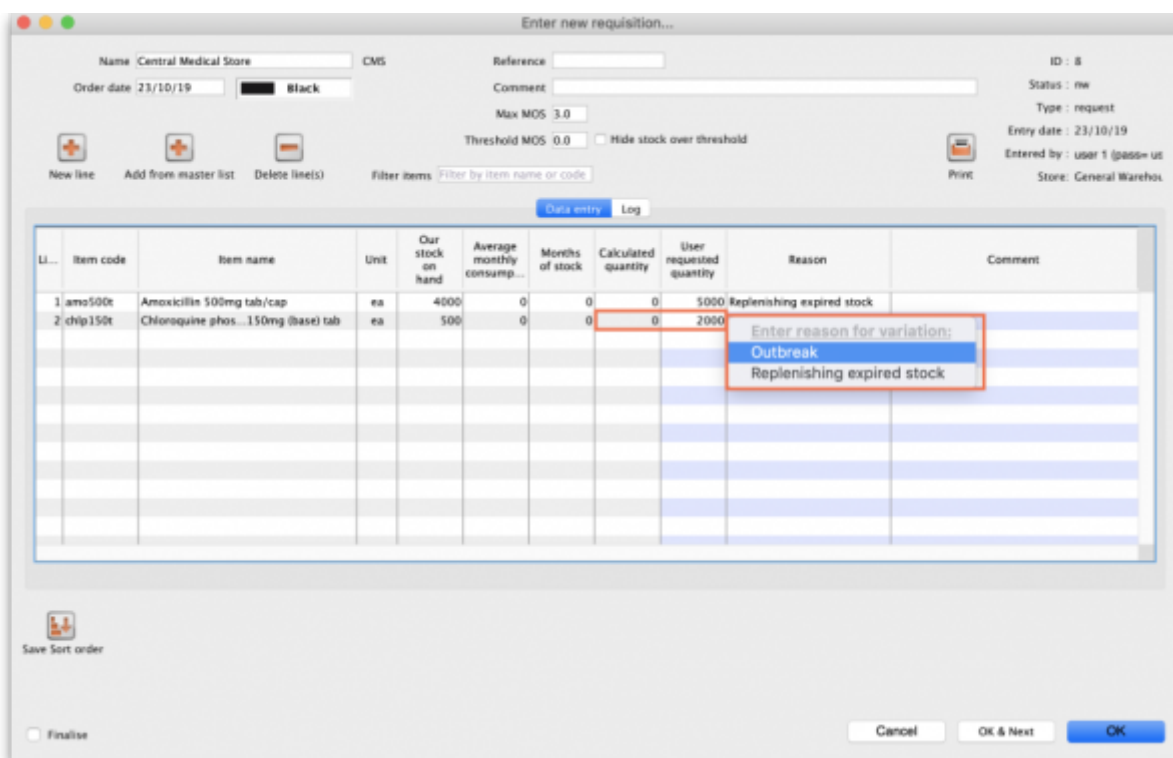
## Using options

This section shows how options appear in each transaction type after they are created.

### Requisition line variance

This type appears when creating a [Requisition](#).

If there are any active options of this type, when a user enters a **User Requested Quantity** that is different from the **Calculated Quantity**, the list of active *Requisition line variance* options automatically appears in the **Reason** column and one must be selected:



### Positive or negative inventory adjustment

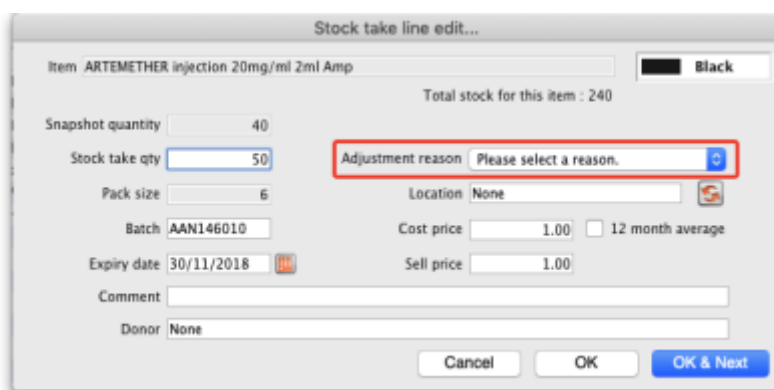
When any active options of these two types are available, they are used in a stocktake (see the [4.17. Stocktakes](#) page) or when manually creating inventory adjustments (see [4.19. Inventory adjustments](#)).

### Stocktakes

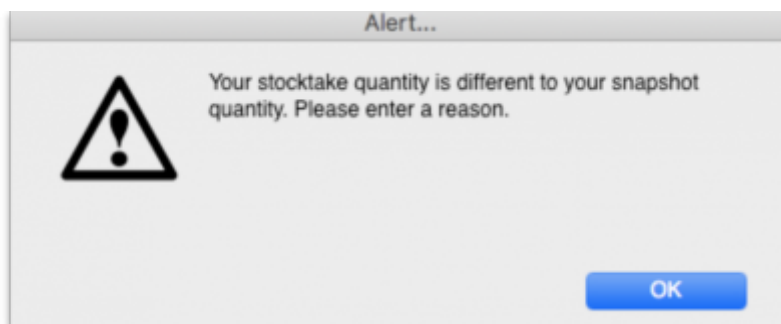
In the main stocktake window, if the **Enter Quantity** value is adjusted to be different from the **Snapshot Quantity** value like this, for example:



then the edit stocktake line edit window is automatically opened and you must select an option from the **Adjustment reason** drop down list:



If you click on the OK button before selecting a reason you'll be prompted to choose one:



Of course, the same is true if you double-click on a line in the main stocktake window and edit the **Stock take qty** value to be different from the **Snapshot Quantity** in the stock take line edit window; you must select a reason from the **Adjustment reason** drop down list before you can proceed.

If the *Counted quantity* is greater than the **Snapshot quantity** the **Adjustment reason** drop down list is populated with *Positive inventory adjustment* options, if it is smaller then it will be populated with *Negative inventory adjustment* options.

### New cash out transaction

When creating a new cash out transaction (see the [Cash Out](#) section for details), if there are any

active *New cash out transaction* type options then you must select a reason from the **Option** dropdown list that is displayed in the window:

The screenshot shows a window titled "Add cash transaction". It has several input fields: "Invoice Number" (1), "Entered by" (Admin), "Entry date" (18/07/19), and "Confirm date" (empty). There is a "Copy ID to Clipboard" button. The "Name" field contains "Alders Store" and "ALD" below it. The "Transaction type" dropdown is set to "Cash out". The "Amount" field is empty. The "Option" dropdown is highlighted with a red box and shows "Refund". The "Description" field is empty. At the bottom, there is a "New cash register balance: USD" field showing "0" and "Cancel" and "OK" buttons.

## Payment type

When creating a **Prescription in a dispensary where you receive payments:**

An option must be selected from the **Payment Type** dropdown list when confirming the payment.

The screenshot shows a 'Prescription Entry' window with the following sections:

- Patient details:** Name: Patient, Test; Date of birth: 23/11/1974; Female: ; Store: AKPESSEKRO (CSR-D PUBLIC); Entered: 04/06/2020; Invoice: 431; Entered by: Susael.
- Other details:** A message states 'This invoice will be automatically finalised if a payment is entered.' Below this are fields for 'Cheque #' and 'Note'.
- To Pay:** Invoice total: 300.00; Total to pay: 300.
- Patient's credit status:** Current balance: 100.00; Credit limit: 100.00; Available credit: 100.00.
- Payment details:** Amount paid by credit: 50.00; Amount paid by patient: 250.00; Total payment: 250; Amount given: 0; Change to give back: 0.

A red box highlights the 'Select the payment type' dropdown menu in the 'Payment details' section. At the bottom, there are buttons for 'Finalise', 'Export batch: 0', 'Status: on', 'Print receipt', 'OK & Next', 'Delete', and 'OK'.

Previous: [16.09. Barcode scanning preferences](#) | | Next: [16.11. Custom fields](#)

From: <https://docs.msupply.org.nz/> - mSupply documentation wiki

Permanent link: <https://docs.msupply.org.nz/preferences:options?rev=1591955647>

Last update: 2020/06/12 09:54

