

## 13.03. Transaction reports

Transaction based reports are accessed by choosing the **Report > Transactions...** menu item or by clicking on the Transactions item in the Transactions section on the Reports tab of the Navigator:

All these reports (and there are many!) summarise supplier or customer transactions in many different formats. Many different filters have been incorporated, allowing filtering on transactions, names, prescribers, items, categories and departments. The filters that do not apply to different reports are hidden as required. Feel free to mix and match and experiment with the filters and different reports to see the different views of information that you can get.

The basic sequence for creating a transaction report is this:

1. Select the type of report you want from the *Type of report* list in the top left.
2. Select the date range of transactions you want included in the report in the *Date range* section.
3. Select the transaction type you want the report to run over in the *Transaction type* section.
4. Set any other filters/settings you need to refine the contents of the report (Transaction category, Name, Item, Stock, Prescriber filter etc. sections).
5. Click on the **OK** button to run the report - you can select whether you export it to Excel or print it in the next window that opens (well, mostly - some reports are exported to Excel only so you won't have a choice for them).

See below for more in-depth detail on all these steps.

### Standard transaction reports

This is the window you will see:

Transaction report

Type of report

Report

Each invoice grouped by name  
Each invoice grouped by date  
Each invoice line by item  
Invoice line with donor  
Each invoice showing profit  
Each invoice line grouped by item department then item  
Each invoice line grouped by name  
Each invoice line grouped by item and then name  
Each invoice sorted by Name.Address1 field then by name  
Each invoice sorted by Name.Address2 field then by name  
Totals for each item category  
Totals for each item  
Totals for each item - net inventory adjustment  
Totals for each item - net inventory adjustment - by store  
Totals for each name

Date range

Confirmed Date

Shipping Date

From 26/07/2024 To 26/07/2024 Today

☐ Exclude transfers from calculations

☐ Include nw or sg status transaction

Transaction type

Sales to customers

Both normal transactions and stock transfers

Transaction category filter

Transaction source All

Transaction category

Master transaction category

Description equals

Name filter

Name contains

and Category 1 is

and Category 2 is

and Customer group is Don't Care

Item filter...

Search by item/s is not applicable for this report.

Prescriber filter

Code equals

Save Template

Cancel

OK

Type of report

Choose from several formats for displaying transaction information by:

1. selecting the report type in the Report list on the left, and
2. choosing the required radio button under *Transaction type*

The following table lists the available report names, and gives brief details of the information provided by each report .

Report name	What it does	Sample
Each invoice grouped by name	The report will sort each invoice in the date range according to the name (Supplier or Customer) and give totals for each name.	<a href="#">Sample</a>
Each invoice grouped by date	As above, but totals given for each day.	<a href="#">Sample</a>
Each invoice line by item	Lists each batch supplied or received, and the transactions for that item. This report can be very long	<a href="#">Sample</a>
Invoice line with donor	As above, but including the 'donor' field and formatted to be most useful for analysis using Excel filtering and Pivot Tables. This report can be long.	
Each invoice showing profit	The cost and selling price totals for each invoice are displayed.	<a href="#">Sample</a>
Each invoice line grouped by item department then item	The invoice lines are grouped by item department assigned to each item. Each item department is then sorted in alphabetical order. Includes batch information.	<a href="#">Sample</a>
Each invoice line grouped by name	The value of batches received/supplied from/to each name. Includes batch level information.	<a href="#">Sample</a>
Each invoice line grouped by item and then name	Invoice lines are all displayed, grouped by item and then, within those groups, by name. Includes batch information.	<a href="#">Sample</a>
Totals for each item category	The total value for each category will be displayed - each transaction will not be shown.	<a href="#">Sample</a>

Report name	What it does	Sample
Totals for each item	Each item that has been received (or issued) will be shown with the total quantity and value received/issued	<a href="#">Sample</a>
Totals for each item - Net Inventory adjustment	Each item on which an inventory adjustment has been made is shown; the net adjustment is displayed, with both quantity and value shown.	<a href="#">Sample</a>
Totals for each name	The invoice lines for the chosen date range are grouped together for each name. This report allows you to see quickly what has been issued to a customer or customers.	<a href="#">Sample</a>
Totals for each item broken down by name	Lists all items, showing their distribution to recipient customers or delivering suppliers	<a href="#">Sample</a>
Totals for each item dept broken down by item		<a href="#">Sample</a>
Totals for each name broken down by item	As above, but listing customers or suppliers and items received by or delivered by them	<a href="#">Sample</a>
Totals for each item department	The total value supplied/received for each item department is shown	<a href="#">Sample</a>
Totals for each item grouped by day	The total quantity and value of each item is shown for each day.	<a href="#">Sample</a>
Totals for each item grouped by month.	The total quantity and value of each item is shown for each month.	<a href="#">Sample</a>
Totals for each item grouped by item description.	First the report is sorted by item then the total quantity and price of each item is shown. It also provides a grand total for the item quantity and price columns.	<a href="#">Sample</a>
2 period comparison by item category	User selects two periods, and the transactions for each period form a column. The rows are determined by the item category. This is a special report that has different input options. See entry below.	
Totals for each item broken down by packsize	The packsize for each item and the number of packs issued.	<a href="#">Sample</a>
Prescription and general issues over time	This report shows the quantity of items given to patients and other customers over a period of time, separated by month. It exports to Excel only and has 2 tabs; the <i>By Item</i> tab shows which prescribers prescribed what items and the <i>By Customer</i> tab shows which items were issued to which customers	<a href="#">Sample</a>
Prescriber report	This report allows you to view the total value, mean item value and item count for prescriptions dispensed for each prescriber	<a href="#">Sample</a>
Dispensing with patient name and prescriber	This report shows who dispensed what to which patients with which directions	<a href="#">Sample</a>

Report name	What it does	Sample
Historic prices - Volume weight average price	<p>This report produces a <a href="#">volume weighted average price</a> for all transactions within the specified time period, for items that are <a href="#">On the price list</a> in the store that you are logged in to.</p> <p>Transactions that have no transactions or a Cost price of 0 are ignored.</p> <p>Calculations are done on the basis of the Catalogue pack size (often be the same as the <a href="#">Preferred pack size</a>). That is, transactions that are not in the Catalogue pack size will have their calculation adjusted accordingly.</p>	
Cross tab: items in rows, names in columns, quantity in cells	These reports are like Excel pivot tables. Warning: they can be slow to produce if you have a lot of data. Start with small date ranges until you are comfortable your machine can handle the load. Note that reports that produce a lot of columns won't print well - it is better to export them to a spreadsheet and print from there.	<a href="#">Sample</a>
Cross tab: items in rows, names in columns, value in cells	See above	<a href="#">Sample</a>
Cross tab: items in rows, days in columns, quantity in cells	See above	<a href="#">Sample</a>
Cross tab: items in rows, days in columns, value in cells	See above	<a href="#">Sample</a>
Cross tab: items in rows, months in columns, quantity in cells	See above	<a href="#">Sample</a>
Cross tab: items in rows, months in columns, value in cells	See above	<a href="#">Sample</a>
Cross tab: names in rows, months in columns, quantity in cells	See above	<a href="#">Sample</a>
Cross tab: names in rows, months in columns, value in cells	See above	<a href="#">Sample</a>
Distribution of quantities issued	First the report is grouped by item name and then by the pack size issued. It displays the total quantity and total count for each item.	<a href="#">Sample</a>
Totals for each item grouped by transaction category then item	The report is grouped by each item's transaction category first and then by each item. The report shows the total count, total quantity and total value for each item. Lastly it also calculates a grand total of the items count, quantity and value columns.	<a href="#">Sample</a>

Report name	What it does	Sample
Each invoice sorted by Name >Address1 field then by name	The invoices are firstly sorted by the address1 field, and then by the name they were supplied to. This groups invoices together by whatever you entered in the "Address1" field for each name - e.g. you might enter the region or province.	<a href="#">Sample</a>
Each invoice sorted byName >Address2 field then by name	As above, but the first sort is by the entry in "Address2" field.	<a href="#">Sample</a>
Customer ordered shortfall report	Where there has been a shortfall, this report shows the shortfall of each item and of each item category by quantity and percentage. It shows what demand from customers has been met and what has not. It applies only for issues to customers.	<a href="#">Sample</a>
Customer transaction report 1	This report and the following three are, in fact, templates, and are the starting point for designing reports on specific criteria not covered in any of the existing reports.	<a href="#">Sample</a>
Customer transaction report 2		<a href="#">Sample</a>
Customer trans line report 1		<a href="#">Sample</a>
Customer trans line report 2		<a href="#">Sample</a>
Received vs. sent	Shows the difference between stock issues from a supplier and stock receipts for the same lines at the customer. If you choose <i>Purchases from suppliers</i> as the <b>Transaction type</b> then the report will run over supplier invoices and show differences between what the current store was sent from the supplying store (on customer invoices) and what the current store received on the corresponding supplier invoices. If you choose <i>Sales to customers</i> as the <b>Transaction type</b> then the report will run over customer invoices and show differences between what was sent from the current store (on customer invoices) and what was received on the corresponding supplier invoices in the receiving store. <b>WARNING:</b> any non stock-transfer transactions included in the report (if you select <i>Normal transactions</i> or <i>Both normal transactions and stock transfers</i> in the <b>Transaction type</b> section) will show a full difference because there is no corresponding customer or supplier invoice. So it is recommended to only choose the <i>Stock transfers</i> option in the <b>Transaction type</b> section for this report.	<a href="#">received_v_sent.pdf</a>
Months to expiry		<a href="#">Sample</a>
Order processing time	If you are filling out the order written date and order received date for incoming customer orders, then this report will show you how long it is taking for orders to reach the store, and how long it is taking to process orders from receipt to order entry and to order dispatch	

Report name	What it does	Sample
Historic prices - Volume weighted average price	<p>Calculates the <b>Volume weighted average</b> price for all items in the catalogue in those stores (i.e. where the item's <b>On price list</b> checkbox is ticked (see the <a href="#">4.01.03. Items - Misc(ellaneous) tab</a> page for details)) for all confirmed or finalised supplier invoices within dates provided by the user for all selected stores. Please note:</p> <ul style="list-style-type: none"> <li>* Transactions where the stock has a cost price = 0 will not be included in the calculation.</li> <li>* Items that have had no transactions within the selected period will not appear in the report.</li> <li>* The <b>On price list</b> checkbox must be set for each store. This will be important if you're running the report over more than one store.</li> </ul>	

## Transaction type

In the first drop down list, you can choose to report on:

- **Sales to customers:** customer invoices i.e. transactions of type *ci*
- **Sales to and credits from customers:** customer invoices & customer credits i.e *ci* and *cc* transaction types
- **Purchases from suppliers:** supplier invoices i.e. transactions of type *si*
- **Purchases from and credits to suppliers:** supplier invoices & supplier credits i.e. *si* and *sc* transaction types
- **Inventory adjustment - Add stock:** All inventory adjustment transactions that resulted in stock additions (e.g. when you did a stock take of an item and counted more on the shelf than the total shown in mSupply).
- **Inventory adjustment - Reduce stock:** All inventory adjustment transactions that resulted in stock reductions (e.g. discarding stock due to it being expired). Note that using a report that shows the total for each transaction category can give totals for expired/damaged etc.
- **Inventory adjustment - Net movement:** Taking into account both reductions and additions, the nett change in inventory due to adjustment transactions.
- **Customer invoice cancellations:** These are the “inverse” invoices created when a customer invoice is cancelled
- **Credits to customers:** The credits applied to customers when invoices are cancelled or when goods are returned.
- **Payment cancellations:** The “inverse” payments created to reverse a payment made by a customer for a customer invoice that has a payment against it and has been cancelled.

In the second drop down list, you have the following options:

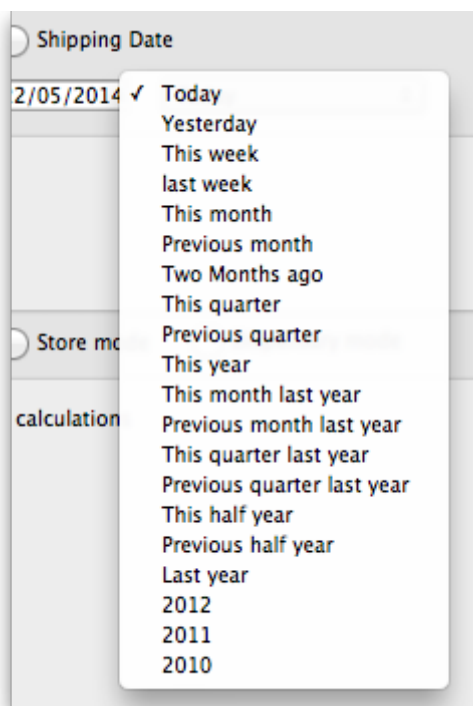
- **Both normal transactions and stock transfers:** this is the default option and means that both stock transfer and non-stock transfer transactions will be included in the report
- **Normal transactions:** all transactions that are **not** stock transfers will be included in the report
- **Stock transfers:** only stock transfers will be included in the report

A stock transfer is a transaction made when the supplier or customer is another store in your datafile. A normal transaction is when the customer or supplier is a normal customer or supplier in your datafile, and not a store.

## Date range

Enter the date range of transactions to report on, having selected *Confirmed date* or *Shipping date*. Note that the date used may differ from the original entry date, depending on how your system is configured in the Preferences.

- Note the popup menu to the right of the date entry fields that allows you to choose quickly from a list of common date ranges:



- Note that “last year” refers to the year preceding the current year (that is, if the current year is 2012, choosing “last year” will set the dates from 1st Jan 2011 to 31st Dec 2011).

## Transaction category filter

Assuming you have set up transaction categories, your report may be filtered by category. For help setting up Transaction categories click see section [22.07. Transaction categories](#).

- Transaction source: Options are “All”, “Customers, Suppliers and Stores” or “Patients”. This allows you to select the type of Name the transactions must belong to. If you select *Patients*, only transactions which have a name that is a patient will be included in the results (e.g. prescriptions). If you select *Customers, Suppliers and Stores* then transactions that have a name which is a normal supplier (e.g. supplier invoice) or customer (e.g. customer invoice) or store (e.g. stock transfer) will be included in the report. If you select All then this filter is effectively not used and transactions with any name type are included in the report.
- Transaction category: Use the magnifying glass to choose the transactions categories to be included in the report. Note that you can select more than one category. The types of categories offered in the list will match your selection in the Transaction type section.
- Master transaction category: If you prefer, you can choose to filter by master transaction category instead. Master transaction categories are used to group together transaction categories (so selecting one of these is like selecting multiple categories in the Transaction

category filter - it's just more convenient to do it this way if you regularly need to choose several. We love to make things easier for you!). Again, see [22.07. Transaction categories](#) for details on setting them up.

## Name filter

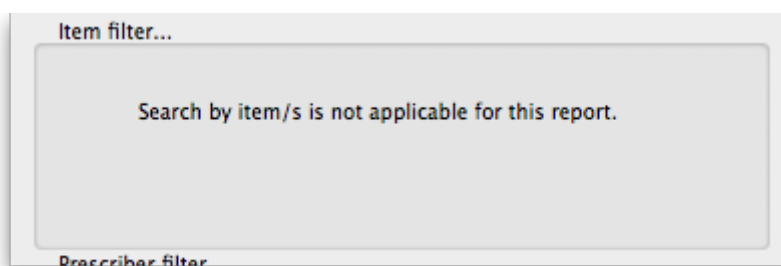
You can enter a particular customer code or category of transactions to be displayed.

- You can choose from either *equals* for an exact match or *starts with* to search for all names whose code or category starts with the entered text.
- Each name has 6 different categories that can be used to group certain kinds of names together. You can filter on category 1 (which is hierarchical) using the *Category 1* filter in the screenshot at the top of the page (note that the *Category 1* text will be replaced with any name you have assigned to this category in the preferences) and one of the other categories using the *Category 2* filter shown in the screenshot at the top of the page.
- If you want to report on transactions for a single name, you can find their code by looking up their details using *Supplier > Show suppliers* or *Customer > Show customers*.
- There is also a *Customer group* filter you can use to include names based on their customer group.

## Item filter

Here you can specify the items to include in the report.

Note that sometimes the item choice options will be hidden because the chosen report is reporting on transactions, not on transaction lines:



## Donor filter

If you have donor tracking turned on in the preferences, and choose a report that bases it's data on invoice lines, then you will be given the option to filter the report for a particular donor or group of donors.

## Which mode?

If you are using mSupply in both store and dispensary mode, you might want to report only on transactions in store mode (items distributed to customers) or in dispensary mode (items distributed to patients). You can do this by checking *Store mode* or *Dispensary mode* radio button depending on

your requirements.

### **Exclude transfers from calculations**

This checkbox enables you to choose whether you include [stock transfers](#) (where stock is transferred from one store to another in mSupply) in the report calculations. If you want stock transfers to be included in your report then uncheck this checkbox. If you want stock transfers to be left out of the report then check this checkbox.

### **Include nw or sg status transactions**

By default only confirmed ('cn') or finalised ('fn') status transactions (i.e. those that have affected stock) will be included in transaction reports. If you want to also include new ('nw') or suggested ('sg') status transactions in your report (i.e. those that have not affected stock yet) then check the **Include nw or sg status transactions** checkbox.

### **The 2 period comparison by item category report**

This report allows you quickly to compare sales or purchases for 2 periods of your choice based on item categories.

When you choose this report a different set of options is shown.

Transaction report...

Type of report

Report

Totals for each name

Totals for each item broken down by name

Totals for each name broken down by item

Totals for each item department

Totals for each item grouped by day

Totals for each item grouped by month

Totals for each item grouped by item description

Totals for each item broken down by packsize

2 Period comparison by item category

Prescriber report

Cross-tab: items in rows, names in columns, quantity in cells

Cross-tab: items in rows, names in columns, value in cells

Cross-tab: items in rows, days in columns, quantity in cells

Cross-tab: items in rows, days in columns, value in cells

Cross-tab: items in rows, months in columns, quantity in cells

Cross-tab: items in rows, months in columns, value in cells

Date range

Confirmed Date

Shipping Date

From 27/2/12 To 27/2/12 Today

Date range for second column

From 01/01/11 To 31/12/11 Last year

Which mode?

Both modes

Store mode

Dispensary mode

Exclude transfers from calculations

Exclude Ad hoc and non stock items

Exclude hidden items

Transaction type

Sales to customers

Sales to and credits from customers

Purchases from suppliers

Purchases from and credits to suppliers

Inventory adjustment - Add stock

Inventory adjustment - Reduce stock

Inventory adjustment - Net movement

Transaction filter

Code equals

Name filter

Name code equals

and Category

Prescriber filter

Code equals

Summary level

None

Summary levels require that you have set up categories using dot notation. Read the mSupply user guide for more information

Open report in Excel

Cancel

OK

Set the date range for each of the columns and then choose a summary level. It should be noted that if no data is present for the first period defined, this report will not run.

Dot notation and summary levels

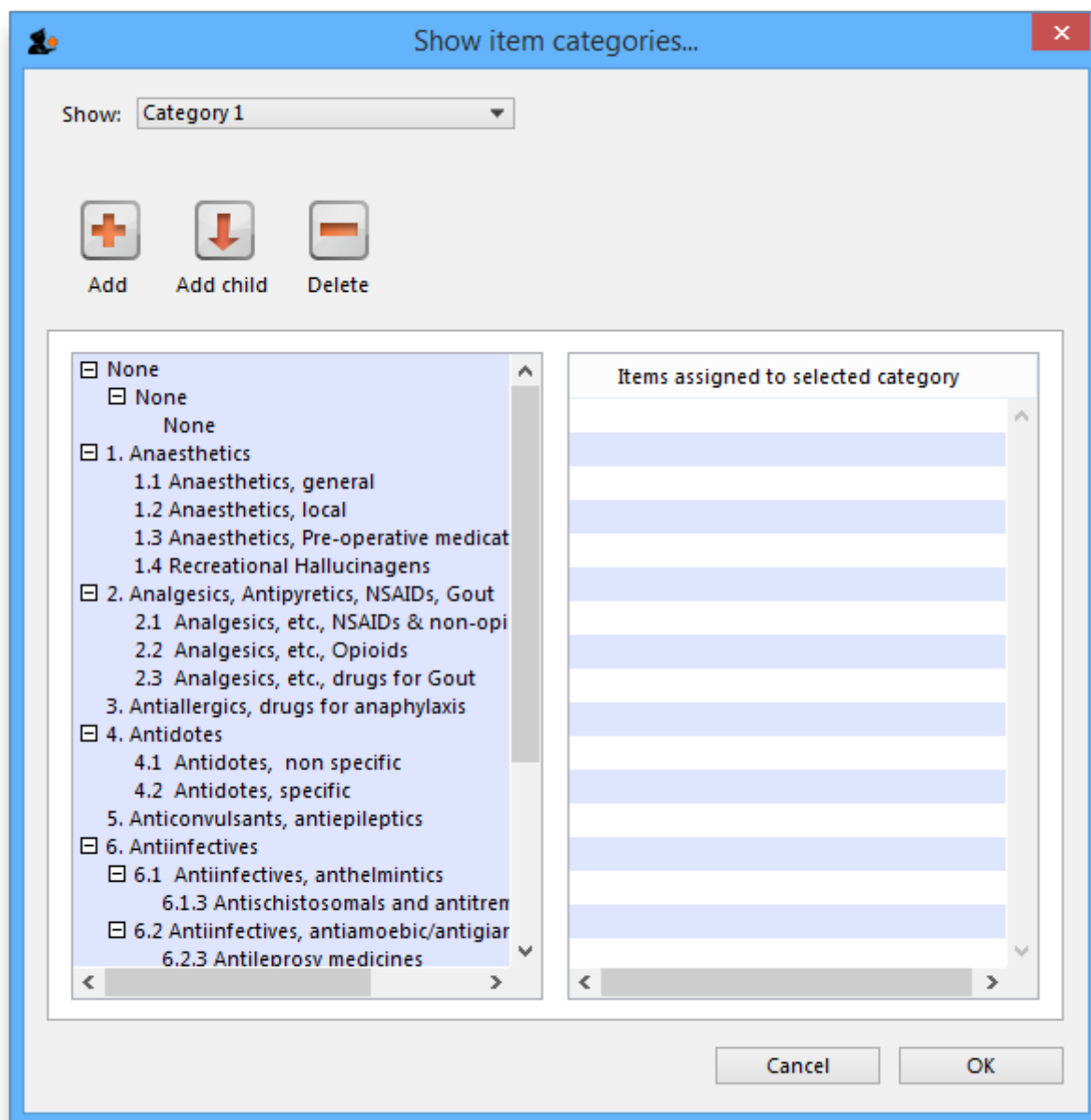
The summary level is based on the item category field. If you have set up item categories using dot notation, then you can summarise categories.

To set up item categories, choose **Items > Show item categories**

Take the following simple example of categories that have been set up as follows:

<https://docs.msupply.org.nz/>

Printed on 2025/06/07 11:31



The rules for dot notation are

- Separate each level of your hierarchy with a period (dot).
- Within a level you can have as many characters as you like
- You can use any characters, as long as you don't use a period or a space within one level; e.g. "surgical.gloves.small" is a valid entry. (Level one is "surgical", level two is "gloves" etc.).
- When the hierarchy part of the category name is finished enter a space character. You can then enter a description for that level of the hierarchy.

If we run the report with a summary level of "none" each category is shown

Comparative Transaction Report The secret pharmaceutical store		
Category	From 01/10/2005 to 28/12/2005	From 01/07/2005 to 30/09/2005
None	1,094,625.43	244,286.00
1 antibiotics	0.00	0.00
1.1 Penicillins	0.00	0.00
1.1.1 Broad spectrum penicillins	1,289.90	8,579.24
1.2 Tetracyclines	41.00	107.08
2 Antidiabetics2	0.00	0.00
2.1 Insulins	8,645.00	34,665.00
2.2 Oral Hypoglycaemics	466.40	1,848.00
3 surgical	0.00	0.00

If we run the same report with level one chosen, only the first level of the hierarchy is shown. Items with categories 1.1 and 1.2 and 1.1.1 have all been summarised under “1 Antibiotics”

Comparative Transaction Report The secret pharmaceutical store		
Category	From 01/10/2005 to 28/12/2005	From 01/07/2005 to 30/09/2005
None	1,094,625.43	244,286.00
1 antibiotics	1,330.90	8,686.32
2 Antidiabetics2	9,111.40	36,513.00
3 surgical	0.00	0.00

And with level two chosen, items with category 1.1.1 and 1.1.2 are summarised under the heading “1.1 Penicillins”

Comparative Transaction Report The secret pharmaceutical store		
Category	From 01/10/2005 to 28/12/2005	From 01/07/2005 to 30/09/2005
None	1,094,625.43	244,286.00
1.1 Penicillins	1,289.90	8,579.24
1.2 Tetracyclines	41.00	107.08
2.1 Insulins	8,645.00	34,665.00
2.2 Oral Hypoglycaemics	466.40	1,848.00

Note that if you have items to which no category has been assigned, they are shown under the heading “none” at the top of the report.

The categories are printed in the order that you have specified by drag-and-dropping in the window shown by choosing **Item > Show item categories....**

**Transaction filter:** Filters the report for given category

**Prescriber filter:** Reduces the found transactions to those for the given prescriber only, depending upon the selection made (equals, starts with, contains, is not equal to).

- Obviously only useful in dispensary mode.

**Exclude transfers from calculations:** The check-box *Exclude transfers from calculations* when checked will ignore transfers between stores within the organisation.

**Exclude Ad Hoc and non stock items:** The check-box *Exclude Ad hoc and non stock items* is displayed according to the type of report selected. By default, it is checked.

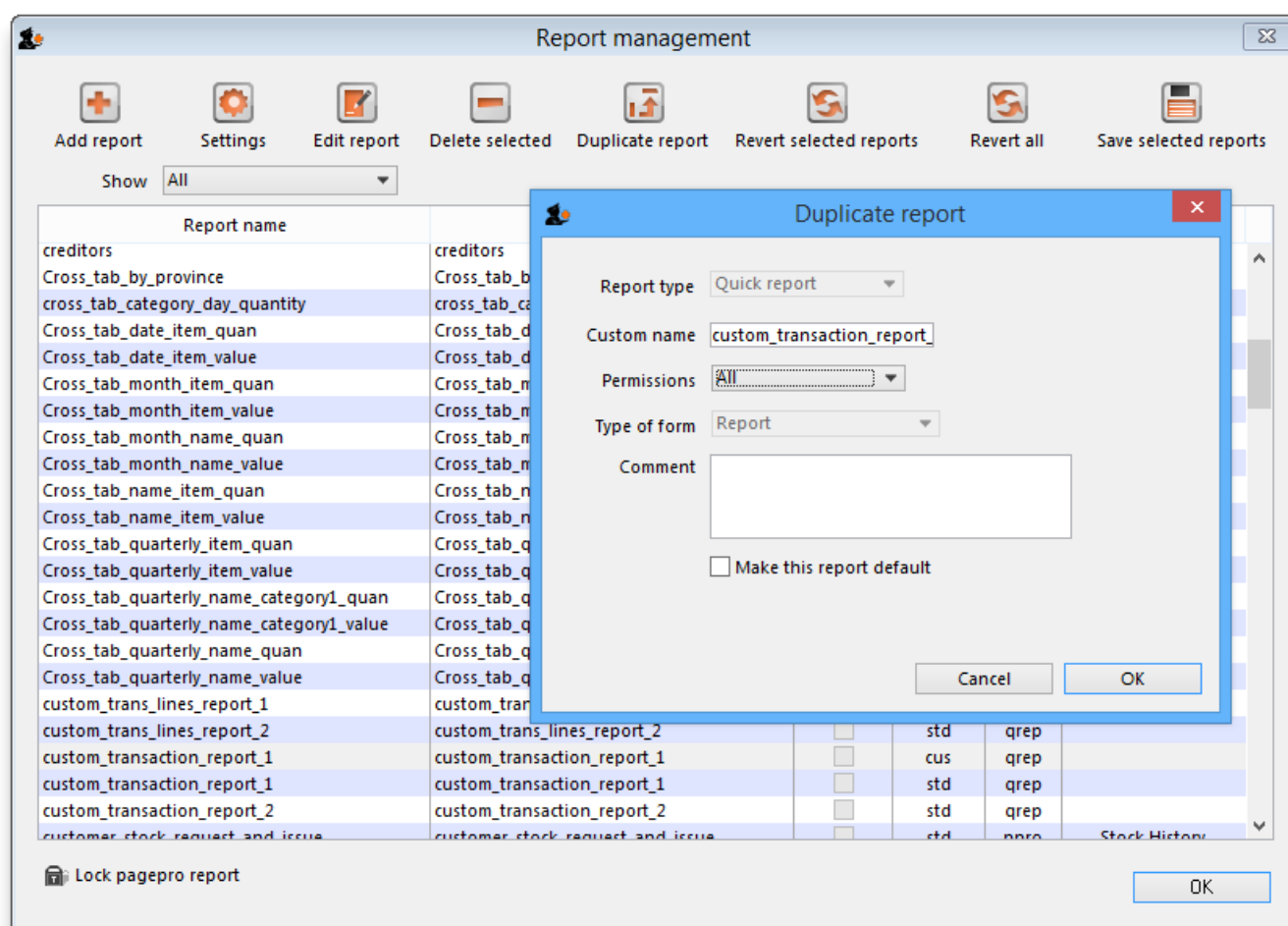
When checked, the transaction report generated will not include any Ad Hoc items or non stock items (items you don't normally keep in stock).

## Custom transaction and trans lines reports

These four reports should be regarded as templates for you to design your own report .

Having decided whether you wish to report on transactions or transaction lines, you need to design the report according to your specific needs. Choose *Reports > Manage Reports* :

You are presented with the *Report management* window. In this example, our report will be on transactions, so you should highlight *custom\_transaction\_report\_1* , and click on the *Duplicate report* button:



Choose an appropriate name for your report, and any comment you wish, and click **OK**. You are returned to the *Report management* window, where you should scroll down until you reach the report

you have created; note that the name you gave the report will appear in the *Custom name* column; highlight the row and click *Edit report* .

Report management

Add report

Settings

Edit report

Delete selected

Duplicate report

Revert selected reports

Revert all

Save selected reports

Show 

All

Report name	Custom name	Default	Type	Editor	Context
custom_trans_lines_report_2	custom_trans_lines_report_2	<input type="checkbox"/>	std	qrep	
custom_transaction_report_1	custom_transaction_report_1	<input type="checkbox"/>	cus	qrep	
custom_transaction_report_1	custom_transaction_report_1	<input type="checkbox"/>	cus	qrep	
custom_transaction_report_1	custom_transaction_report_1	<input checked="" type="checkbox"/>	std	qrep	
custom_transaction_report_2	custom_transaction_report_2	<input type="checkbox"/>	std	qrep	
customer_stock_request_and_issue	customer_stock_request_and_issue	<input type="checkbox"/>	std	ppro	Stock History

This brings up the **Edit report** window. Creating custom reports is described in detail earlier in this chapter. See the [Custom Reporting Tutorial](#)

Save template button

The save template button allows you to save a given report as a template once you have input your chosen settings. Templates can be reused as needed.

Pressing the Save Template button brings up the following window:

Transaction report...

Create report

Manage reports

Type of report

Transaction type

Transaction category filter

Item filter...

Report

Sales to customers

Transaction category

Description

Search by item/s is not applicable for this report.

Save Template

Report name

Report Template

Comment

View preferences

Edit preferences

Public

Public

Cancel

OK

From 3/11/17

To 3/11/17

Today

Save Template

Cancel

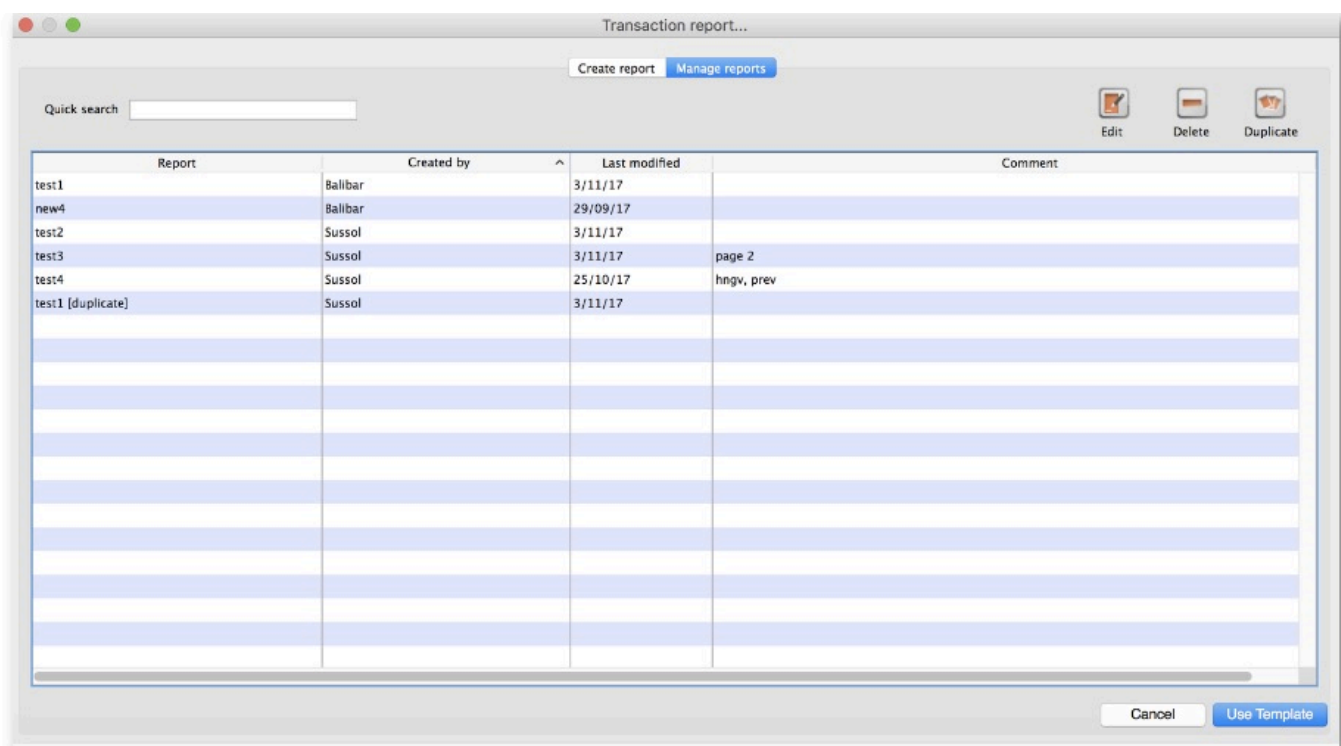
OK

This dialog allows you to set a name and description for the report template. You can also define user permissions: at the moment, you can define these as 'Public' - for anyone, or 'Private', in which case the permissions only apply to the user who created the template.

<https://docs.msupply.org.nz/>

Printed on 2025/06/07 11:31

- View Preferences: define which stores will be able to view and use the template on the 'Manage Reports' tab (next screenshot).
- Edit Preferences: define which stores will be able to edit or delete templates on the 'Manage Reports' tab.



- Displays all template reports that the user has permissions to view.
- Allows user to use the template:
  - Redirects user to 'Create Report' tab
  - Settings here will be set according to the preferences of the template report
- Users can also edit, delete, and duplicate the reports if user permissions allow.
  - Duplicated reports will be named 'ReportName[duplicate]'
- Quick search searches in all text columns of the table.

## Pivot table friendly transaction report

There is an almost infinite range of reports that you might want to generate from transaction data. If you are comfortable using [Excel Pivot tables](#), there is an mSupply transaction report format that you will likely find quite useful. This report has been designed to work in [Supervisor Mode](#) but will also work in a single store.

To generate it:

1. click on Reports > Transaction
2. After configuring the various date range, Item, Name, transaction type, etc. filters
3. Select the **Each Invoice Line by Item** report in the top left

4. Then, select CustomTransactionByItem report type and send the output to **Open in Excel**

The report will open in Excel in a form that can then be easily filtered, sorted and manipulated through a Pivot table. In fact, the records are not sorted at all, so they must be processed to make any sense!

Previous: [13.02. Stock and items reports](#) | | Next: [13.04. Purchasing reports](#)

From:  
<https://docs.msupply.org.nz/> - mSupply documentation wiki

Permanent link:  
<https://docs.msupply.org.nz/reports:transactions?rev=1722006500>

Last update: **2024/07/26 15:08**



