

9.02. Receiving goods back from a customer

If one of your customers wishes to return goods to you, you can receive them back into your store using a customer credit transaction.

You can create a customer credit manually or it can be created automatically in your store if your customer is a store in mSupply and they create a supplier credit to return the goods to you - refer [Return goods to a supplier](#).

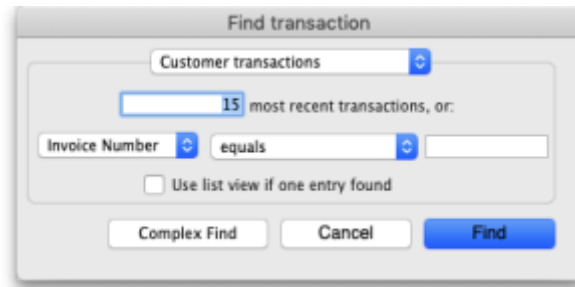
Customer credits created automatically will have status = nw and placed on hold so that they do not affect stock in your store. When the goods physically arrive at your store, you can check them over, verify quantities, batches, condition, etc., make any necessary adjustments to the customer credit before taking it off hold and receiving the returned goods in to stock in mSupply.

Viewing and editing customer credits

Choose *Customer > Show invoices...* from the menu or click on the Show customer invoices icon on the Customers tab of the navigator:



This will show you the search filter window:



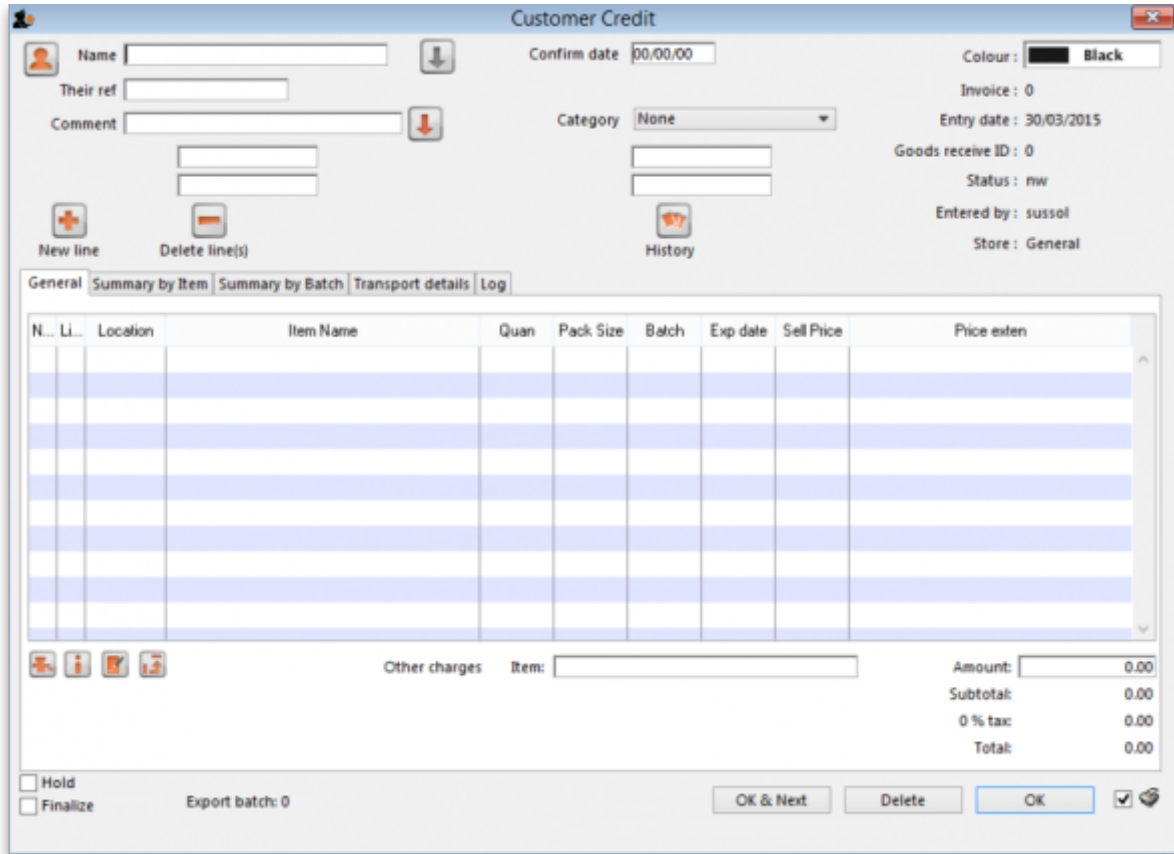
Note that the drop down list at the top is set to Customer transactions. Edit the other filter selections as required (leave the top drop down list as it is) and click on the OK button to see a list of all customer transactions (invoices, credits etc.). The customer credits are the ones with “cc” in the Type column:

Types	Name	Type	St...	Entered	Confirmed	Invmam	Total	Their ref	Picking pri...	Comment	Exper...
Customer invoices	Test store 02	cc	cn	13/0..020	13/0..020	2	-6				0
Supplier invoices	Test store 01	ci	fn	13/0..020	13/0..020	1	63.6				0
Inventory adjustments											
Supplier credits											
Customer credits											
Balids											
Repacks											
Find...											
By date											
By status											
My transactions											
My custom filters											

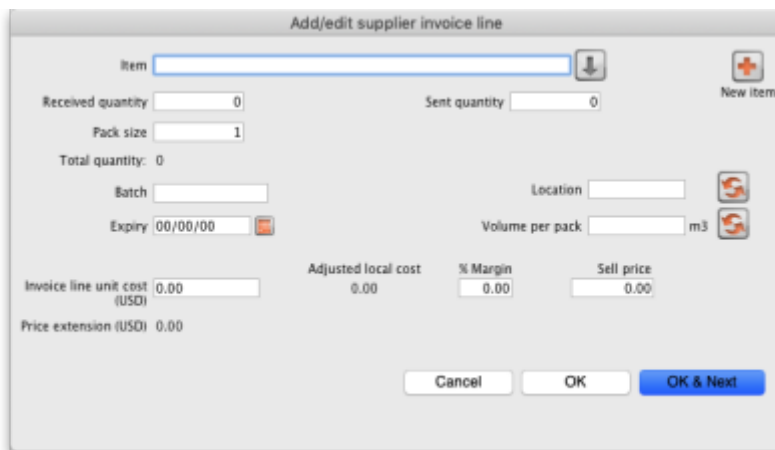
Double click on any transaction in the list to view or edit it.

Creating customer credits

Choose **Customer > New credit...** from the menu bar or click on the *New credit...* icon on the Customer tab of the navigator to open this window:



Enter the name of the customer you are receiving the goods from in the *Name* field by typing the first few characters of the name and pressing the Tab key on the keyboard to select it. Enter a reference and comment in the *Their ref* and *Comment* fields if required then click on the *New line* button to add a line to the credit:



Here you can enter the details of the first batch you are receiving. This is exactly the same as filling out the details for a supplier invoice line. Enter the name of the item first by typing the first few characters of the name or code then press the tab key to select the right item. Now enter the rest of the details as required, to match the stock being returned.

Note that on the customer credit you should enter items with zero margin. This is because *mSupply* uses the cost price entered to calculate the amount to credit the customer, so you must enter the amount you charged them as the cost price for each line. Presumably you want to sell the item again for the same price you sold it originally, hence the cost and selling price should be the same.

When you have finished entering this line's details, click on the **OK** button if you're finished or the **OK & Next** button to add another line. When you've finished adding lines you'll be back at the customer credit window:

Notes	Line	Location	Item code	Item Name	Quan	Pack Size	Batch	Exp date	Sell Price	Price exten
	1		PAR500T	Paracetamol 500mg Tablet	15	100	DFGH567	31/08/2021	2.00	-30.00
	2		AMOS00T	Amoxicillin 500mg Capsule	200	1	RTYU890	30/09/2022	1.40	-280.00

Click on the **OK** button to save the customer credit. This will automatically confirm it and put the items on it into your stock in mSupply.



There is no need to enter negative values for quantities or prices in mSupply. Even when you are entering returned goods from customers, or returning goods to suppliers, enter positive values. mSupply automatically converts the amounts to negative values as required to keep all the figures in correct balance.

Previous: [9.01. Return goods to a supplier](#) | | Next: [10. Dispensing goods](#)

From:

<https://docs.msupply.org.nz/> - **mSupply documentation wiki**

Permanent link:

https://docs.msupply.org.nz/returning_goods:receiving_from_customer?rev=1596670012



Last update: **2020/08/05 23:26**