

## 12.02. Ordering Process with Supplier Hub

The complete ordering process for the supplier hub is summarised in the diagram below:



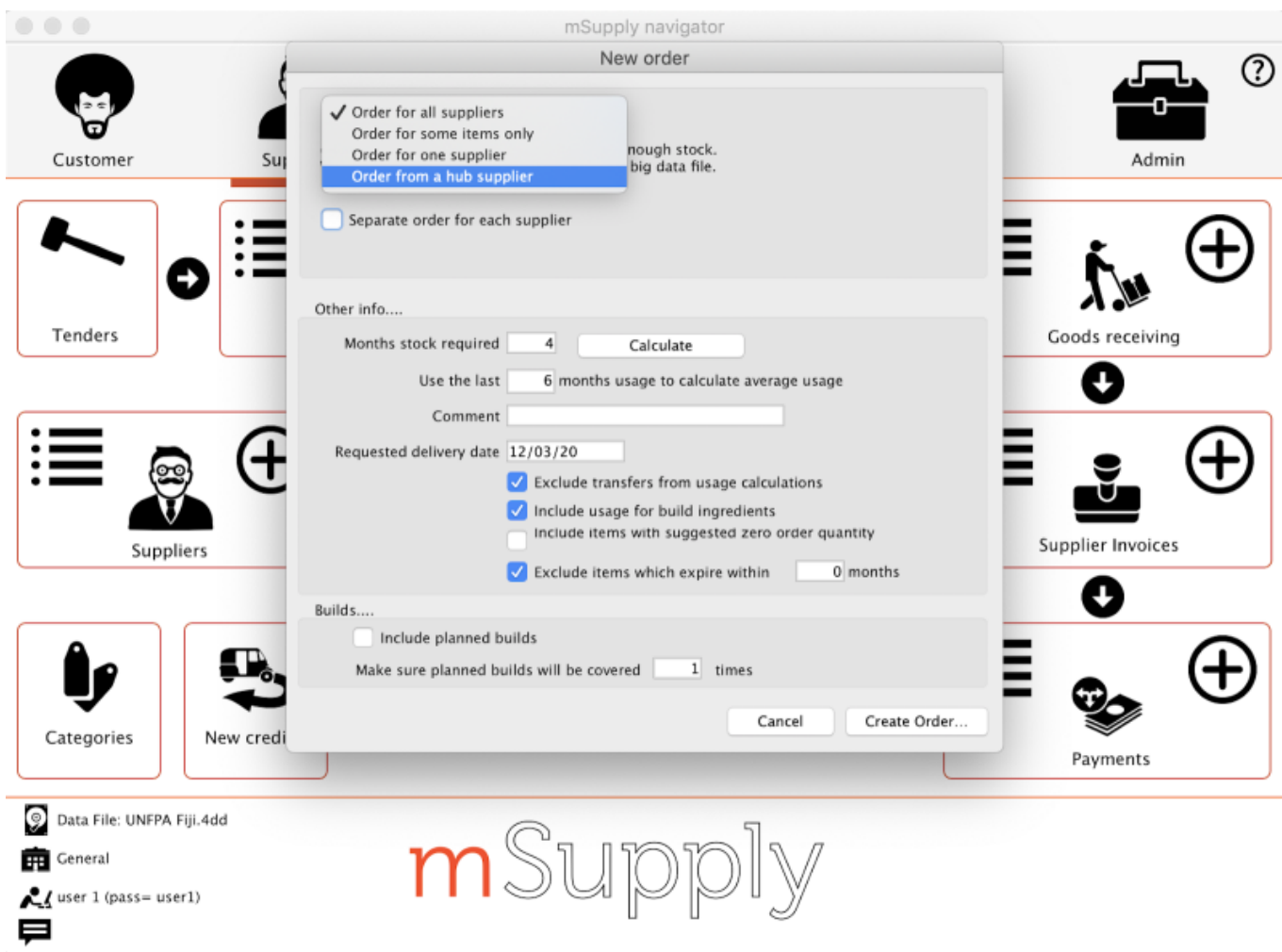
1. The customer creates a purchase order in their mSupply instance (top left in the diagram) which, when confirmed, is sent to the Supplier Hub.
2. The Supplier hub sends this as a customer requisition to the supplier's mSupply instance.
3. The supplier creates a customer invoice from the customer requisition; this determines the stock that is sent to the customer.
4. Once finalised, the customer invoice is sent to the Supplier hub as an Advance Shipping Notification (ASN).
5. The customer receives this as a Goods Received note in their mSupply instance.
6. The Goods Received note can be edited to correctly reflect the stock received in the customer's store.
7. Once finalised, the Goods Received note information is updated on the customer's original purchase order and sent to the Supplier Hub. It then updates the customer invoice originally created in the supplier's mSupply instance to show the quantity, batches and date of reception of the stock received.

## Ordering from a Supplier Hub site

You order from a supplier hub site by sending them a purchase order. You can create the purchase order either manually or using mSupply's "calculate it for me" functionality. You can see full details about that on the [6.01. Ordering stock from suppliers](#) page.

When manually creating a purchase order, if the supplier you choose is a supplier hub site then it automatically becomes an order that is handled through the Supplier hub.

When creating a calculated order, you tell mSupply to use a Supplier Hub supplier - click on the *Calculated* icon on the *Suppliers* tab of the Navigator then select the *Order from a hub supplier* option in the top drop down list:



- Click 'Calculated' on the Supplier tab to create a new calculated purchase order.
- Choose 'Order from a hub supplier' in the drop down list.
- This will then allow you to search from the supplier hub suppliers
- Once chosen, it will create a purchase order for the items in the Supplier Hub Catalog for that supplier (See Supplier Hub Config - Setting up Catalogs for how these catalogs are defined).
- The purchase order must be confirmed for the order to be sent to the supplier hub.

**New order**

Order from a hub supplier

Supplier

This will calculate an order for all items on the supplier's local list.

Other info....

Months stock required

Use the last  months usage to calculate average usage

Comment

Requested delivery date

- Exclude transfers from usage calculations
- Include usage for build ingredients
- Include items with suggested zero order quantity
- Exclude items which expire within  months

Builds....

- Include planned builds

Make sure planned builds will be covered  times

Previous: [12.01. Configuring the mSupply Link](#) || Next: [12.03. Supplying a mSupply Link site](#)

From:  
<https://docs.msupply.org.nz/> - **mSupply documentation wiki**

Permanent link:  
[https://docs.msupply.org.nz/supplier\\_hub:ordering?rev=1645016215](https://docs.msupply.org.nz/supplier_hub:ordering?rev=1645016215)

Last update: **2022/02/16 12:56**

