

3.01. The tutorial like no other



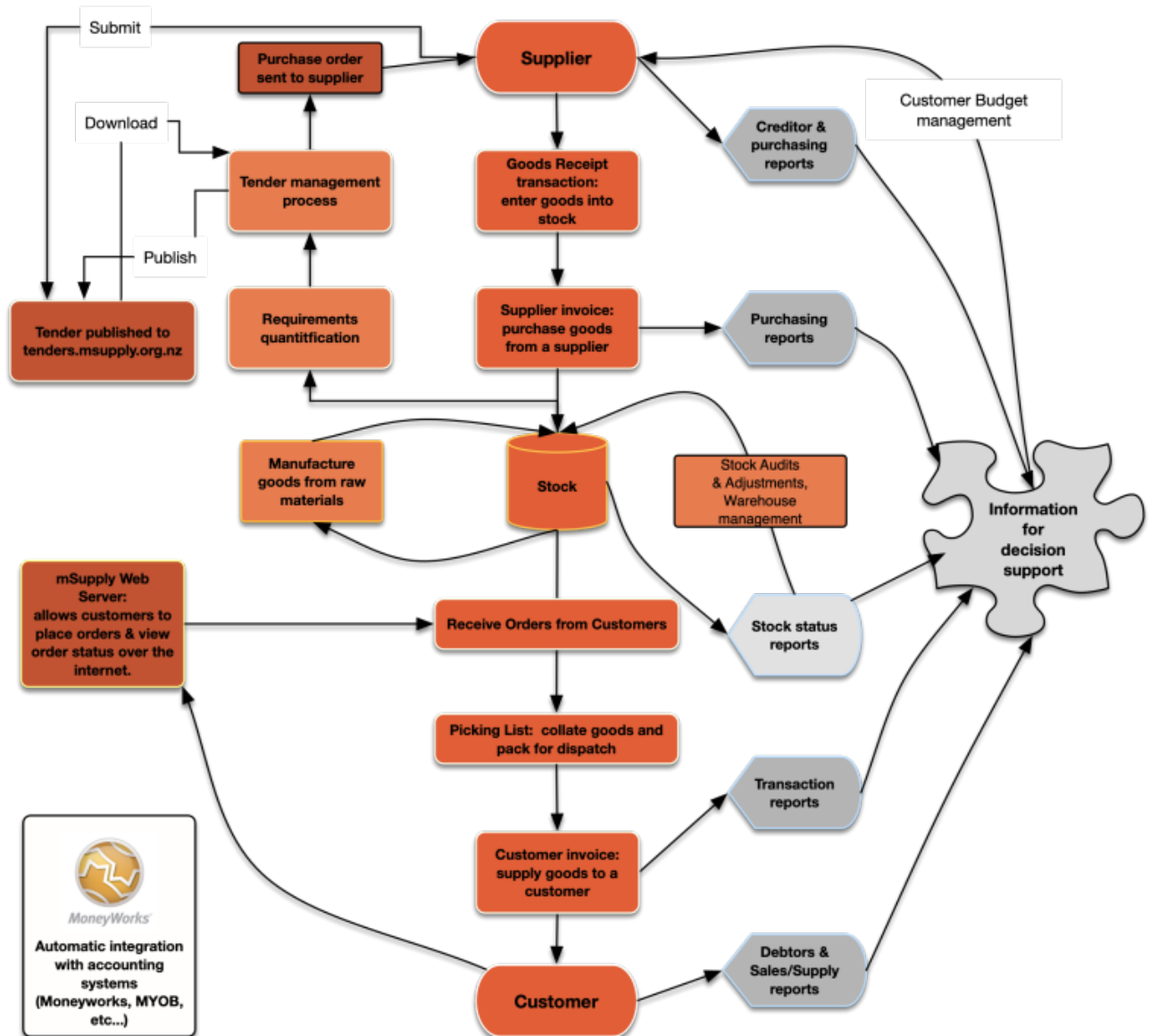
For a dictionary of terms please refer to section **1.05. Terms, definitions and conventions used in this user guide**

Only mSupply®'s basic features are covered in the Tutorial; its many enhanced features are covered in depth in appropriate sections of the User Guide.

mSupply explained

This chart shows the common steps in most pharmaceutical supply processes. (Of course, the manufacturing step only applies to manufacturers!)

mSupply work flow diagram



Of course, there is much more to it than that, but these two transactions are the core of the system.

<https://docs.msupply.org.nz/>

correctly.

Before starting the tutorial, you will need to have installed mSupply®, and opened the example database. If you haven't done so, see section [2.02. Installation](#).



mSupply® runs best with a screen resolution of 1024 or 768 or greater. If you have your screen set to 950 x 850 or lower, some windows will not fit on the screen. To change screen resolution:

- Windows: Right click anywhere on the desktop, select **Properties > Settings** , and make the necessary changes.
- Macintosh: Choose **Apple > System Preferences...** then click on the **Displays** icon and set a new resolution

Previous: [3. Tutorial](#) | | Next: [3.02. Logging in](#)

From:

<https://docs.msupply.org.nz/> - mSupply documentation wiki

Permanent link:

https://docs.msupply.org.nz/tutorial:full_tutorial?rev=1578900481

Last update: **2020/01/13 07:28**

