

18.06. Mobile Dashboard set up (after v4.0)



August 2020: The instructions on this page are for configuring mSupply's legacy web dashboard and [mSupply Mobile dashboards](#). mSupply's legacy web dashboard has been superseded by the [mSupply Grafana web dashboard](#).



The following instruction are for setting up dashboards for mSupply versions 4.0 and later. For mSupply versions earlier than v4.0, the dashboard setup is accessed and configured via the mSupply Preferences menu, refer to [Dashboard set up \(prior to mSupply v4.0\)](#).

Before you set the dashboard up you must:



- know what ports are already in use on the server
- have an appropriate [SSL Certificate](#) set up.
- make sure your [webserver](#) is currently running.

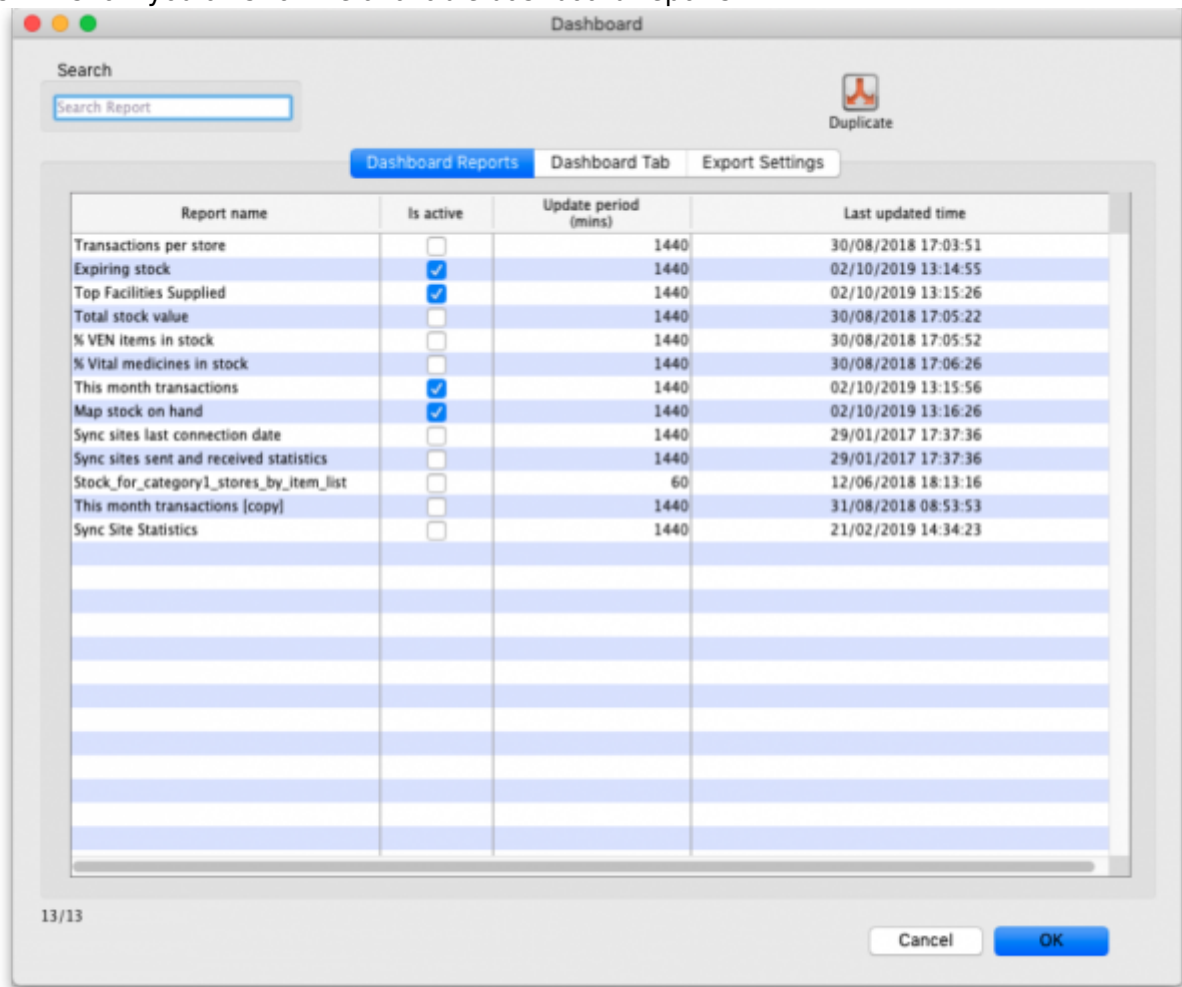
Sustainable Solutions can help with these.

Configure the dashboards

1. On the **Admin** tab of the Navigator click on the **Dashboard** button:



2. This will show you a list of the available dashboard reports:



- 3. Tick the box in the **Is active** column for each report that you want generated.
- 4. Set the number of minutes in the **Update Period (mins)** column to set how often each of

these reports is generated. 1440 is one full day.

Available dashboard reports

There are several built-in dashboard reports that everyone can use. The table below documents what they show and what properties can be edited:



If you would like help with adding one of these reports to your list, contact Sustainable Solutions on support@msupply.org.nz

Report	Method	Format	Parameters			
Expiring items for Store Shows a list of items, for a given store, which will expire within a specified number of months. v4.01	<i>dashboardReportExpiringItemList</i>	Table, Bar chart	monthsToInclude	The number of months before expiry that the report includes (defaults to 3 if this parameter is missing)		
			storeCode	search for a single store matching this code		
			dataElement	Looks for the dataElement in the aggregator table. If blank, will default to AMC		
			customisation	allows for a client customisation: currently supports MAM.		
			ven_category	V, E, N or E, N or V, E ..etc will filter for the respective VEN values. If blank, no filtering by VEN value		
			chartType	bar, table. If blank, will default to table		
Report		Method		Format	Parameters	
Expiring Stock Shows a graph of total value of stock expiring grouped by the number of months in which the stock will expire.		<i>dashboard_rep_expiring_stock</i>		Bar chart	None	

Report	Method	Format	Parameters	
Items issued this month Shows a list of items, per store, which were issued in the last 30 days. Uses store tag and master list to select items to be displayed.	dashboard_itemRow_storeCol_usag	Table	store_tag	Identifies stores to display. Multiple stores can be selected by separating them by comma or space e.g. "bacau,CHC" or "bacau CHC"
			master_list	Show items which are included in this master list
			period	Number of days from the current date to look back
Report	Method	Format	Parameters	
Map stock on hand Shows a map of the area specified, with an "X" if the facility is out of stock of the item, or a dot representing the amount of stock on hand.	dashboard_map_stock_on_hand	Map	country	Name of country - compulsory but not shown
			item_code	the code of the item to display
			lat_nw_corner	the latitude of the North-West corner of the map
			long_nw_corner	the longitude of the North-West corner of the map
			lat_se_corner	the latitude of the South-East corner of the map
			long_se_corner	the longitude of the South-East corner of the map
			store_tags	A comma separated list of tags - or omit this parameter if you want to show stock for all stores
Report		Method	Format	Parameters
Monthly transactions Shows a bar chart of the number of purchase orders, goods receipts, supplier and customer invoices created this month.		dashboard_rep_month_transacs	Bar or Line chart	None

Report	Method	Format	Parameters	
Stock_for_category1_stores_by_item_list Shows a table of items in rows and stores in columns, with the stock on hand for that item in that store in each cell.	<i>dashboard_rep_stk_StoreCols_Itm</i>	Table	store_code	code or codes of stores to show. to specify multiple stores enter multiple store_code params (append @ for a "starts with" search)
			master_list	VHP - All Items Will search for items that are part of the master list : "VHP - All Items"
			item_code	items whose code matches this code (append @ for a "starts with" search)
			Category1_description	private Will search for names whose name category 1 is "private"

Report	Method	Format	Parameters	
Store Transaction Count Shows a count of each store's transactions for the past 7 and 30 days	<i>dashboard_rep_count_store_trans</i>	Line or Bar chart	store_tags	matches stores with this tag

Report	Method	Format	Parameters	
Sync sites last connection date	<i>dashboard_report_last_sync_date</i>	Table	None	

Report	Method	Format	Parameters	
Sync sites sent and received statistics	<i>dashboard_report_sync_stat</i>	Table	None	

Report	Method	Format	Parameters	
Sync sites statistics Shows a range of statistics related to synchronisation v4.02+	dashboardSyncSiteStatistics	table	storeTag	(default = %) - report will select stores where tags match % {storeTag} and sync_id_remote_site > 1
			syncDayThreshold	(default = 5) - color cell red when days since last sync > syncDayThreshold
			unfinalisedSIThreshold	(default = 0) - color cell red when number of unfinalised supplier invoices > unfinalisedSIThreshold
			stocktakeDayThreshold	(default = 30) - color cell red when days since last stocktake > stocktakeDayThreshold
			requisitionDayThreshold	(default = 30) - color cell red when days since last requisition > requisitionDayThreshold
			lookBackPeriod	(default = 50) - Look back number of days for Supplier Invoice, Stocktake and Requisitions
			lookBackPeriodCI	(default = 30) - Look back number of days for Customer Invoice
			daysWithCIThreshold	(default = 0.2) - color cell red where 'days with customer invoice' divided by `number of working days` < daysWithCIThreshold

Report	Method	Format	Parameters	
This month's transactions Shows a bar chart of the number of purchase orders, goods receipts, supplier and customer invoices created this month.	dashboard_rep_month_transacs	Bar chart	store_name	If provided the report shows details for the given store, otherwise the default store is used

Report	Method	Format	Parameters	
Top facilities supplied The 10 customers in your store to which you have sent the greatest value of stock. Shows the value of stock for each customer.	dashboard_rep_top_facilities	Bar chart	None	

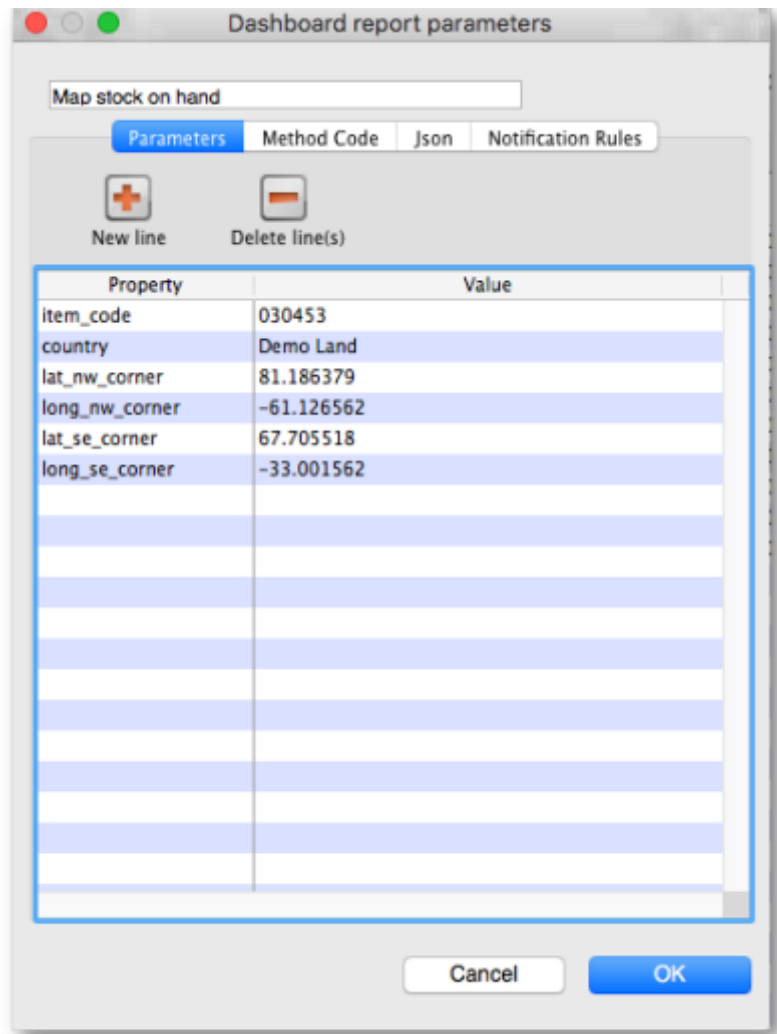
Report	Method	Format	Parameters
Total stock value A single figure in your default currency, showing the total value of the stock you have in the store you are viewing the dashboard for.	<i>dashboard_rep_total_stock_value</i>	h2	None
Report	Method	Format	Parameters
Transactions per store Shows a table of the transactions per stores within 30 days	<i>dashboard_rep_month_transacs</i>	Table	store_code Specify a store by entering a store code, or leave blank for the default store
Report	Method	Format	Parameters
Trends in critical stock	<i>dashboard_rep_in_stock_trends</i>	Time series chart	store_id the ID of the store you're interested in, or no value for all stores
			critical_stock TRUE if you want to include items with this field checked, false for all items
Report	Method	Format	Parameters
Unfinalised Stock transfers Shows unfinalised stock transfers within the specified time period for each facility which matches the "store_tags" parameter. If no store tags are passed in, transactions are shown for all stores.	<i>dashboardReportUnfinalisedStock</i>	Table	store_tags Queries only stores with matching store tags
			days_older_than Queries transactions that were created 'x' number of days ago
Report	Method	Format	Parameters
VEN items in stock Shows stock on hand of each items that belongs to the VEN (Vital, Essential, Necessary) category	<i>dashboard_rep_item_ven</i>	Line or bar chart	store_code store code - if empty then default store is chosen
			ven_category V,E,N or E,N or V,N ..etc will filter the VEN items. If blank all visible items for the store are chosen

Report	Method	Format	Parameters	
Vital items in stock Shows a bar graph of the percentage of medicines of the chosen category in stock at each facility	dashboard_store_stock_percent	Bar chart	ven_category	v or e or n if you want to include items that are Vital or Essential or Necessary
			user_field_4	TRUE if you want to include items with this field checked
			user_field_7	TRUE if you want to include items with this field checked Note that the labels for fields 4 and 7 may be different, as they are set up in the mSupply preferences (misc tab)
			critical_stock	TRUE if you want to include items with this field checked, false for all items
			store_tags	entering healthcentre will only include stores with the "healthcentre" tag
Report	Method	Format	Parameters	
Item Stock on Hand and Months Cover Shows a table of item VEN status, Stock on Hand, Monthly Consumption, and Months Cover	dashboard_rep_stock_on_hand	Table	store_code	search for a single store matching this code
			lookBack_months	how many months of data to review when calculating; defaults to 6
			ven_category	V,E,N or E , N or V , N ..etc will filter the VEN items. If blank all visible items for the store are chosen. If not supplied the filter is not used; specify 'blank' to show items with empty ven. Note: each category in combination must be separated by comma, example: either v,e,n or v,e or v,n
			item_code	Searches for items matching this code
			customisation	Allows for a client customisation: currently supports MAM.

If you can't make a dashboard report that does what you want then please speak to us, it's usually a fairly simple matter for us to create one for you.

Editing dashboard reports

Double-click a report in the list shown above and the following window will open:



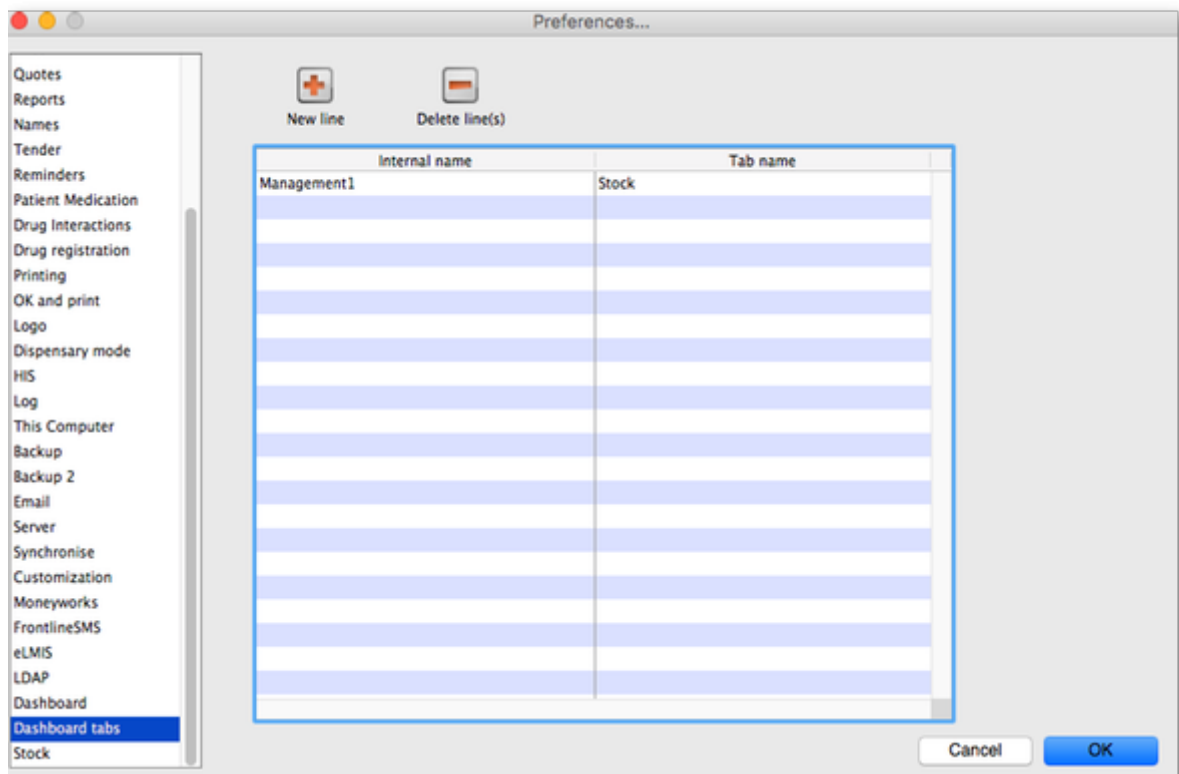
- If there are any properties shown in the list, these can be edited to change what is displayed.
- To edit a property or value, click once to select the row, and then click again in the appropriate cell to edit it.
- To add or delete a row use the **New line** and **Delete line(s)** buttons at the top of the window.
- In the example shown in the screenshot above (a map report), the coordinates of two of the map corners and the item code of the item whose stocks will be shown on the map have been entered. Note that if you add extra properties to the default reports they'll be ignored.



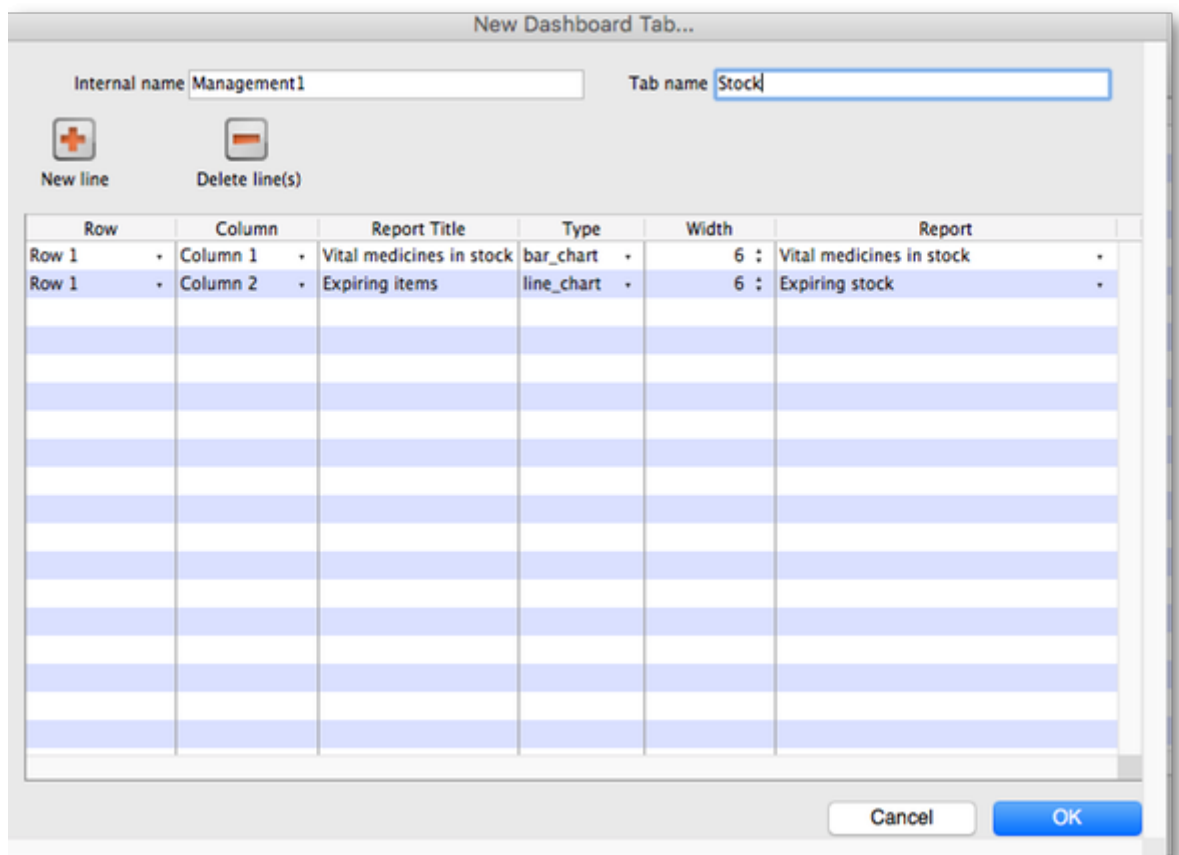
August 2020: The remaining instructions on this page are for configuring mSupply's legacy web dashboard. This may still work, but is no longer supported as it has been superseded by the [mSupply Grafana web dashboard](#). The instructions are left here for historic reference only.

Dashboard tabs

You set up Dashboard tabs which will display on your dashboard. Dashboard tabs are “containers” for one or more dashboard reports. To edit them go to *File > Preferences* and click on the *Dashboard tabs* tab on the left hand side:



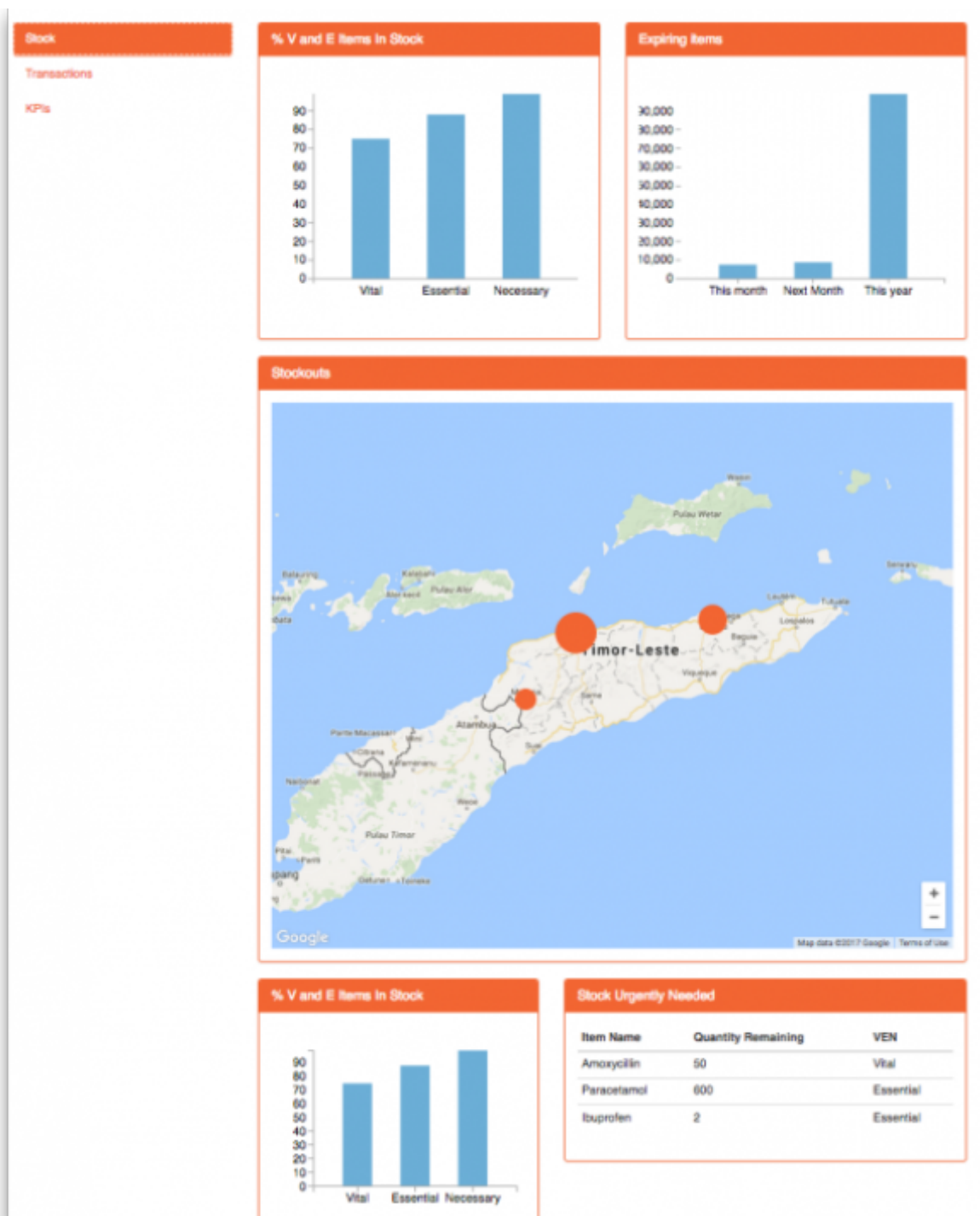
To add a tab click the **Add** button. To edit a tab, double-click it. You will be shown a window for editing a dashboard tab:



Now you add reports that will show on this tab.

Understanding rows and columns

Take this example dashboard tab:



- The tabs themselves occupy their own space on the left of the window- they aren't considered when laying out the dashboard
- The first row has two reports- each report takes up half the row. So for the first report:
 - Row 1, Col 1, width 12 ("12" means it takes up the full width of the cell it is in- "4" would mean it would take up 1/3 of the width)
- For the report at the top right:
 - Row 1, Col 2, width 12
- For the map

- Row 2, Col 1, width 12
- The next two reports are on the same row, but are divided into 5/12 and 7/12 of the width of the window, so we put them in the same cell but change the width settings:
 - Row 3, Col 1, width 5
 - Row 3, Col 1, width 7

Adding a report to a dashboard tab

Click **New Line** to add a new report to the tab. Then edit the values in each column

- **Row:** The row it will be in
- **Column:** The column within the row- set to "1" if you don't have multiple reports on this row.
- **Report title:** The title that will show in the Orange heading bar for the report. Note that the same report can display different information depending on the parameters you set for that report- hence the need for the ability to customise report names
- **Type:** You'll need to know the appropriate type for the report you're displaying. The options are
 - bar_chart
 - table
 - pie_chart
 - time_series
 - map
 - line_chart
- **Width:** The fraction of the cell width in "twelfths" that this report will take up ("6" will make it take up half the cell width)
- **Report:** Choose the report name from the drop-down list of available reports

Configure users to have access to dashboards

Once the tabs have been setup you have to choose which users will see which tabs. You do this in individual users' settings. For instructions on how to do this, see:

- [Managing users > General tab > Users can:](#) (Use the Dashboard permission)
- [Managing users > Dashboard tab](#)

Previous: [19.05. Web Dashboard](#) | | Next: [19.07. Online catalogue](#)

From:

<https://docs.msupply.org.nz/> - mSupply documentation wiki

Permanent link:

https://docs.msupply.org.nz/web_interface:dashboard_setup?rev=1606362619

Last update: 2020/11/26 03:50

